



[Go to Product page](#)

Datasheet for ABIN560742

anti-ENO2/NSE antibody (AA 325-434)

5 Images

1 Publication

Overview

Quantity:	100 µg
Target:	ENO2/NSE (ENO2)
Binding Specificity:	AA 325-434
Reactivity:	Human
Host:	Mouse
Clonality:	Monoclonal
Conjugate:	This ENO2/NSE antibody is un-conjugated
Application:	Western Blotting (WB), ELISA

Product Details

Purpose:	Mouse monoclonal antibody raised against a partial recombinant ENO2.
Immunogen:	ENO2 (AAH02745, 325 a.a. ~ 434 a.a) partial recombinant protein with GST tag. MW of the GST tag alone is 26 KDa.
Sequence:	PKRIERAVEE KACNCLLLKV NQIGSVTEAI QACKLAQENG WGVMVSHRSG ETEDTFIADL VVGLCTGQIK TGAPCRSERL AKYNQLMRIE EELGDEARFA GHNFRNPSVL
Clone:	1A3
Isotype:	IgG2a
Cross-Reactivity:	Human
Characteristics:	Antibody Reactive Against Recombinant Protein.

Target Details

Target:	ENO2/NSE (ENO2)
Alternative Name:	ENO2 (ENO2 Products)
Background:	Full Gene Name: enolase 2 (gamma, neuronal) Synonyms: NSE
Gene ID:	2026

Application Details

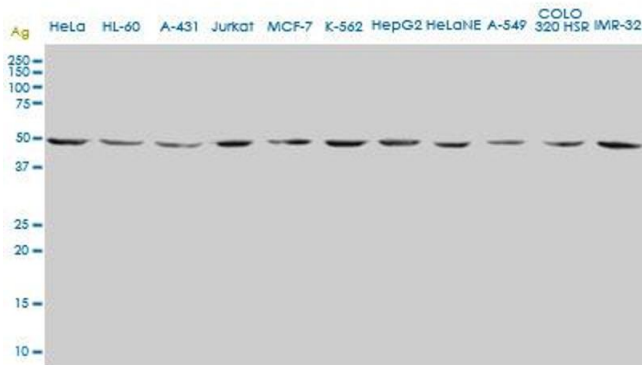
Application Notes:	Optimal working dilution should be determined by the investigator.
Restrictions:	For Research Use only

Handling

Buffer:	In 1x PBS, pH 7.4
Handling Advice:	Aliquot to avoid repeated freezing and thawing.
Storage:	-20 °C
Storage Comment:	Store at -20°C or lower. Aliquot to avoid repeated freezing and thawing.

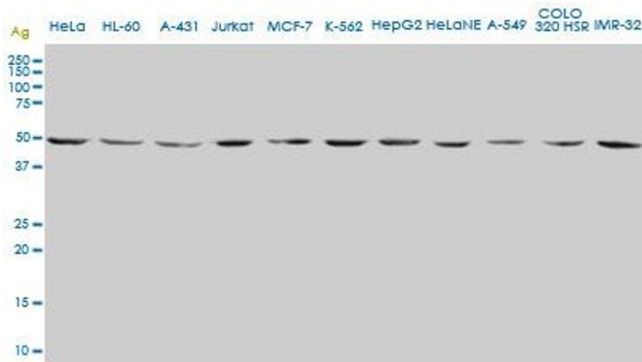
Publications

Product cited in:	Chang, Liu, Hsieh, Hu, Charoenfuprasert, Liu, Luh, Hsu, Wu, Ting, Chen, Chen, Yang, Chou, Wang, Whang-Peng, Shih: "Identification of alpha-enolase as an autoantigen in lung cancer: its overexpression is associated with clinical outcomes." in: Clinical cancer research : an official journal of the American Association for Cancer Research , Vol. 12, Issue 19, pp. 5746-54, (2006) (PubMed).
-------------------	---



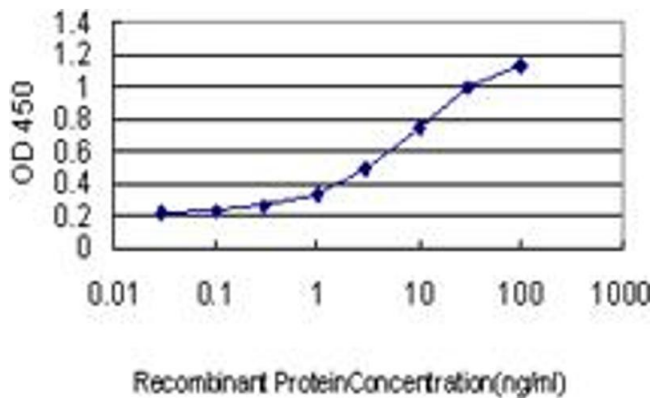
Western Blotting

Image 1. ENO2 monoclonal antibody (M01), clone 1A3. Western Blot analysis of ENO2 expression in HeLa .



Western Blotting

Image 2. ENO2 monoclonal antibody (M01), clone 1A3. Western Blot analysis of ENO2 expression in different cell lines.



ELISA

Image 3. Detection limit for recombinant GST tagged ENO2 is approximately 0.1 ng/ml as a capture antibody.

Please check the [product details page](#) for more images. Overall 5 images are available for ABIN560742.