



[Go to Product page](#)

Datasheet for ABIN560747 **anti-p300 antibody (AA 731-830)**

1 Image

Overview

Quantity:	50 µL
Target:	p300 (EP300)
Binding Specificity:	AA 731-830
Reactivity:	Human
Host:	Mouse
Clonality:	Polyclonal
Conjugate:	This p300 antibody is un-conjugated
Application:	Western Blotting (WB), ELISA

Product Details

Purpose:	Mouse polyclonal antibody raised against a partial recombinant EP300.
Immunogen:	EP300 (NP_001420, 731 a.a. ~ 830 a.a) partial recombinant protein with GST tag.
Sequence:	PPLQHHGQLA QPGALNPPMG YGPRMQPSN QGQFLPQTQF PSQGMNVTNI PLAPSSGQAP VSQAQMSSSS CPVNSPIMPP GSQGSIHCP QLPQPALHQN
Cross-Reactivity:	Human
Characteristics:	Antibody Reactive Against Recombinant Protein.

Target Details

Target:	p300 (EP300)
Alternative Name:	EP300 (EP300 Products)

Target Details

Background: Full Gene Name: E1A binding protein p300
Synonyms: KAT3B,p300

Gene ID: 2033

NCBI Accession: [NM_001429](#)

Pathways: [p53 Signaling](#), [Notch Signaling](#), [Interferon-gamma Pathway](#), [Intracellular Steroid Hormone Receptor Signaling Pathway](#), [Regulation of Intracellular Steroid Hormone Receptor Signaling](#), [Regulation of Lipid Metabolism by PPARalpha](#), [Regulation of Muscle Cell Differentiation](#), [Regulation of Cell Size](#)

Application Details

Application Notes: Optimal working dilution should be determined by the investigator.

Restrictions: For Research Use only

Handling

Format: Liquid

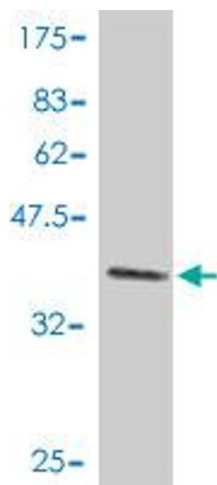
Buffer: 50 % glycerol

Handling Advice: Aliquot to avoid repeated freezing and thawing.

Storage: -20 °C

Storage Comment: Store at -20°C or lower. Aliquot to avoid repeated freezing and thawing.

Images



Western Blotting

Image 1. Western Blot detection against Immunogen (37.11 kDa).