

Datasheet for ABIN560754
anti-EPH Receptor A3 antibody (AA 202-326)



[Go to Product page](#)

5 Images

1 Publication

Overview

Quantity:	100 µg
Target:	EPH Receptor A3 (EPHA3)
Binding Specificity:	AA 202-326
Reactivity:	Human
Host:	Mouse
Clonality:	Monoclonal
Conjugate:	This EPH Receptor A3 antibody is un-conjugated
Application:	Western Blotting (WB), ELISA, RNA Interference (RNAi)

Product Details

Purpose:	Mouse monoclonal antibody raised against a partial recombinant EPHA3.
Immunogen:	EPHA3 (AAH63282, 202 a.a. ~ 326 a.a) partial recombinant protein with GST tag. MW of the GST tag alone is 26 KDa.
Sequence:	CPFTVKNLAM FPDTVPMDSQ SLVEVRGSCV NNSKEEDPPR MYCSTEGEWL VPIGKCSNA GYEERGFMCQ ACRPGFYKAL DGNMKCAKCP PHSSTQEDGS MNCRCENNYF RADKDPPSMA CTRPP
Clone:	3A12
Isotype:	IgG1
Cross-Reactivity:	Human
Characteristics:	Antibody Reactive Against Recombinant Protein.

Target Details

Target:	EPH Receptor A3 (EPHA3)
Alternative Name:	EPHA3 (EPHA3 Products)
Background:	Full Gene Name: EPH receptor A3 Synonyms: ETK,ETK1,HEK,HEK4,TYRO4
Gene ID:	2042
Pathways:	RTK Signaling , Regulation of Cell Size

Application Details

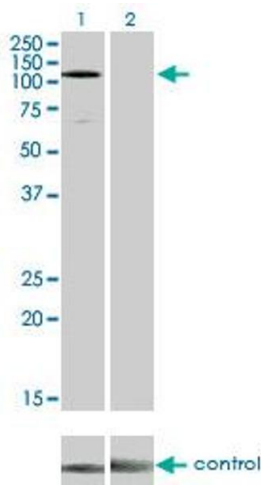
Application Notes:	Optimal working dilution should be determined by the investigator.
Restrictions:	For Research Use only

Handling

Buffer:	In 1x PBS, pH 7.4
Handling Advice:	Aliquot to avoid repeated freezing and thawing.
Storage:	-20 °C
Storage Comment:	Store at -20°C or lower. Aliquot to avoid repeated freezing and thawing.

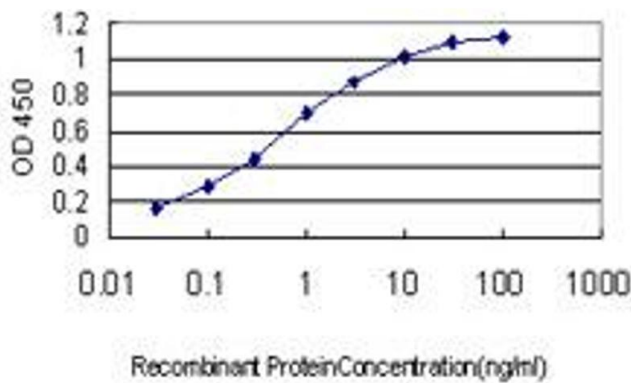
Publications

Product cited in:	Peng, Wang, Liu, Ye, Wu, Guo: "EPHA3 regulates the multidrug resistance of small cell lung cancer via the PI3K/BMX/STAT3 signaling pathway." in: Tumour biology , Vol. 37, Issue 9, pp. 11959-11971, (2016) (PubMed).
-------------------	--



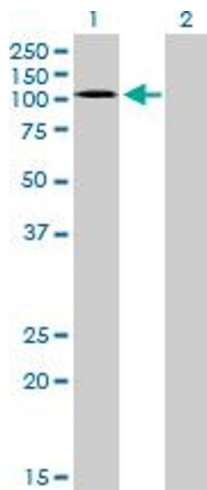
Western Blotting

Image 1. Western blot analysis of EPHA3 over-expressed 293 cell line, cotransfected with EPHA3 Validated Chimera RNAi (Lane 2) or non-transfected control (Lane 1). Blot probed with EPHA3 monoclonal antibody (M01) clone 3A12. GAPDH (36.1 kDa) used as specificity and loading control.



ELISA

Image 2. Detection limit for recombinant GST tagged EPHA3 is approximately 0.03ng/ml as a capture antibody.



Western Blotting

Image 3. Western Blot analysis of EPHA3 expression in transfected 293T cell line by EPHA3 monoclonal antibody (M01), clone 3A12.

Lane 1: EPHA3 transfected lysate(110.1 KDa).

Lane 2: Non-transfected lysate.

Please check the [product details page](#) for more images. Overall 5 images are available for ABIN560754.