



[Go to Product page](#)

Datasheet for ABIN560803
anti-ETV1 antibody (AA 148-257)

4 Images

Overview

Quantity:	100 µg
Target:	ETV1
Binding Specificity:	AA 148-257
Reactivity:	Human
Host:	Mouse
Clonality:	Monoclonal
Conjugate:	This ETV1 antibody is un-conjugated
Application:	Western Blotting (WB), ELISA

Product Details

Purpose:	Mouse monoclonal antibody raised against a partial recombinant ETV1.
Immunogen:	ETV1 (NP_004947, 148 a.a. ~ 257 a.a) partial recombinant protein with GST tag. MW of the GST tag alone is 26 KDa.
Sequence:	LHHASPNSTH TPKPDRAFPA HLPPSQSIPD SSYPMDHRFR RQLSEPCNSF PPLPTMPREG RPMYQRQMSE PNIPFPQGF KQEYHDPVYE HNTMVGSAAS QSFPPPLMIK
Clone:	2A8
Isotype:	IgG1
Cross-Reactivity:	Human
Characteristics:	Antibody Reactive Against Recombinant Protein.

Target Details

Target: ETV1

Alternative Name: ETV1 ([ETV1 Products](#))

Background: Full Gene Name: ets variant 1

Synonyms: DKFZp781L0674,ER81,MGC104699,MGC120533,MGC120534

Gene ID: 2115

NCBI Accession: [NM_004956](#)

Application Details

Application Notes: Optimal working dilution should be determined by the investigator.

Restrictions: For Research Use only

Handling

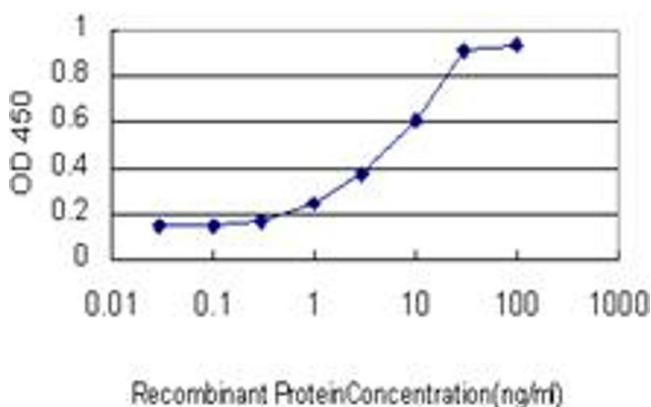
Buffer: In 1x PBS, pH 7.4

Handling Advice: Aliquot to avoid repeated freezing and thawing.

Storage: -20 °C

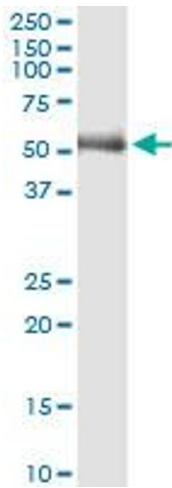
Storage Comment: Store at -20°C or lower. Aliquot to avoid repeated freezing and thawing.

Images



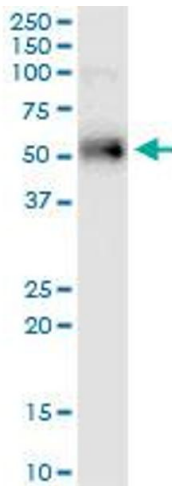
ELISA

Image 1. Detection limit for recombinant GST tagged ETV1 is approximately 1ng/ml as a capture antibody.



Western Blotting

Image 2. ETV1 monoclonal antibody (M01), clone 2A8.
Western Blot analysis of ETV1 expression in human liver.



Western Blotting

Image 3. ETV1 monoclonal antibody (M01), clone 2A8.
Western Blot analysis of ETV1 expression in human pancreas.

Please check the [product details page](#) for more images. Overall 4 images are available for ABIN560803.