

Datasheet for ABIN5608103

**Goat anti-Human Immunoglobulin kappa Chain Complex (Igk)
(Light Chain) Antibody (FITC) - Preadsorbed**[Go to Product page](#)**1** Image

Overview

Quantity:	1 mg
Target:	Igk
Binding Specificity:	Light Chain
Reactivity:	Human
Host:	Goat
Clonality:	Polyclonal
Conjugate:	FITC
Application:	Flow Cytometry (FACS), FLISA, Fluorescence Microscopy (FM)

Product Details

Immunogen:	Immunogen: Human kappa light chain
Isotype:	IgG
Fragment:	F(ab') ₂ fragment
Characteristics:	F(ab') ₂ HUMAN kappa Antibody Fluorescein Conjugated is designed for immunofluorescence microscopy, fluorescence based plate assays (FLISA) and fluorescent western blotting. This product is also suitable for multiplex analysis, including multicolor imaging, utilizing various commercial platforms.
Purification:	Preadsorption: Solid phase absorption
Labeling Ratio:	3.0

Target Details

Target:	Igk
Alternative Name:	kappa (Igk Products)
Background:	<p>Synonyms: Goat F(ab')₂ Anti-Human κ (kappa chain) Antibody Fluorescein Conjugation, Goat F(ab')₂ Anti-Human kappa chain FITC Conjugated Antibody</p> <p>Background: F(ab')₂ HUMAN kappa Antibody Fluorescein Conjugated is designed for immunofluorescence microscopy, fluorescence based plate assays (FLISA) and fluorescent western blotting. This product is also suitable for multiplex analysis, including multicolor imaging, utilizing various commercial platforms.</p>

Application Details

Application Notes:	<p>Application Note: Suitable for immunomicroscopy and flow cytometry or FACS analysis as well as other antibody based fluorescent assays requiring extremely low background levels, absence of F(c) mediated binding, lot-to-lot consistency, high titer and specificity.</p> <p>FLISA Dilution: 1:10,000 - 1:50,000</p> <p>Flow Cytometry Dilution: 1:500 - 1:2,500</p> <p>IF Microscopy Dilution: 1:1,000 - 1:5,000</p>
Restrictions:	For Research Use only

Handling

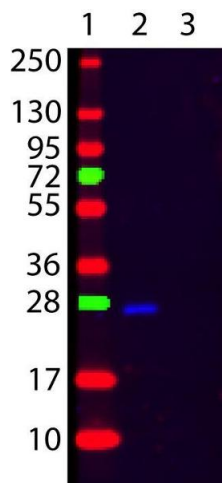
Format:	Lyophilized
Reconstitution:	<p>Reconstitution Volume: 1.0 mL</p> <p>Reconstitution Buffer: Restore with deionized water (or equivalent)</p>
Concentration:	1.0 mg/mL
Buffer:	<p>Buffer: 0.02 M Potassium Phosphate, 0.15 M Sodium Chloride, pH 7.2</p> <p>Stabilizer: 10 mg/mL Bovine Serum Albumin (BSA) - Immunoglobulin and Protease free</p> <p>Preservative: 0.01 % (w/v) Sodium Azide</p>
Preservative:	Sodium azide
Precaution of Use:	This product contains Sodium azide: a POISONOUS AND HAZARDOUS SUBSTANCE which should be handled by trained staff only.
Storage:	RT, 4 °C, -20 °C
Storage Comment:	Store vial at 4° C prior to restoration. For extended storage aliquot contents and freeze at -20° C

Handling

or below. Avoid cycles of freezing and thawing. Centrifuge product if not completely clear after standing at room temperature. This product is stable for several weeks at 4° C as an undiluted liquid. Dilute only prior to immediate use.

Expiry Date: 12 months

Images



Western Blotting

Image 1. Western Blot of Goat F(ab')₂ anti-Human κ (Kappa chain) Fluorescein Conjugated Secondary Antibody. Lane 1: Human λ. Lane 2: Human κ. Load: 50 ng per lane. Primary antibody: None. Secondary antibody: Fluorescein goat secondary antibody at 1:1,000 for 60 min at RT. Block: ABIN925618 for 30 min at RT. Predicted/Observed size: 25 kDa, 25 kDa for Human κ. Other band(s): None