



Datasheet for ABIN5608130

Goat anti-Human lambda Antibody (HRP) - Preadsorbed



[Go to Product page](#)

1 Image

Overview

Quantity:	1 mg
Target:	lambda
Reactivity:	Human
Host:	Goat
Clonality:	Polyclonal
Conjugate:	HRP
Application:	ELISA, Immunohistochemistry (IHC), Western Blotting (WB)

Product Details

Immunogen:	Immunogen: Human lambda light chain
Isotype:	IgG
Fragment:	Fab fragment
Purification:	Preadsorption: Solid phase absorption

Target Details

Target:	lambda
Alternative Name:	lambda)

Application Details

Application Notes:	Immunohistochemistry Dilution: 1:500 - 1:2,500
--------------------	--

Application Details

Western Blot Dilution: 1:1,000 - 1:5,000

ELISA Dilution: 1:10,000 - 1:50,000

Restrictions: For Research Use only

Handling

Format: Lyophilized

Reconstitution: Reconstitution Volume: 1.0 mL

Reconstitution Buffer: Restore with deionized water (or equivalent)

Concentration: 1.0 mg/mL

Buffer: Buffer: 0.125 M Sodium Borate, 0.075 M Sodium Chloride, 0.005 M EDTA, pH 8.0

Stabilizer: 10 mg/mL Bovine Serum Albumin (BSA) - Immunoglobulin and Protease free

Preservative: Gentamicin sulfate

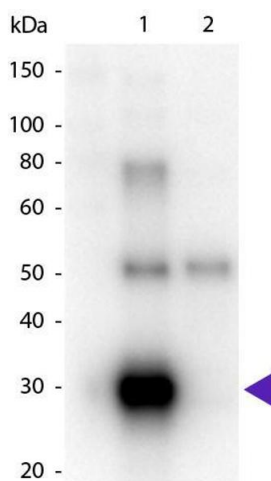
Precaution of Use: This product contains Gentamicin sulfate: a POISONOUS AND HAZARDOUS SUBSTANCE which should be handled by trained staff only.

Storage: 4 °C, -20 °C

Storage Comment: Store vial at 4° C prior to restoration. For extended storage aliquot contents and freeze at -20° C or below. Avoid cycles of freezing and thawing. Centrifuge product if not completely clear after standing at room temperature. This product is stable for several weeks at 4° C as an undiluted liquid. Dilute only prior to immediate use.

Expiry Date: 12 months

Images



Western Blotting

Image 1. Western Blot of Goat anti-Human λ (Lambda chain) Peroxidase Conjugated Secondary Antibody. Lane 1: Human λ . Lane 2: Human κ . Load: 50 ng per lane. Primary antibody: None. Secondary antibody: Peroxidase goat secondary antibody at 1:1,000 for 60 min at RT. Block: ABIN925618 for 30 min at RT. Predicted/Observed size: 28 kDa, 28 kDa for Human λ . Other band(s): Human λ splice variants and isoforms.