

Datasheet for ABIN5608137

Goat anti-Human lambda (Light Chain) Antibody - Preadsorbed[Go to Product page](#)**1** Image

Overview

Quantity:	1 mg
Target:	lambda
Binding Specificity:	Light Chain
Reactivity:	Human
Host:	Goat
Clonality:	Polyclonal
Application:	ELISA, Immunohistochemistry (IHC), Western Blotting (WB)

Product Details

Immunogen:	Immunogen: Anti-Human lambda light chain antibody was produced by repeated immunization with Human lambda light chain molecule in goat. Immunogen Type: Native Protein
Isotype:	IgG
Cross-Reactivity:	Human
Characteristics:	Anti-Human lambda light chain antibody generated in goat detects specifically human lambda light chain . This secondary antibody anti-Human is ideal for investigators who routinely perform ELISA, Sandwich ELISA, titration assays, western-blot, immunoprecipitation and more generally immunoassays.
Purification:	Preadsorption: Solid phase absorption

Target Details

Target:	lambda
Alternative Name:	lambda)
Background:	<p>Synonyms: goat anti-Human λ (lambda chain) Antibody, goat anti-Human lambda chain Antibody</p> <p>Background: The anti-Human λ (lambda chain) Antibody detects the lambda chain subunit. Immunoglobulins are heterotetramers composed of 2 immunoglobulin heavy and 2 immunoglobulin light chains. The immunoglobulin light chain is the small polypeptide subunit of an antibody (immunoglobulin). In humans the light chains can be categorized into kappa type or lambda type and both are used to construct the antigen binding F(ab) region of an antibody along with the variable region of the heavy chain.</p>

Application Details

Application Notes:	<p>Immunohistochemistry Dilution: 1:1,000 - 1:5,000</p> <p>Application Note: This secondary antibody anti-Human is ideal for investigators who routinely perform ELISA, Sandwich ELISA, titration assays, western-blot, immunoprecipitation and more generally immunoassays.</p> <p>ELISA Dilution: 1:4,000 - 1:20,000</p> <p>Western Blot Dilution: 1:500 - 1:2,000</p>
Restrictions:	For Research Use only

Handling

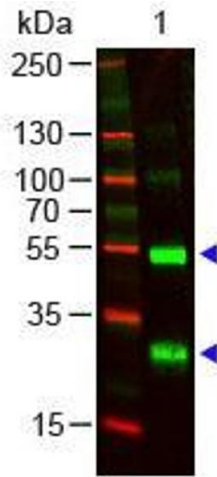
Format:	Liquid
Concentration:	1.0 mg/mL
Buffer:	<p>Buffer: 0.125 M Sodium Borate, 0.075 M Sodium Chloride, 0.005 M EDTA, pH 8.0</p> <p>Stabilizer: None</p> <p>Preservative: 0.1 % (w/v) Sodium Azide</p>
Preservative:	Sodium azide
Precaution of Use:	This product contains Sodium azide: a POISONOUS AND HAZARDOUS SUBSTANCE which should be handled by trained staff only.
Storage:	4 °C,-20 °C
Storage Comment:	Store vial at 4° C prior to opening. This product is stable for several weeks at 4° C as an undiluted liquid. Dilute only prior to immediate use. For extended storage aliquot contents and

Handling

freeze at -20° C or below. Avoid cycles of freezing and thawing.

Expiry Date: 12 months

Images



Western Blotting

Image 1. Western Blot of Goat anti-Human λ (lambda chain) Antibody. Lane 1: Human λ (lambda chain). Lane 2: None. Load: 100 ng per lane. Primary antibody: Human λ (lambda chain) Antibody at 1:1000 for overnight at 4°C. Secondary antibody: DyLight800 Donkey anti-Goat at 1:20,000 for 30 min at RT. Block: ABIN925618 for 30 min at RT. Other Band(s): None.