



Datasheet for ABIN560814  
**anti-EWSR1 antibody (AA 358-453)**



[Go to Product page](#)

2 Images

Overview

Quantity:	50 µL
Target:	EWSR1
Binding Specificity:	AA 358-453
Reactivity:	Human
Host:	Mouse
Clonality:	Polyclonal
Conjugate:	This EWSR1 antibody is un-conjugated
Application:	Western Blotting (WB), ELISA

Product Details

Purpose:	Mouse polyclonal antibody raised against a partial recombinant EWSR1.
Immunogen:	EWSR1 (NP_005234, 358 a.a. ~ 453 a.a) partial recombinant protein with GST tag.
Sequence:	SDNSAIYVQG LNSVTLDDL ADFKQCGVV KMNKRTGQPM IHYLDKETG KPKGDATVSY EDPPTAKAAV EWFDGKDFQG SKLKVSLARK KPPMNS
Cross-Reactivity:	Human
Characteristics:	Antibody Reactive Against Recombinant Protein.

Target Details

Target:	EWSR1
Alternative Name:	EWSR1 ( <a href="#">EWSR1 Products</a> )

## Target Details

Background:	Full Gene Name: Ewing sarcoma breakpoint region 1 Synonyms: EWS
Gene ID:	2130
NCBI Accession:	<a href="#">NM_005243</a>

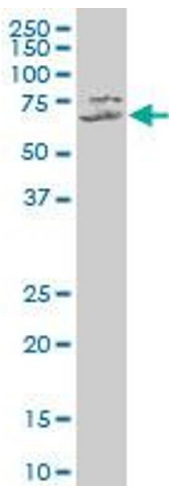
## Application Details

Application Notes:	Optimal working dilution should be determined by the investigator.
Restrictions:	For Research Use only

## Handling

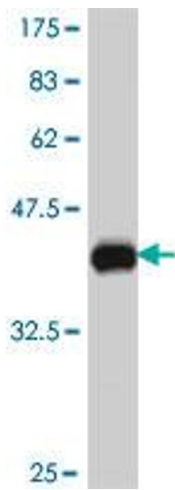
Format:	Liquid
Buffer:	50 % glycerol
Handling Advice:	Aliquot to avoid repeated freezing and thawing.
Storage:	-20 °C
Storage Comment:	Store at -20°C or lower. Aliquot to avoid repeated freezing and thawing.

## Images



### Western Blotting

**Image 1.** EWSR1 polyclonal antibody (A01), Lot # 050921JC01 Western Blot analysis of EWSR1 expression in HeLa .



### Western Blotting

**Image 2.** Western Blot detection against Immunogen (36.67 kDa).