



[Go to Product page](#)

Datasheet for ABIN5608149

Rabbit anti-Mouse IgG Antibody (HRP) - Preadsorbed

1 Image

Overview

Quantity:	100 µg
Target:	IgG
Reactivity:	Mouse
Host:	Rabbit
Clonality:	Polyclonal
Conjugate:	HRP
Application:	ELISA, Immunohistochemistry (IHC), Western Blotting (WB)

Product Details

Immunogen:	Immunogen: Highly purified mouse IgG gamma 1, gamma 2a, gamma 2b and gamma 3 proteins Immunogen Type: Native Protein
Isotype:	IgG
Characteristics:	This Anti-Mouse IgG subclass pan reactive Secondary Antibody is designed for Western Blotting, ELISA and Immunohistochemistry. HRP conjugated secondary antibodies can also be used for a variety of other applications such as Assay Development.
Purification:	Preadsorption: Solid phase absorption

Target Details

Target:	IgG
Abstract:	IgG Products

Target Details

Target Type: Antibody

Background: Synonyms: rabbit anti-Mouse IgG (gamma 1, 2a, 2b and 3 chain) Antibody peroxidase conjugation, rabbit anti-Mouse IgG HRP conjugated Antibody

Background: Anti-Mouse IgG Peroxidase Antibody generated in rabbit detects reactivity to Mouse IgG1, IgG2a, IgG2b and IgG3. Secreted as part of the adaptive immune response by plasma B cells, immunoglobulin G constitutes 75 % of serum immunoglobulins.

Immunoglobulin G binds to viruses, bacteria, as well as fungi and facilitates their destruction or neutralization via agglutination (and thereby immobilizing them), activation of the complement cascade, and opsinization for phagocytosis. The whole IgG molecule possesses both the F(c) region, recognized by high-affinity Fc receptor proteins, as well as the F(ab) region possessing the epitope-recognition site. IgG1, IgG2a, IgG2b and IgG3 chains of the antibody molecule are present. Secondary Antibodies are available in a variety of formats and conjugate types. When choosing a secondary antibody product, consideration must be given to species and immunoglobulin specificity, conjugate type, fragment and chain specificity, level of cross-reactivity, and host-species source and fragment composition.

Application Details

Application Notes: Immunohistochemistry Dilution: 1:1000 - 1:5000

Application Note: This Anti-Mouse IgG subclass pan reactive Secondary Antibody is designed for Western Blotting, ELISA and Immunohistochemistry. HRP conjugated secondary antibodies can also be used for a variety of other applications such as Assay Development. When choosing a secondary antibody product, consideration must be given to species and immunoglobulin specificity, conjugate type, fragment and chain specificity, level of cross-reactivity, and host-species source and fragment.

ELISA Dilution: 1:20,000 - 1:40,000

Western Blot Dilution: 1:2000 - 1:10000

Restrictions: For Research Use only

Handling

Format: Lyophilized

Reconstitution: Reconstitution Volume: 100 µL

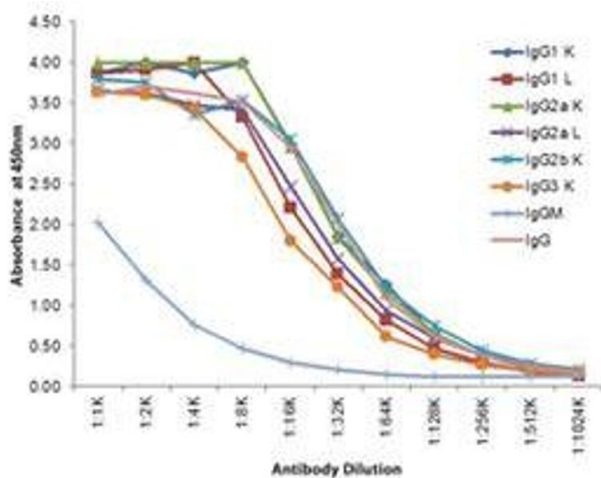
Reconstitution Buffer: Restore with deionized water (or equivalent)

Concentration: 1.0 mg/mL

Handling

Buffer:	Buffer: 0.02 M Potassium Phosphate, 0.15 M Sodium Chloride, pH 7.2 Stabilizer: 10 mg/mL Bovine Serum Albumin (BSA) - Immunoglobulin and Protease free Preservative: 0.01 % (w/v) Gentamicin Sulfate
Preservative:	Gentamicin sulfate
Precaution of Use:	This product contains Gentamicin sulfate: a POISONOUS AND HAZARDOUS SUBSTANCE which should be handled by trained staff only.
Storage:	RT, 4 °C, -20 °C
Storage Comment:	Store vial at 4° C prior to restoration. For extended storage aliquot contents and freeze at -20° C or below. Avoid cycles of freezing and thawing. Centrifuge product if not completely clear after standing at room temperature. This product is stable for several weeks at 4° C as an undiluted liquid. Dilute only prior to immediate use.
Expiry Date:	12 months

Images



ELISA

Image 1. Indirect ELISA of Rabbit Anti-Mouse IgG (gamma 1, 2a, 2b, and 3) antibody. Antigen: purified mouse IgG heavy and light chains. Coating amount: 0.1 µg per well. Primary antibody: Rabbit Anti-Mouse IgG (Gamma 1, 2a, 2b, and 3) HRP conjugated Antibody. Dilution series: 2-fold. Substrate: TMB .