

Datasheet for ABIN560872
anti-FGFR1 antibody (AA 31-150)



[Go to Product page](#)

4 Images

Overview

Quantity:	100 µg
Target:	FGFR1
Binding Specificity:	AA 31-150
Reactivity:	Human
Host:	Mouse
Clonality:	Monoclonal
Conjugate:	This FGFR1 antibody is un-conjugated
Application:	Western Blotting (WB), ELISA, Proximity Ligation Assay (PLA)

Product Details

Purpose:	Mouse monoclonal antibody raised against a partial recombinant FGFR1.
Immunogen:	FGFR1 (AAH15035, 31 a.a. ~ 150 a.a) partial recombinant protein with GST tag. MW of the GST tag alone is 26 KDa.
Sequence:	AQPWGAPVEV ESFLVHPGDL LQLRCRLRDD VQSINWLRDG VQLAESNRTR ITGEEVEVQD SVPADSGLYA CVTSSPSGSD TTYFSVNVSD ALPSSSEDDDD DDDSSSEEKE TDNTKPNRMP
Clone:	5E9
Isotype:	IgG2a
Cross-Reactivity:	Human
Characteristics:	Antibody Reactive Against Recombinant Protein.

Target Details

Target:	FGFR1
Alternative Name:	FGFR1 (FGFR1 Products)
Background:	Full Gene Name: fibroblast growth factor receptor 1 Synonyms: BFGFR,CD331,CEK,FGFBR,FLG,FLJ99988,FLT2,HBGFR,KAL2,N-SAM
Gene ID:	2260
Pathways:	RTK Signaling , Fc-epsilon Receptor Signaling Pathway , EGFR Signaling Pathway , Neurotrophin Signaling Pathway , Sensory Perception of Sound , Stem Cell Maintenance , S100 Proteins

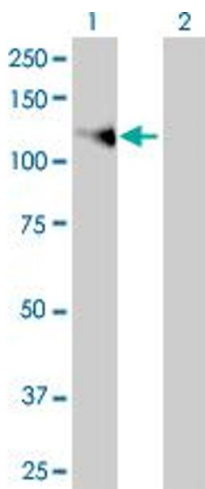
Application Details

Application Notes:	Optimal working dilution should be determined by the investigator.
Restrictions:	For Research Use only

Handling

Buffer:	In 1x PBS, pH 7.4
Handling Advice:	Aliquot to avoid repeated freezing and thawing.
Storage:	-20 °C
Storage Comment:	Store at -20°C or lower. Aliquot to avoid repeated freezing and thawing.

Images

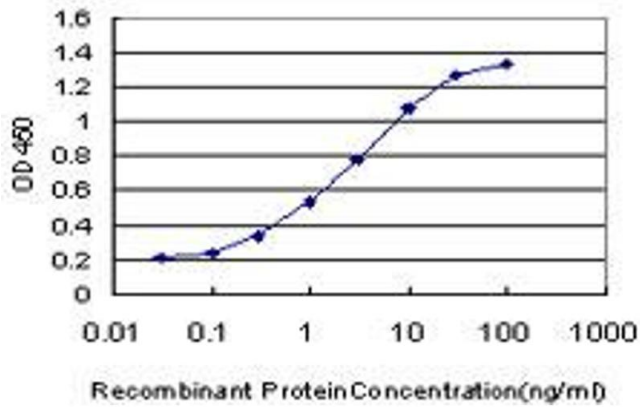


Western Blotting

Image 1. Western Blot analysis of FGFR1 expression in transfected 293T cell line by FGFR1 monoclonal antibody (M03), clone 5E9.

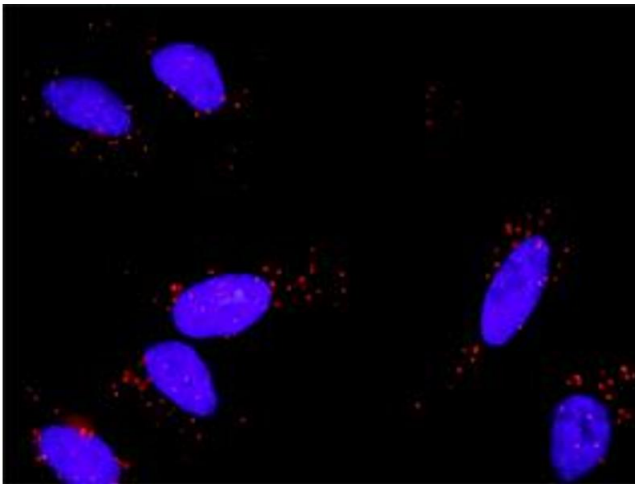
Lane 1: FGFR1 transfected lysate(92 kDa).

Lane 2: Non-transfected lysate.



ELISA

Image 2. Detection limit for recombinant GST tagged FGFR1 is approximately 0.03ng/ml as a capture antibody.



Proximity Ligation Assay

Image 3. Proximity Ligation Analysis of protein-protein interactions between FGF1 and FGFR1. HeLa cells were stained with anti-FGF1 rabbit purified polyclonal 1:1200 and anti-FGFR1 mouse monoclonal antibody 1:50. Each red dot represents the detection of protein-protein interaction complex, and nuclei were counterstained with DAPI (blue).

Please check the [product details page](#) for more images. Overall 4 images are available for ABIN560872.