



Datasheet for ABIN5608740
anti-CD8 antibody (AA 101-200)



[Go to Product page](#)

2 Images

Overview

Quantity:	100 µL
Target:	CD8
Binding Specificity:	AA 101-200
Reactivity:	Human, Mouse
Host:	Rabbit
Clonality:	Polyclonal
Conjugate:	This CD8 antibody is un-conjugated
Application:	ELISA, Western Blotting (WB)

Product Details

Immunogen:	KLH conjugated synthetic peptide derived from human CD8
Isotype:	IgG
Cross-Reactivity:	Human, Mouse, Rat
Purification:	Purified by Protein A.

Target Details

Target:	CD8
Alternative Name:	CD8 (CD8 Products)
Background:	Synonyms: T-cell surface glycoprotein CD8 alpha chain, Cd8a, T-cell surface glycoprotein Lyt-2, CD8a, Lyt-2, Lyt2

Target Details

Background: Identifies cytotoxic/suppressor T-cells that interact with MHC class I bearing targets. CD8 is thought to play a role in the process of T-cell mediated killing. CD8 alpha chains binds to class I MHC molecules alpha-3 domains.

Gene ID: 12525

UniProt: [P01731](#)

Application Details

Application Notes:

- WB 1:300-5000
- ELISA 1:500-1000
- FCM 1:20-100
- IHC-P 1:200-400
- IHC-F 1:100-500
- IF(IHC-P) 1:50-200
- IF(IHC-F) 1:50-200
- IF(ICC) 1:50-200
- ICC 1:100-500

Restrictions: For Research Use only

Handling

Format: Liquid

Concentration: 1 µg/µL

Buffer: 0.01M TBS(pH 7.4) with 1 % BSA, 0.02 % Proclin300 and 50 % Glycerol.

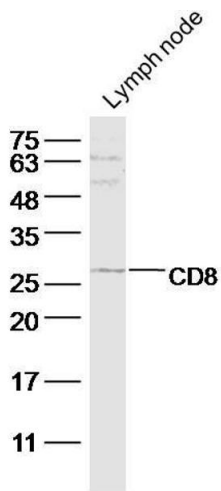
Preservative: ProClin

Precaution of Use: This product contains ProClin: a POISONOUS AND HAZARDOUS SUBSTANCE, which should be handled by trained staff only.

Storage: 4 °C, -20 °C

Storage Comment: Shipped at 4°C. Store at -20°C for one year. Avoid repeated freeze/thaw cycles.

Expiry Date: 12 months



Western Blotting

Image 1. Mouse lymph node lysate probed with CD8a Polyclonal Antibody at 1:300 overnight in 4°C. Followed by conjugation to the secondary antibody at 1:5000 90min in 37°C.

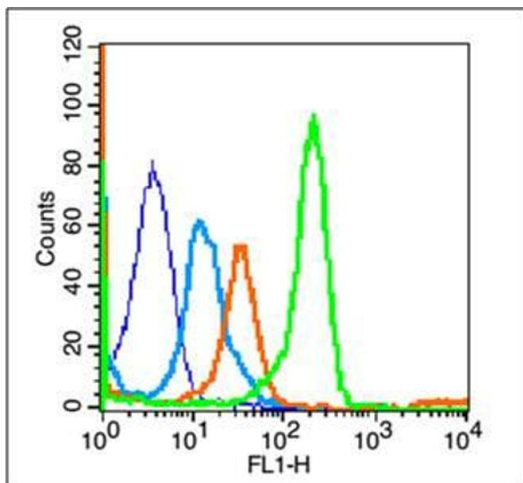


Image 2. Mouse Spleen cells probed with CD8a Polyclonal Antibody, unconjugated at 1:100 dilution for 30 minutes compared to control cells (blue) and isotype control (orange)