

Datasheet for ABIN5608762  
**anti-GATA3 antibody (AA 151-250)**

## 2 Images

[Go to Product page](#)

## Overview

Quantity:	100 µL
Target:	GATA3
Binding Specificity:	AA 151-250
Reactivity:	Mouse
Host:	Rabbit
Clonality:	Polyclonal
Conjugate:	This GATA3 antibody is un-conjugated
Application:	Western Blotting (WB), ELISA

## Product Details

Immunogen:	KLH conjugated synthetic peptide derived from human GATA3
Isotype:	IgG
Cross-Reactivity:	Mouse
Predicted Reactivity:	Human,Rat,Dog,Horse,Rabbit
Purification:	Purified by Protein A.

## Target Details

Target:	GATA3
Alternative Name:	GATA3 ( <a href="#">GATA3 Products</a> )
Background:	Synonyms: Trans-acting T-cell-specific transcription factor GATA-3, GATA3, GATA-binding

Target Details

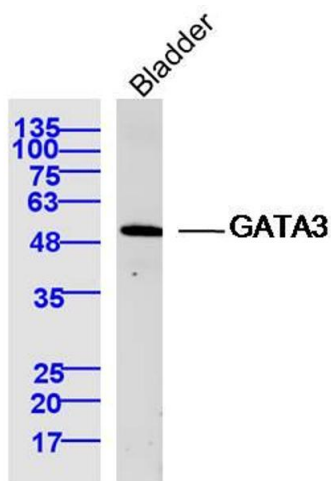
	factor 3
	Background: Transcriptional activator which binds to the enhancer of the T-cell receptor alpha and delta genes. Binds to the consensus sequence 5'-AGATAG-3'. Required for the T-helper 2 (Th2) differentiation process following immune and inflammatory responses.
Gene ID:	2625
UniProt:	<a href="#">P23771</a>
Pathways:	<a href="#">Hormone Transport</a> , <a href="#">Regulation of Hormone Metabolic Process</a> , <a href="#">Tube Formation</a>

Application Details

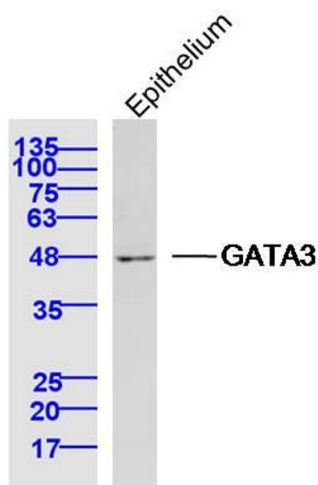
Application Notes:	WB 1:300-5000 ELISA 1:500-1000
Restrictions:	For Research Use only

Handling

Format:	Liquid
Concentration:	1 µg/µL
Buffer:	0.01M TBS( pH 7.4) with 1 % BSA, 0.02 % Proclin300 and 50 % Glycerol.
Preservative:	ProClin
Precaution of Use:	This product contains ProClin: a POISONOUS AND HAZARDOUS SUBSTANCE, which should be handled by trained staff only.
Storage:	4 °C,-20 °C
Storage Comment:	Shipped at 4°C. Store at -20°C for one year. Avoid repeated freeze/thaw cycles.
Expiry Date:	12 months



**Image 1.** Mouse bladder lysates probed with GATA3 Polyclonal Antibody, Unconjugated at 1:300 dilution and 4°C overnight incubation. Followed by conjugated secondary antibody incubation at 1:10000 for 60 min at 37°C.



**Image 2.** Mouse epithelium lysates probed with GATA3 Polyclonal Antibody, Unconjugated at 1:300 dilution and 4°C overnight incubation. Followed by conjugated secondary antibody incubation at 1:10000 for 60 min at 37°C.