



[Go to Product page](#)

Datasheet for ABIN5608770
anti-SLC10A2 antibody (AA 131-230)

1 Image

Overview

Quantity:	100 µL
Target:	SLC10A2
Binding Specificity:	AA 131-230
Reactivity:	Mouse, Human
Host:	Rabbit
Clonality:	Polyclonal
Conjugate:	This SLC10A2 antibody is un-conjugated
Application:	Western Blotting (WB), Immunohistochemistry (Paraffin-embedded Sections) (IHC (p))

Product Details

Isotype:	IgG
Cross-Reactivity:	Human, Mouse
Predicted Reactivity:	Rat,Dog,Cow,Horse,Rabbit
Purification:	Purified by Protein A.

Target Details

Target:	SLC10A2
Alternative Name:	SLC10A2 (SLC10A2 Products)
Background:	Synonyms: Ileal sodium/bile acid cotransporter, SLC10A2, ASBT, ISBT, NTCP2, Na(+)-dependent ileal bile acid transporter, Sodium/taurocholate cotransporting polypeptide, ileal,

Target Details

Solute carrier family 10 member 2

Background: Plays a critical role in the sodium-dependent reabsorption of bile acids from the lumen of the small intestine. Plays a key role in cholesterol metabolism.

UniProt: [Q12908](#)

Application Details

Application Notes: WB 1:300-5000
IHC-P 1:200-400

Restrictions: For Research Use only

Handling

Format: Liquid

Concentration: 1 µg/µL

Buffer: 0.01M TBS(pH 7.4) with 1 % BSA, 0.02 % Proclin300 and 50 % Glycerol.

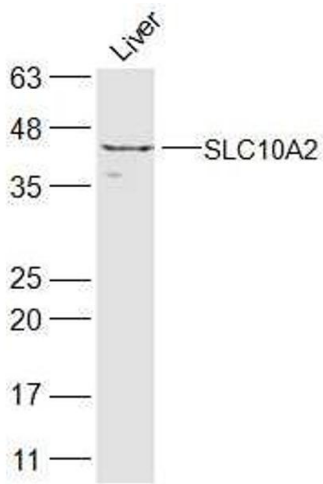
Preservative: ProClin

Precaution of Use: This product contains ProClin: a POISONOUS AND HAZARDOUS SUBSTANCE, which should be handled by trained staff only.

Storage: 4 °C,-20 °C

Storage Comment: Shipped at 4°C. Store at -20°C for one year. Avoid repeated freeze/thaw cycles.

Expiry Date: 12 months



Western Blotting

Image 1. Mouse liver lysate probed with SLC10A2 Polyclonal Antibody at 1:300 overnight at 4°C. Followed by a conjugated secondary antibody at 1:5000 for 90 min at 37°C.