

Datasheet for ABIN5608782

anti-Septin 6 antibody (Internal Region) (Biotin)[Go to Product page](#)**1** Image

Overview

Quantity:	100 µg
Target:	Septin 6 (SEPT6)
Binding Specificity:	Internal Region
Reactivity:	Human
Host:	Goat
Clonality:	Polyclonal
Conjugate:	This Septin 6 antibody is conjugated to Biotin
Application:	Western Blotting (WB), ELISA

Product Details

Purpose:	SEPT6, Biotinylated
Sequence:	DEVNAFKQRK TA.
Isotype:	IgG
Specificity:	This antibody is expected to recognize the reported isoforms NP_665798.1, NP_055944.2 and NP_665801.1. Reported variants NP_665799.1 and NP_665798.1 represent identical protein.
Cross-Reactivity:	Cow, Dog, Human
Purification:	Purified from goat serum by ammonium sulphate precipitation followed by antigen affinity chromatography using the immunizing peptide.
Grade:	Verified

Target Details

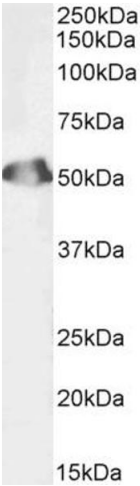
Target:	Septin 6 (SEPT6)
Alternative Name:	SEPTIN6 (SEPT6 Products)
Background:	SEPT6, septin 6, KIAA0128, MGC16619, MGC20339, SEP2, SEPT2, septin 2
Gene ID:	23157
NCBI Accession:	NP_665798 , NP_055944 , NP_665801

Application Details

Application Notes:	Western Blot: Approx 50 kDa band observed in Human Testis lysates (calculated MW of 49.7 kDa according to NP_055944.2). Recommended concentration: 0.03-1 µg/mL. Peptide ELISA: antibody detection limit dilution 1:4000.
Restrictions:	For Research Use only

Handling

Format:	Liquid
Concentration:	0.5 mg/mL
Buffer:	Supplied at 0.5 mg/mL in Tris saline, 0.02 % sodium azide, pH 7.3 with 0.5 % bovine serum albumin.
Preservative:	Sodium azide
Precaution of Use:	This product contains Sodium azide: a POISONOUS AND HAZARDOUS SUBSTANCE which should be handled by trained staff only.
Handling Advice:	Minimize freezing and thawing.
Storage:	-20 °C
Storage Comment:	Aliquot and store at -20°C, with minimal freeze/thawing. A working aliquot may be refrigerated at 4°C for a few weeks and still remain viable.



Western Blotting

Image 1. Biotinylated ABIN5608782 (1ug/ml) staining of Human Testis lysate (35µg protein in RIPA buffer). Primary incubation was 1 hour. Detected by chemiluminescence, using streptavidin-HRP and using NAP blocker as a substitute for skimmed milk.