



[Go to Product page](#)

Datasheet for ABIN5608784

## anti-TGFBI antibody (Internal Region) (Biotin)

### 1 Image

#### Overview

Quantity:	100 µg
Target:	TGFBI
Binding Specificity:	Internal Region
Reactivity:	Human
Host:	Goat
Clonality:	Polyclonal
Conjugate:	This TGFBI antibody is conjugated to Biotin
Application:	Western Blotting (WB), ELISA

#### Product Details

Purpose:	TGFBI, Biotinylated
Sequence:	QLYTD RTEKL RPE.
Isotype:	IgG
Cross-Reactivity:	Dog, Human, Mouse, Rat
Purification:	Purified from goat serum by ammonium sulphate precipitation followed by antigen affinity chromatography using the immunizing peptide.
Grade:	Verified

#### Target Details

Target:	TGFBI
---------	-------

## Target Details

---

Alternative Name:	TGFBI ( <a href="#">TGFBI Products</a> )
Background:	TGFBI, transforming growth factor, beta-induced, 68 kDa, BIGH3, CDB1, CDG2, CDGG1, CSD, CSD1, CSD2, CSD3, EBMD, LCD1, RGD-containing collagen-associated protein, kerato-epithelin
Gene ID:	7045, 21810, 24511
NCBI Accession:	<a href="#">NP_000349</a>

## Application Details

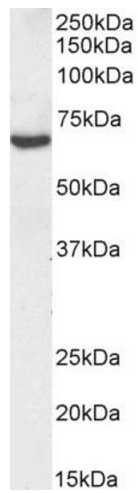
---

Application Notes:	Western Blot: Approx 70 kDa band observed in Human Kidney lysates (calculated MW of 74.7 kDa according to Human NP_000349.1). Recommended concentration: 0.2-0.5 µg/mL. Peptide ELISA: antibody detection limit dilution 1:32000.
Restrictions:	For Research Use only

## Handling

---

Format:	Liquid
Concentration:	0.5 mg/mL
Buffer:	Supplied at 0.5 mg/mL in Tris saline, 0.02 % sodium azide, pH 7.3 with 0.5 % bovine serum albumin.
Preservative:	Sodium azide
Precaution of Use:	This product contains Sodium azide: a POISONOUS AND HAZARDOUS SUBSTANCE which should be handled by trained staff only.
Handling Advice:	Minimize freezing and thawing.
Storage:	-20 °C
Storage Comment:	Aliquot and store at -20°C, with minimal freeze/thawing. A working aliquot may be refrigerated at 4°C for a few weeks and still remain viable.



### Western Blotting

**Image 1.** Biotinylated ABIN5608784 (0.3µg/ml) staining of Human Kidney lysate (35µg protein in RIPA buffer). Primary incubation was 1 hour. Detected by chemiluminescence, using streptavidin-HRP and using NAP blocker as a substitute for skimmed milk.