



Datasheet for ABIN5608817  
**Llama IgG Isotype Control**



[Go to Product page](#)

1 Image

Overview

Quantity:	0.5 mg
Target:	IgG
Reactivity:	Llama
Host:	Llama
Application:	ELISA, Flow Cytometry (FACS), Western Blotting (WB)

Product Details

Isotype:	IgG
Purification:	Llama IgG2 isotype control (which consists of IgG2a, IgG2b and IgG2c isotypes) has been prepared from llama serum by multiple chromatography steps using a combination of protein A and protein G chromatography. Coomassie stained SDS-PAGE of non-reduced llama IgG2 shows a band of ~100 kDa whereas the reduced form exhibits ~46 kDa. No bands corresponding to llama IgG1 or IgG3 are observed.

Target Details

Target:	IgG
Abstract:	<a href="#">IgG Products</a>
Target Type:	Antibody

Application Details

Application Notes:	Flow Cytometry Dilution: User Optimized
--------------------	---

## Application Details

---

Application Note: Llama IgG2 isotype control can be utilized as a control or standard reagent in Flow Cytometry, Western Blotting, and ELISA experiments where determination of sample isotype is important.

Western Blot Dilution: User Optimized

ELISA Dilution: User Optimized

---

Comment: Llama IgG2 isotype control (which consists of IgG2a, IgG2b and IgG2c isotypes) has been prepared from llama serum by multiple chromatography steps using a combination of protein A and protein G chromatography. Coomassie stained SDS-PAGE of non-reduced llama IgG2 shows a band of ~100 kDa whereas the reduced form exhibits ~46 kDa. No bands corresponding to llama IgG1 or IgG3 are observed.

---

Restrictions: For Research Use only

---

## Handling

---

Format: Liquid

---

Concentration: 1.0 mg/mL

---

Buffer: Buffer: 0.02 M Potassium Phosphate, 0.15 M Sodium Chloride, pH 7.2  
Stabilizer: None

---

Preservative: Sodium azide

---

Precaution of Use: This product contains Sodium azide: a POISONOUS AND HAZARDOUS SUBSTANCE which should be handled by trained staff only.

---

Storage: 4 °C, -20 °C

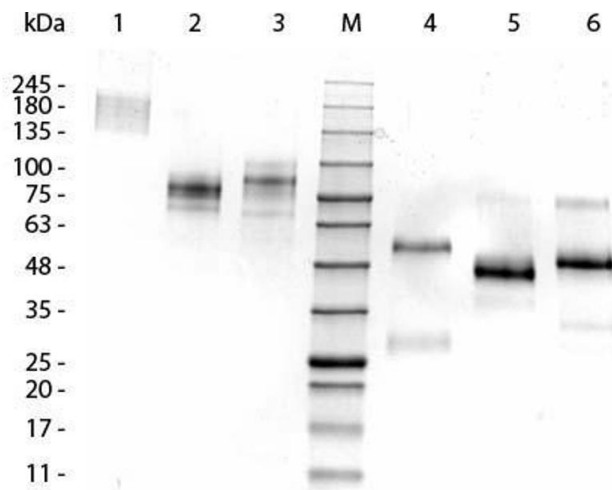
---

Storage Comment: Store vial at -20° C prior to opening. Aliquot contents and freeze at -20° C or below for extended storage. Avoid cycles of freezing and thawing. Centrifuge product if not completely clear after standing at room temperature. This product is stable for several weeks at 4° C as an undiluted liquid. Dilute only prior to immediate use.

---

Expiry Date: 12 months

---

**SDS-PAGE**

**Image 1.** SDS-PAGE of Llama IgG2 Isotype Control. Lane 1: Llama IgG1, Non-reduced. Lane 2: Llama IgG2, Non-reduced. Lane 3: Llama IgG3, Non-reduced. M: 3µL Opal Pre-stained Ladder (MB-210-0500). Lane 4: Llama IgG1, Reduced. Lane 5: Llama IgG2, Reduced. Lane 6: Llama IgG3, Reduced. Load: 1.0 µg per lane. Predicted/Observed size: 80 kDa Non-reduced; 46 kDa Reduced.