

Datasheet for ABIN561002  
**anti-GATA2 antibody (AA 1-102)**

## 6 Images

[Go to Product page](#)

## Overview

Quantity:	100 µg
Target:	GATA2
Binding Specificity:	AA 1-102
Reactivity:	Human
Host:	Mouse
Clonality:	Monoclonal
Conjugate:	This GATA2 antibody is un-conjugated
Application:	Western Blotting (WB), ELISA, Immunofluorescence (IF), RNA Interference (RNAi)

## Product Details

Purpose:	Mouse monoclonal antibody raised against a partial recombinant GATA2.
Immunogen:	GATA2 (AAH18988, 1 a.a. ~ 102 a.a) partial recombinant protein with GST tag. MW of the GST tag alone is 26 KDa.
Sequence:	MEVAPEQPRW MAHPAVLNAQ HPDSHHPGLA HNYMEPAQLL PPDEVDFFN HLDSQGNPYY ANPAHARARV SYSPA HARLT GGQMCRPHLL HSPGLPWLDG GK
Clone:	2D11
Isotype:	IgG2a
Cross-Reactivity:	Human
Characteristics:	Antibody Reactive Against Recombinant Protein.

Target Details

Target:	GATA2
Alternative Name:	GATA2 ( <a href="#">GATA2 Products</a> )
Background:	Full Gene Name: GATA binding protein 2 Synonyms: MGC2306,NFE1B
Gene ID:	2624
Pathways:	<a href="#">Stem Cell Maintenance</a>

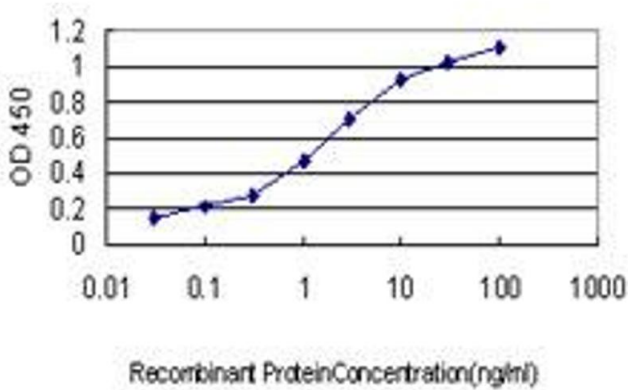
Application Details

Application Notes:	Optimal working dilution should be determined by the investigator.
Restrictions:	For Research Use only

Handling

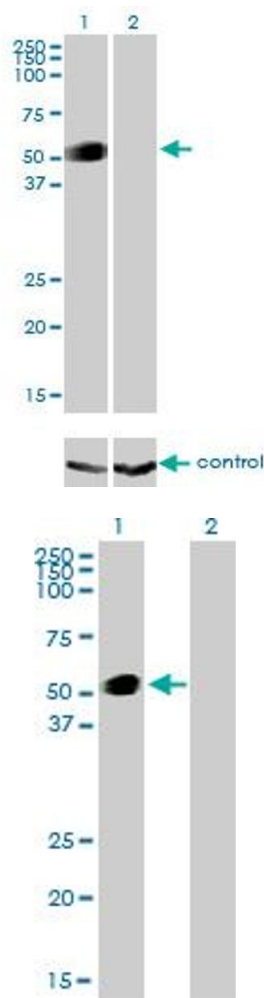
Buffer:	In 1x PBS, pH 7.4
Handling Advice:	Aliquot to avoid repeated freezing and thawing.
Storage:	-20 °C
Storage Comment:	Store at -20°C or lower. Aliquot to avoid repeated freezing and thawing.

Images



**ELISA**

**Image 1.** Detection limit for recombinant GST tagged GATA2 is approximately 0.03ng/ml as a capture antibody.



#### Western Blotting

**Image 2.** Western blot analysis of GATA2 over-expressed 293 cell line, cotransfected with GATA2 Validated Chimera RNAi (Lane 2) or non-transfected control (Lane 1). Blot probed with GATA2 monoclonal antibody (M01), clone 2D11. GAPDH ( 36.1 kDa ) used as specificity and loading control.

#### Western Blotting

**Image 3.** Western Blot analysis of GATA2 expression in transfected 293T cell line by GATA2 monoclonal antibody (M01), clone 2D11.

Lane 1: GATA2 transfected lysate(50.5 kDa).

Lane 2: Non-transfected lysate.

Please check the [product details page](#) for more images. Overall 6 images are available for ABIN561002.