



[Go to Product page](#)

Datasheet for ABIN561027
anti-GDF2 antibody (AA 320-419)

2 Images

Overview

Quantity:	50 µL
Target:	GDF2
Binding Specificity:	AA 320-419
Reactivity:	Human
Host:	Mouse
Clonality:	Polyclonal
Conjugate:	This GDF2 antibody is un-conjugated
Application:	Western Blotting (WB), ELISA

Product Details

Purpose:	Mouse polyclonal antibody raised against a partial recombinant GDF2.
Immunogen:	GDF2 (NP_057288, 320 a.a. ~ 419 a.a) partial recombinant protein with GST tag.
Sequence:	SAGAGSHCQK TSLRVNFEDI GWDSWIIAPK EYEAYECKGG CFFPLADDVT PTKHAIVQTL VHLKFPTKVG KACCVPTKLS PISVLYKDDM GVPTLKYHYE
Cross-Reactivity:	Human
Characteristics:	Antibody Reactive Against Recombinant Protein.

Target Details

Target:	GDF2
Alternative Name:	GDF2 (GDF2 Products)

Target Details

Background:	Full Gene Name: growth differentiation factor 2 Synonyms: BMP-9,BMP9
Gene ID:	2658
NCBI Accession:	NM_016204
Pathways:	Transition Metal Ion Homeostasis

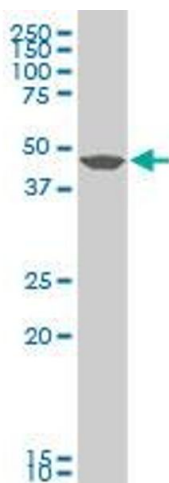
Application Details

Application Notes:	Optimal working dilution should be determined by the investigator.
Restrictions:	For Research Use only

Handling

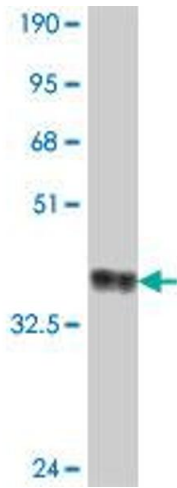
Format:	Liquid
Buffer:	50 % glycerol
Handling Advice:	Aliquot to avoid repeated freezing and thawing.
Storage:	-20 °C
Storage Comment:	Store at -20°C or lower. Aliquot to avoid repeated freezing and thawing.

Images



Western Blotting

Image 1. GDF2 polyclonal antibody (A01), Lot # 051012JC01. Western Blot analysis of GDF2 expression in Daoy.



Western Blotting

Image 2. Western Blot detection against Immunogen (37.11 kDa).