



Datasheet for ABIN561035
anti-GFI1 antibody (AA 1-91)



[Go to Product page](#)

5 Images

Overview

Quantity:	100 µg
Target:	GFI1
Binding Specificity:	AA 1-91
Reactivity:	Human
Host:	Mouse
Clonality:	Monoclonal
Conjugate:	This GFI1 antibody is un-conjugated
Application:	Western Blotting (WB), ELISA, Immunohistochemistry (Paraffin-embedded Sections) (IHC (p)), Immunofluorescence (IF)

Product Details

Purpose:	Mouse monoclonal antibody raised against a partial recombinant GFI1.
Immunogen:	GFI1 (NP_005254, 1 a.a. ~ 91 a.a) partial recombinant protein with GST tag. MW of the GST tag alone is 26 KDa.
Sequence:	MPRSFLVKSK KAHSYHQPRS PGPDYSLRLE NVPAPSRADS TSNAGGAKAE PRDRLSPESQ LTEAPDRASA SPRQLRSSVC ERSSEFEDEFW R
Clone:	3G8
Isotype:	IgG1
Cross-Reactivity:	Human
Characteristics:	Antibody Reactive Against Recombinant Protein.

Target Details

Target:	GFI1
Alternative Name:	GFI1 (GFI1 Products)
Background:	Full Gene Name: growth factor independent 1 transcription repressor Synonyms: FLJ94509,GFI-1,ZNF163
Gene ID:	2672
NCBI Accession:	NM_005263

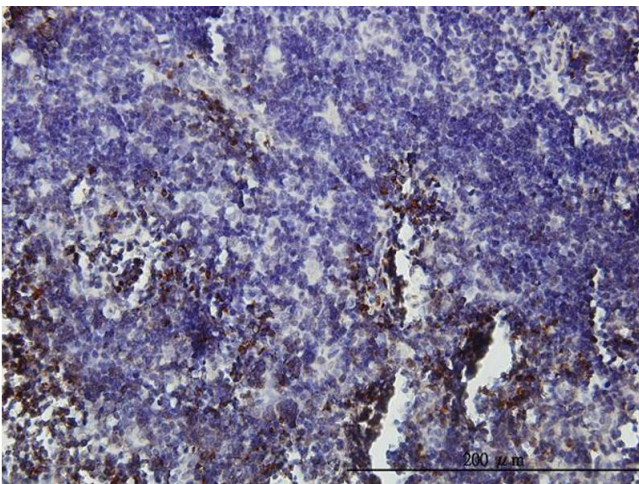
Application Details

Application Notes:	Optimal working dilution should be determined by the investigator.
Restrictions:	For Research Use only

Handling

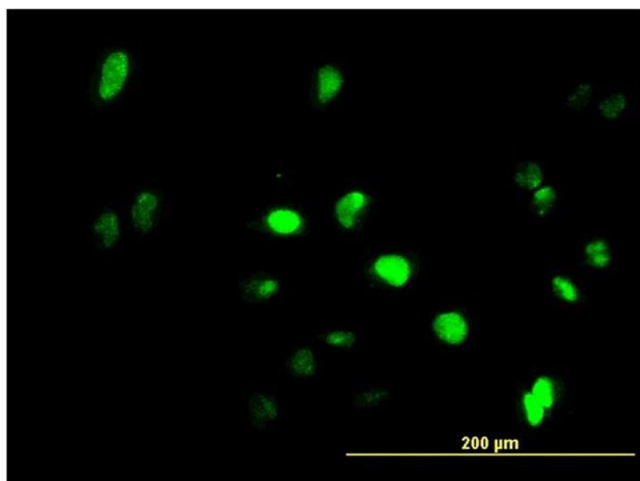
Buffer:	In 1x PBS, pH 7.4
Handling Advice:	Aliquot to avoid repeated freezing and thawing.
Storage:	-20 °C
Storage Comment:	Store at -20°C or lower. Aliquot to avoid repeated freezing and thawing.

Images



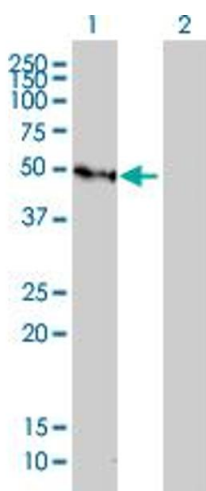
Immunostaining

Image 1. Immunoperoxidase of monoclonal antibody to GFI1 on formalin-fixed paraffin-embedded human lymph node. [antibody concentration 3 ug/ml]



Immunofluorescence

Image 2. Immunofluorescence of monoclonal antibody to GFI1 on HeLa cell. [antibody concentration 10 ug/ml]



Western Blotting

Image 3. Western Blot analysis of GFI1 expression in transfected 293T cell line by GFI1 monoclonal antibody (M01), clone 3G8.

Lane 1: GFI1 transfected lysate(45 KDa).

Lane 2: Non-transfected lysate.

Please check the [product details page](#) for more images. Overall 5 images are available for ABIN561035.