

Datasheet for ABIN561042

anti-Growth Hormone Receptor antibody (AA 19-118)**3** Images[Go to Product page](#)

Overview

Quantity:	100 µg
Target:	Growth Hormone Receptor (GHR)
Binding Specificity:	AA 19-118
Reactivity:	Human
Host:	Mouse
Clonality:	Monoclonal
Conjugate:	This Growth Hormone Receptor antibody is un-conjugated
Application:	Western Blotting (WB), ELISA, Proximity Ligation Assay (PLA)

Product Details

Purpose:	Mouse monoclonal antibody raised against a partial recombinant GHR.
Immunogen:	GHR (NP_000154, 19 a.a. ~ 118 a.a) partial recombinant protein with GST tag. MW of the GST tag alone is 26 KDa.
Sequence:	FSGSEATAAI LSRAPWSLQS VNPGLKTNSS KEPKFTKCRS PERETF SCHW TDEVHHGTKN LGPIQLFYTR RNTQEWTQEW KECPDYVSAG ENSCYFNSSF
Clone:	3A12
Isotype:	IgG2a
Cross-Reactivity:	Human
Characteristics:	Antibody Reactive Against Recombinant Protein.

Target Details

Target:	Growth Hormone Receptor (GHR)
Alternative Name:	GHR (GHR Products)
Background:	Full Gene Name: growth hormone receptor Synonyms: GHBP
Gene ID:	2690
NCBI Accession:	NM_000163
Pathways:	NF-kappaB Signaling , JAK-STAT Signaling , Response to Growth Hormone Stimulus

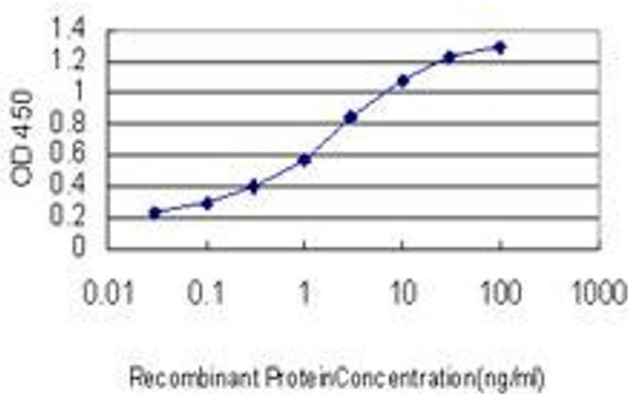
Application Details

Application Notes:	Optimal working dilution should be determined by the investigator.
Restrictions:	For Research Use only

Handling

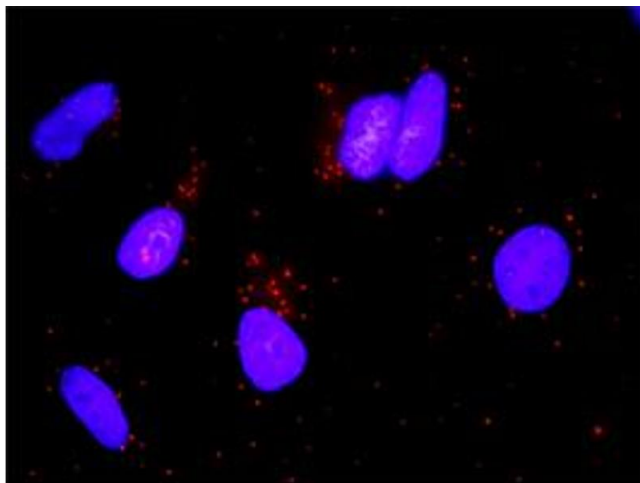
Buffer:	In 1x PBS, pH 7.4
Handling Advice:	Aliquot to avoid repeated freezing and thawing.
Storage:	-20 °C
Storage Comment:	Store at -20°C or lower. Aliquot to avoid repeated freezing and thawing.

Images



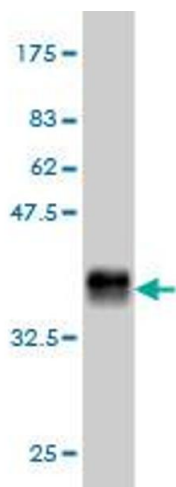
ELISA

Image 1. Detection limit for recombinant GST tagged GHR is approximately 0.1 ng/ml as a capture antibody.



Proximity Ligation Assay

Image 2. Proximity Ligation Analysis of protein-protein interactions between STAT5A and GHR. HeLa cells were stained with anti-STAT5A rabbit purified polyclonal 1:1200 and anti-GHR mouse monoclonal antibody 1:50. Each red dot represents the detection of protein-protein interaction complex, and nuclei were counterstained with DAPI (blue).



Western Blotting

Image 3. Western Blot detection against Immunogen (36.74 kDa) .