



[Go to Product page](#)

Datasheet for ABIN561053
anti-GLI3 antibody (AA 1-110)

4 Images

Overview

Quantity:	100 µg
Target:	GLI3
Binding Specificity:	AA 1-110
Reactivity:	Human
Host:	Mouse
Clonality:	Monoclonal
Conjugate:	This GLI3 antibody is un-conjugated
Application:	Western Blotting (WB), ELISA, Immunofluorescence (IF), Proximity Ligation Assay (PLA)

Product Details

Purpose:	Mouse monoclonal antibody raised against a partial recombinant GLI3.
Immunogen:	GLI3 (NP_000159, 1 a.a. ~ 110 a.a) partial recombinant protein with GST tag. MW of the GST tag alone is 26 KDa.
Sequence:	MEAQSHSSTT TEKKKVENSI VKCSTRTDVS EKAVASSTTS NEDESPGQTY HRERRNAITM QPQNVQGLSK VSEEPSTSSD ERASLIKKEI HGSLPHVAEP SVPYRGTVFA
Clone:	2C9
Isotype:	IgG2a
Cross-Reactivity:	Human
Characteristics:	Antibody Reactive Against Recombinant Protein.

Target Details

Target:	GLI3
Alternative Name:	GLI3 (GLI3 Products)
Background:	Full Gene Name: GLI-Kruppel family member GLI3 Synonyms: ACLS,GCPS,PAP-A,PAPA,PAPA1,PAPB,PHS,PPDIV
Gene ID:	2737
NCBI Accession:	NM_000168
Pathways:	Hedgehog Signaling

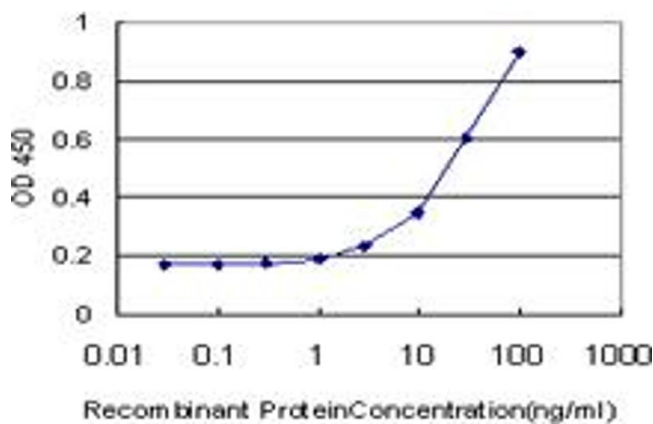
Application Details

Application Notes:	Optimal working dilution should be determined by the investigator.
Restrictions:	For Research Use only

Handling

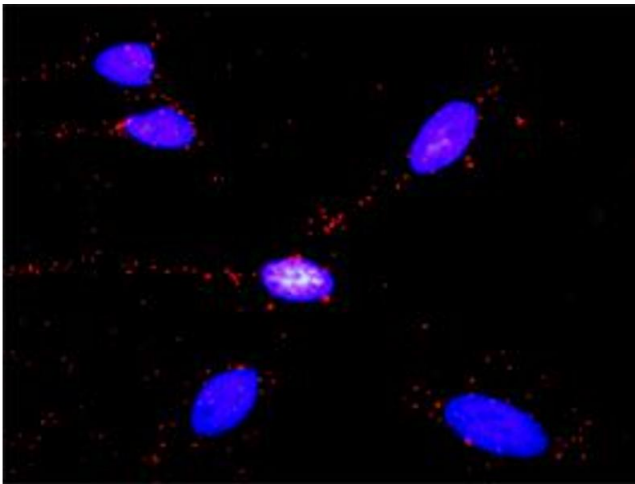
Buffer:	In 1x PBS, pH 7.4
Handling Advice:	Aliquot to avoid repeated freezing and thawing.
Storage:	-20 °C
Storage Comment:	Store at -20°C or lower. Aliquot to avoid repeated freezing and thawing.

Images



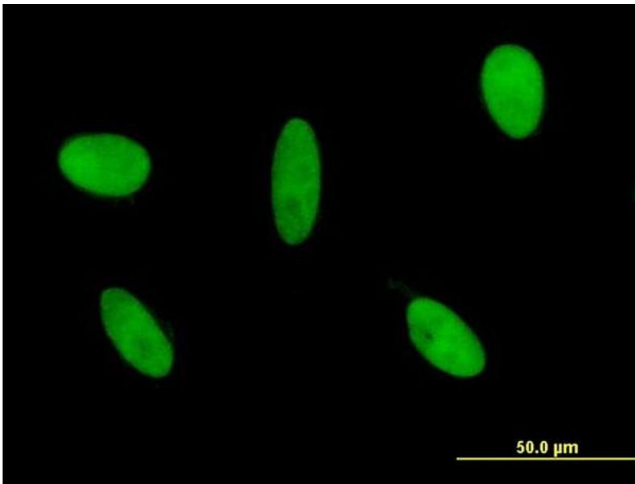
ELISA

Image 1. Detection limit for recombinant GST tagged GLI3 is approximately 1 ng/ml as a capture antibody.



Proximity Ligation Assay

Image 2. Proximity Ligation Analysis of protein-protein interactions between SMAD1 and GLI3. HeLa cells were stained with anti-SMAD1 rabbit purified polyclonal 1:1200 and anti-GLI3 mouse monoclonal antibody 1:50. Each red dot represents the detection of protein-protein interaction complex, and nuclei were counterstained with DAPI (blue).



Immunofluorescence

Image 3. Immunofluorescence of monoclonal antibody to GLI3 on HeLa cell. [antibody concentration 10 μg/ml]

Please check the [product details page](#) for more images. Overall 4 images are available for ABIN561053.