



[Go to Product page](#)

Datasheet for ABIN561054

anti-GLO1 antibody (AA 1-184)

3 Images

2 Publications

Overview

Quantity:	50 µL
Target:	GLO1
Binding Specificity:	AA 1-184
Reactivity:	Human
Host:	Mouse
Clonality:	Polyclonal
Conjugate:	This GLO1 antibody is un-conjugated
Application:	Western Blotting (WB), ELISA

Product Details

Purpose:	Mouse polyclonal antibody raised against a full-length recombinant GLO1.
Immunogen:	GLO1 (AAH11365, 1 a.a. ~ 184 a.a) full-length recombinant protein with GST tag.
Sequence:	MAEPQPPSGG LTDEAALSYC SDADPSTKDF LLQQTMLRVK DPKKSLDFYT RVLGMTLIQK CDFPIMKFSL YFLAYEDKND IPKEKDEKIA WALSRKATLE LTHNWGTEDD ETQSYHNGNS DPRGFGHIGI AVPDVYSACK RFEELGVKFV KKPDDGKMKG LAFIQDPDGY WIEILNPNKM ATLM
Cross-Reactivity:	Human
Characteristics:	Antibody Reactive Against Recombinant Protein.

Target Details

Target:	GLO1
---------	------

Target Details

Alternative Name: GLO1 ([GLO1 Products](#))

Background: Full Gene Name: glyoxalase I
Synonyms: GLOD1, GLYI

Gene ID: 2739

Application Details

Application Notes: Optimal working dilution should be determined by the investigator.

Restrictions: For Research Use only

Handling

Format: Liquid

Buffer: 50 % glycerol

Handling Advice: Aliquot to avoid repeated freezing and thawing.

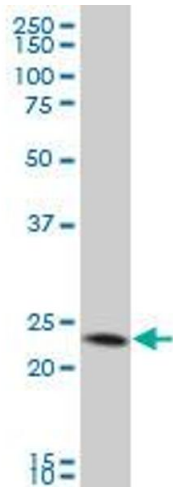
Storage: -20 °C

Storage Comment: Store at -20°C or lower. Aliquot to avoid repeated freezing and thawing.

Publications

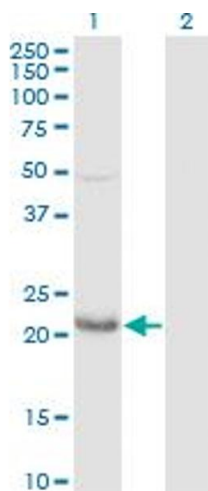
Product cited in: Wang, Kuramitsu, Ueno, Suzuki, Yoshino, Iizuka, Akada, Kitagawa, Oka, Nakamura: "Glyoxalase I (GLO1) is up-regulated in pancreatic cancerous tissues compared with related non-cancerous tissues." in: **Anticancer research**, Vol. 32, Issue 8, pp. 3219-22, (2012) ([PubMed](#)).

Sato, Kwon, Kamisuki, Srivastava, Mao, Kawazoe, Uesugi: "Polyproline-rod approach to isolating protein targets of bioactive small molecules: isolation of a new target of indomethacin." in: **Journal of the American Chemical Society**, Vol. 129, Issue 4, pp. 873-80, (2007) ([PubMed](#)).



Western Blotting

Image 1. GLO1 polyclonal antibody (A01), Lot # 060912JCS1 Western Blot analysis of GLO1 expression in HeLa



Western Blotting

Image 2. Western Blot analysis of GLO1 expression in transfected 293T cell line by GLO1 polyclonal antibody (A01).

Lane1:GLO1 transfected lysate (Predicted MW: 20.7 KDa).
Lane2:Non-transfected lysate.



Western Blotting

Image 3. Western Blot detection against Immunogen (46.35 KDa) .