



[Go to Product page](#)

Datasheet for ABIN561087

anti-Golgin A2 (GOLGA2) (AA 1-120) antibody

3 Images

Overview

Quantity:	100 µg
Target:	Golgin A2 (GOLGA2)
Binding Specificity:	AA 1-120
Reactivity:	Human
Host:	Mouse
Clonality:	Monoclonal
Conjugate:	Un-conjugated
Application:	Western Blotting (WB), ELISA

Product Details

Purpose:	Mouse monoclonal antibody raised against a partial recombinant GOLGA2.
Immunogen:	GOLGA2 (AAH06381.1, 1 a.a. ~ 120 a.a) partial recombinant protein with GST tag. MW of the GST tag alone is 26 KDa.
Sequence:	EQAEARRQIL ETMQNDRRTI SRALSQNREL KEQLAELQSG FVKLTNENME ITSALQSEQH VKRELGKKLK ELQEKLSELK ETVELKSQEA QSLQQQRDQY LGHLQQYVAA YQQLTSEKEV
Clone:	2C6
Isotype:	IgG1
Cross-Reactivity:	Human
Characteristics:	Antibody Reactive Against Recombinant Protein.

Target Details

Target:	Golgin A2 (GOLGA2)
Alternative Name:	GOLGA2 (GOLGA2 Products)
Background:	Full Gene Name: golgi autoantigen, golgin subfamily a, 2 Synonyms: GM130,MGC20672
Gene ID:	2801
Pathways:	SARS-CoV-2 Protein Interactome

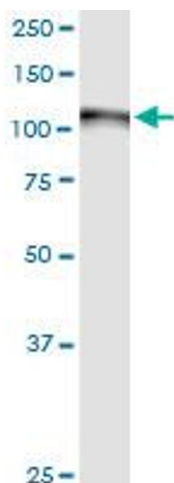
Application Details

Application Notes:	Optimal working dilution should be determined by the investigator.
Restrictions:	For Research Use only

Handling

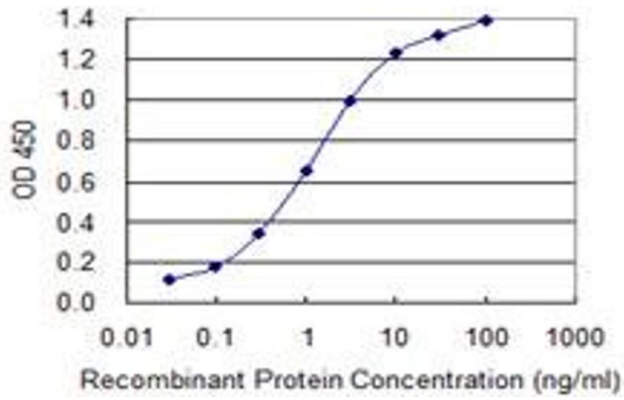
Buffer:	In 1x PBS, pH 7.4
Handling Advice:	Aliquot to avoid repeated freezing and thawing.
Storage:	-20 °C
Storage Comment:	Store at -20°C or lower. Aliquot to avoid repeated freezing and thawing.

Images



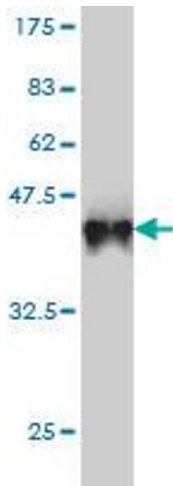
Western Blotting

Image 1. GOLGA2 monoclonal antibody (M01), clone 2C6. Western Blot analysis of GOLGA2 expression in human spleen.



ELISA

Image 2. Detection limit for recombinant GST tagged GOLGA2 is 0.03 ng/ml as a capture antibody.



Western Blotting

Image 3. Western Blot detection against Immunogen (38.94 kDa).