



[Go to Product page](#)

Datasheet for ABIN561098

## anti-GPD2 antibody (AA 1-378)

1 Image

2 Publications

### Overview

Quantity:	50 µL
Target:	GPD2
Binding Specificity:	AA 1-378
Reactivity:	Human
Host:	Mouse
Clonality:	Polyclonal
Conjugate:	This GPD2 antibody is un-conjugated
Application:	Western Blotting (WB), ELISA

### Product Details

Purpose:	Mouse polyclonal antibody raised against a full-length recombinant GPD2.
Immunogen:	GPD2 (AAH19874, 1 a.a. ~ 378 a.a) full-length recombinant protein with GST tag.
Sequence:	MAFQKAVKGT LVGGGALATV LGLSQFAHYR RKQMNLAYVK AACISEPVN REPPSREAQL LTLQNTSEFD ILVIGGGATG SGCALDAVTR GLKTALVERD DFSSGTSSRS TKLIHGGVRY LQKAIMKLDI EQYRMVKEAL HERANLLEIA PHLSAPLPIM LPVYKWWQLP YYWVGKLYD LVAGSNCLKS SYVLSKSRAL EHFPMQLQDK LVGAIVYYDG QHNDARMNLA IALTAARYGA ATANYMEVVS LLKKTDPQTG KVHVSGARCK DVLTGQEFDV RAKCVINATG PFTDSVRKMD DKDAAAICQP SAGVHVIMPG YYSPESMGLL DPATSDGRVI FFLPWQKMTI AGTTDPTDV THHIPSEED INFILNEV
Cross-Reactivity:	Human
Characteristics:	Antibody Reactive Against Recombinant Protein.

## Target Details

---

Target:	GPD2
Alternative Name:	GPD2 ( <a href="#">GPD2 Products</a> )
Background:	Full Gene Name: glycerol-3-phosphate dehydrogenase 2 (mitochondrial) Synonyms: GDH2,GPDM,mGPDH
Gene ID:	2820

## Application Details

---

Application Notes:	Optimal working dilution should be determined by the investigator.
Restrictions:	For Research Use only

## Handling

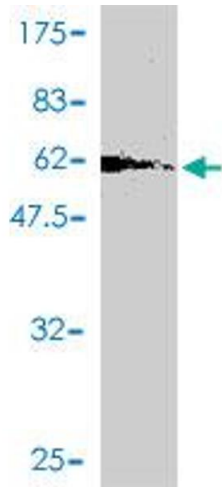
---

Format:	Liquid
Buffer:	50 % glycerol
Handling Advice:	Aliquot to avoid repeated freezing and thawing.
Storage:	-20 °C
Storage Comment:	Store at -20°C or lower. Aliquot to avoid repeated freezing and thawing.

## Publications

---

Product cited in:	<p>Bharadwaj, Zhou, Molina, Criswell, Lu: "Examination of bioenergetic function in the inner mitochondrial membrane peptidase 2-like (Immp2l) mutant mice." in: <b>Redox biology</b>, Vol. 2C, pp. 1008-1015, (2014) (<a href="#">PubMed</a>).</p> <p>Lu, Poirier, Gaspar, Gratzke, Harrison, Busija, Matzuk, Andersson, Overbeek, Bishop: "A mutation in the inner mitochondrial membrane peptidase 2-like gene (Immp2l) affects mitochondrial function and impairs fertility in mice." in: <b>Biology of reproduction</b>, Vol. 78, Issue 4, pp. 601-10, (2008) (<a href="#">PubMed</a>).</p>
-------------------	---



### Western Blotting

**Image 1.** Western Blot detection against Immunogen (67.69 KDa) .