



[Go to Product page](#)

Datasheet for ABIN561099  
**anti-GPD2 antibody (AA 1-378)**

3 Images

Overview

Quantity:	100 µg
Target:	GPD2
Binding Specificity:	AA 1-378
Reactivity:	Human
Host:	Mouse
Clonality:	Monoclonal
Conjugate:	This GPD2 antibody is un-conjugated
Application:	Western Blotting (WB), ELISA

Product Details

Purpose:	Mouse monoclonal antibody raised against a full length recombinant GPD2.
Immunogen:	GPD2 (AAH19874, 1 a.a. ~ 378 a.a) full-length recombinant protein with GST tag. MW of the GST tag alone is 26 KDa.
Sequence:	MAFQKAVKGT LVGGGALATV LGLSQFAHYR RKQMNLAYVK AADCISEPVN REPPSREAQL LTLQNTSEFD ILVIGGGATG SGCALDAVTR GLKTALVERD DFSSGTSSRS TKLIHGGVRY LQKAIMKLDI EQYRMVKEAL HERANLLEIA PHLAPLPIM LPVYKWWQLP YYWVGKLYD LVAGSNCLKS SYVLSKSRAL EHFPMQKDK LVGAIVYYDG QHNDARMNLA IALTAARYGA ATANYMEVVS LLKKTDPQTG KVHVSGARCK DVLTGQEFDV RAKCVINATG PFTDSVRKMD DKDAAAICQP SAGVHIVMPG YYSPESMGLL DPATSDGRVI FFLPWQKMTI AGTTDTPTDV THHIPSEED INFILNEV
Clone:	2C11-1F4

## Product Details

---

Isotype:	IgG1
Cross-Reactivity:	Human
Characteristics:	Antibody Reactive Against Recombinant Protein.

## Target Details

---

Target:	GPD2
Alternative Name:	GPD2 ( <a href="#">GPD2 Products</a> )
Background:	Full Gene Name: glycerol-3-phosphate dehydrogenase 2 (mitochondrial) Synonyms: GDH2,GPDM,mGPDH
Gene ID:	2820

## Application Details

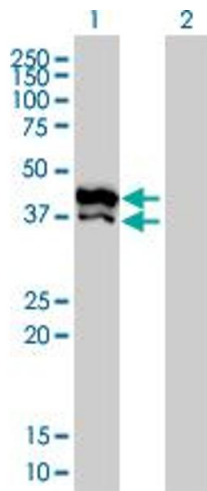
---

Application Notes:	Optimal working dilution should be determined by the investigator.
Restrictions:	For Research Use only

## Handling

---

Buffer:	In 1x PBS, pH 7.4
Handling Advice:	Aliquot to avoid repeated freezing and thawing.
Storage:	-20 °C
Storage Comment:	Store at -20°C or lower. Aliquot to avoid repeated freezing and thawing.

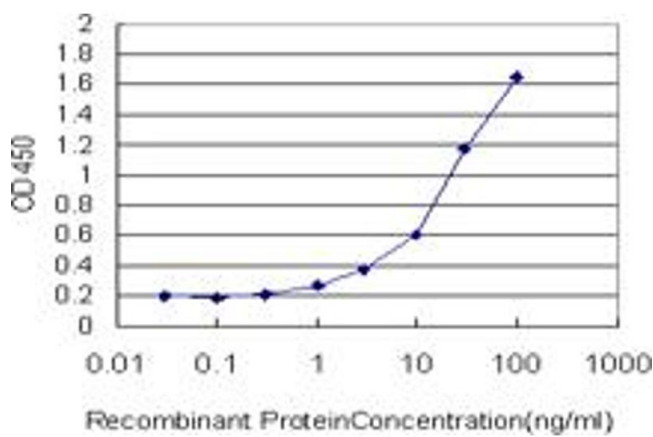


### Western Blotting

**Image 1.** Western Blot analysis of GPD2 expression in transfected 293T cell line by GPD2 monoclonal antibody (M02), clone 2C11-1F4.

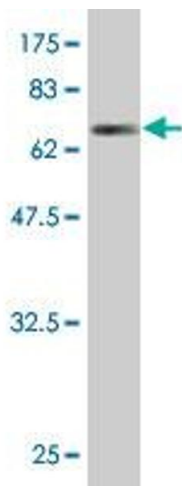
Lane 1: GPD2 transfected lysate(41 kDa).

Lane 2: Non-transfected lysate.



### ELISA

**Image 2.** Detection limit for recombinant GST tagged GPD2 is approximately 1 ng/ml as a capture antibody.



### Western Blotting

**Image 3.** Western Blot detection against Immunogen (67.32 kDa).