

Datasheet for ABIN5611124

## anti-ATP2A1/SERCA1 antibody (AA 487-631)

5 Images



[Go to Product page](#)

### Overview

Quantity:	100 µL
Target:	ATP2A1/SERCA1 (ATP2A1)
Binding Specificity:	AA 487-631
Reactivity:	Human
Host:	Mouse
Clonality:	Monoclonal
Conjugate:	This ATP2A1/SERCA1 antibody is un-conjugated
Application:	Western Blotting (WB), ELISA, Flow Cytometry (FACS)

### Product Details

Purpose:	ATP2A1 Antibody
Immunogen:	Purified recombinant fragment of human ATP2A1 (AA: 487-631) expressed in E. Coli.
Clone:	3D1H6
Isotype:	IgG1
Purification:	Purified antibody

### Target Details

Target:	ATP2A1/SERCA1 (ATP2A1)
Alternative Name:	ATP2A1 ( <a href="#">ATP2A1 Products</a> )
Background:	Description: This gene encodes one of the SERCA Ca <sup>2+</sup> -ATPases, which are intracellular

## Target Details

pumps located in the sarcoplasmic or endoplasmic reticula of muscle cells. This enzyme catalyzes the hydrolysis of ATP coupled with the translocation of calcium from the cytosol to the sarcoplasmic reticulum lumen, and is involved in muscular excitation and contraction. Mutations in this gene cause some autosomal recessive forms of Brody disease, characterized by increasing impairment of muscular relaxation during exercise. Alternative splicing results in three transcript variants encoding different isoforms.

Aliases: ATP2A, SERCA1

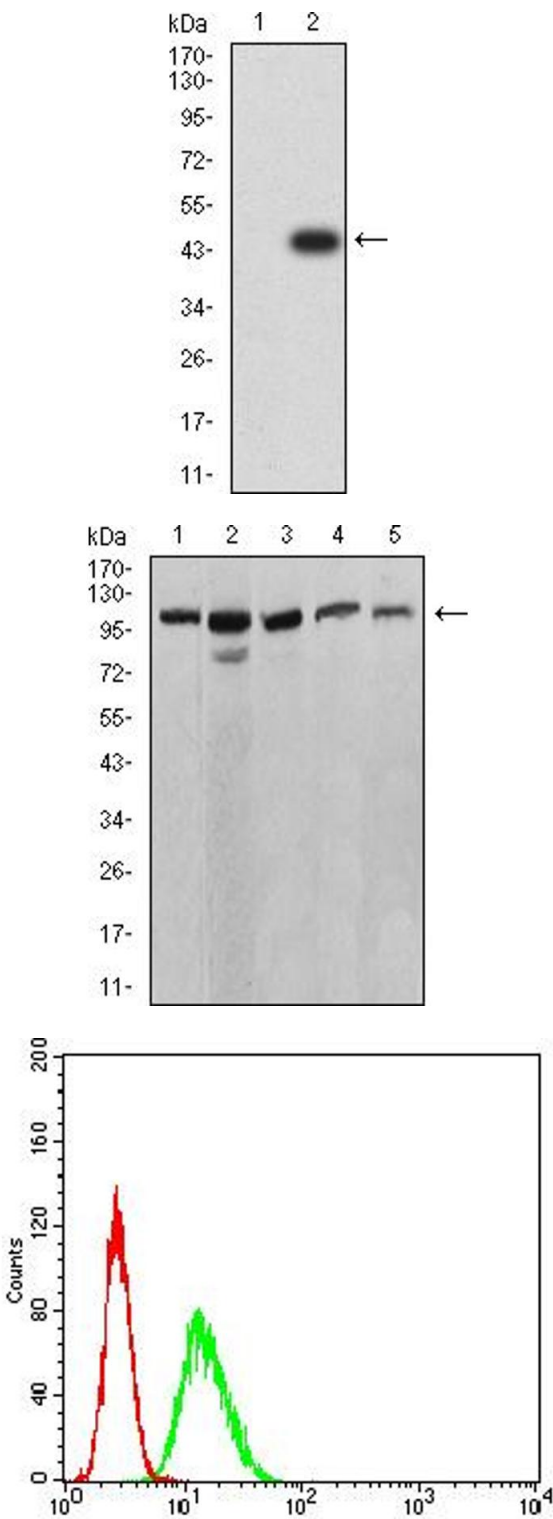
Molecular Weight:	110kDa
Gene ID:	487
HGNC:	487
UniProt:	<a href="#">O14983</a>
Pathways:	<a href="#">Ribonucleoside Biosynthetic Process</a>

## Application Details

Application Notes:	ELISA: 1/10000 FCM: 1/200 - 1/400
Restrictions:	For Research Use only

## Handling

Format:	Liquid
Buffer:	Purified antibody in PBS with 0.05 % sodium azide.
Preservative:	Sodium azide
Precaution of Use:	This product contains Sodium azide: a POISONOUS AND HAZARDOUS SUBSTANCE which should be handled by trained staff only.
Storage:	4 °C,-20 °C
Storage Comment:	Store at 4°C short term. Aliquot and store at -20°C long term. Avoid freeze/thaw cycles.



Western Blotting

**Image 1.** Western blot analysis using ATP2A1 mAb against HEK293 (1) and ATP2A1 (AA: 487-631)-hlgGFc transfected HEK293 (2) cell lysate.

Western Blotting

**Image 2.** Western blot analysis using ATP2A1 mouse mAb against C2C12 (1), COS7 (2), HeLa (3), K562 (4), and Jurkat (5) cell lysate.

Flow Cytometry

**Image 3.** Flow cytometric analysis of HeLa cells using ATP2A1 mouse mAb (green) and negative control (red).

Please check the [product details page](#) for more images. Overall 5 images are available for ABIN5611124.