



[Go to Product page](#)

Datasheet for ABIN5611126
anti-CD166 antibody (AA 227-381)

6 Images

Overview

Quantity:	0.1 mg
Target:	CD166 (ALCAM)
Binding Specificity:	AA 227-381
Reactivity:	Human
Host:	Mouse
Clonality:	Monoclonal
Conjugate:	This CD166 antibody is un-conjugated
Application:	Western Blotting (WB), Immunohistochemistry (IHC), ELISA, Flow Cytometry (FACS), Immunocytochemistry (ICC), Neutralization (Neut)

Product Details

Immunogen:	Purified recombinant fragment of human CD166 (AA: extra 227-381) expressed in E. coli.
Clone:	2F1B12
Isotype:	IgG1
Purification:	purified

Target Details

Target:	CD166 (ALCAM)
Alternative Name:	CD166 (ALCAM Products)
Background:	Description: This gene encodes activated leukocyte cell adhesion molecule (ALCAM), also

Target Details

known as CD166 (cluster of differentiation 166), which is a member of a subfamily of immunoglobulin receptors with five immunoglobulin-like domains (VVC2C2C2) in the extracellular domain. This protein binds to T-cell differentiation antigene CD6, and is implicated in the processes of cell adhesion and migration. Multiple alternatively spliced transcript variants encoding different isoforms have been found.

Aliases: MEMD, ALCAM

Molecular Weight: 65 kDa

Gene ID: 214

HGNC: 214

Application Details

Application Notes: ELISA: 1:10000, WB: 1:500 - 1:2000, ICC: N/A, FCM: 1:200 - 1:400, IHC: 1:200 - 1:1000

Restrictions: For Research Use only

Handling

Format: Liquid

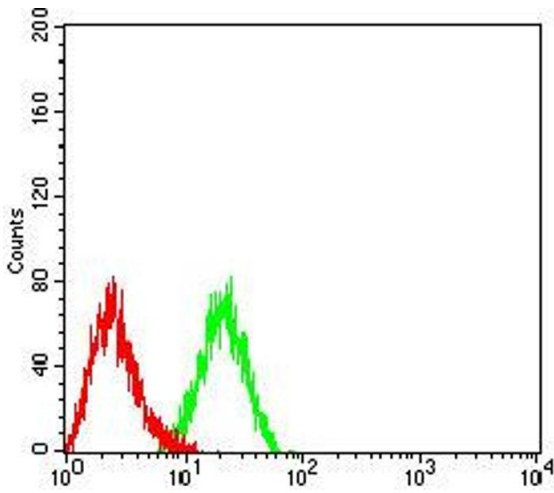
Buffer: Purified antibody in PBS with 0.05 % sodium azide

Preservative: Sodium azide

Precaution of Use: This product contains Sodium azide: a POISONOUS AND HAZARDOUS SUBSTANCE which should be handled by trained staff only.

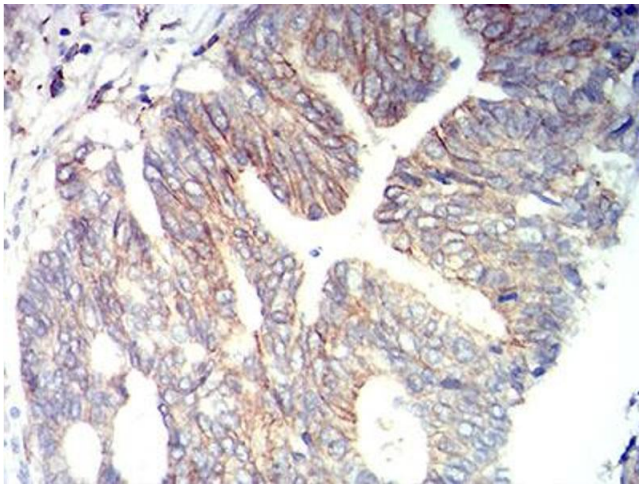
Storage: 4 °C/-20 °C

Storage Comment: 4°C, -20°C for long term storage



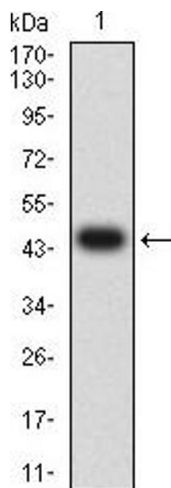
Flow Cytometry

Image 1. Flow cytometric analysis of HL-60 cells using CD166 mouse mAb (green) and negative control (red).



Immunohistochemistry

Image 2. Immunohistochemical analysis of paraffin-embedded rectum cancer tissues using CD166 mouse mAb with DAB staining.



Western Blotting

Image 3. Western blot analysis using CD166 mAb against human CD166 (AA: extra 227-381) recombinant protein. (Expected MW is 47 kDa)

Please check the [product details page](#) for more images. Overall 6 images are available for ABIN5611126.