

Datasheet for ABIN5611128

anti-Adenosine A2a Receptor antibody (AA 274-412)

5 Images

[Go to Product page](#)

Overview

Quantity:	0.1 mg
Target:	Adenosine A2a Receptor (ADORA2A)
Binding Specificity:	AA 274-412
Reactivity:	Human
Host:	Mouse
Clonality:	Monoclonal
Application:	Western Blotting (WB), ELISA, Immunohistochemistry (IHC), Flow Cytometry (FACS), Immunocytochemistry (ICC), Neutralization (Neut)

Product Details

Immunogen:	Purified recombinant fragment of human ADORA2A (AA: 274-412) expressed in E. coli.
Clone:	6A6G11
Isotype:	IgG2a
Purification:	purified

Target Details

Target:	Adenosine A2a Receptor (ADORA2A)
Alternative Name:	ADORA2A (ADORA2A Products)
Background:	Description: This gene encodes a member of the guanine nucleotide-binding protein (G protein)-coupled receptor (GPCR) superfamily, which is subdivided into classes and subtypes. The receptors are seven-pass transmembrane proteins that respond to extracellular cues and

Target Details

activate intracellular signal transduction pathways. This protein, an adenosine receptor of A2A subtype, uses adenosine as the preferred endogenous agonist and preferentially interacts with the G(s) and G(olf) family of G proteins to increase intracellular cAMP levels. It plays an important role in many biological functions, such as cardiac rhythm and circulation, cerebral and renal blood flow, immune function, pain regulation, and sleep. It has been implicated in pathophysiological conditions such as inflammatory diseases and neurodegenerative disorders. Alternative splicing results in multiple transcript variants. A read-through transcript composed of the upstream SPECC1L (sperm antigen with calponin homology and coiled-coil domains 1-like) and ADORA2A (adenosine A2a receptor) gene sequence has been identified, but it is thought to be non-coding.

Aliases: A2aR, RDC8, ADORA2

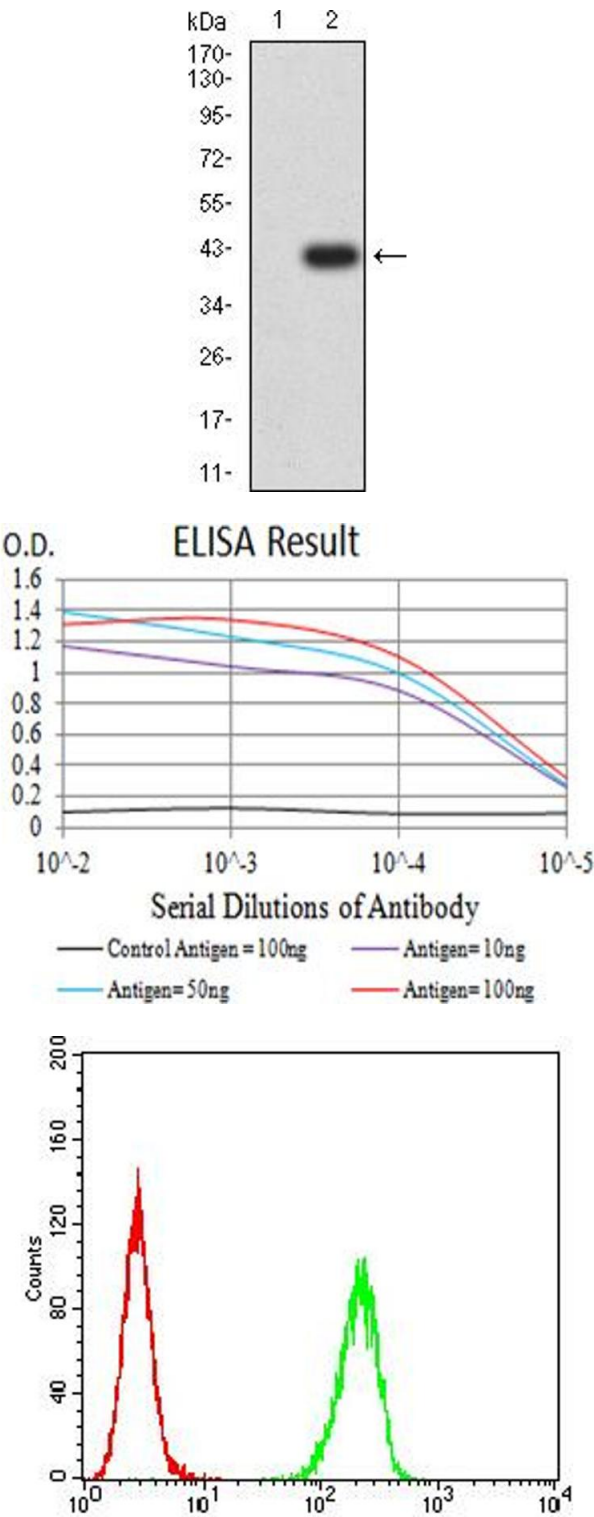
Molecular Weight:	44.7 kDa
Gene ID:	135
HGNC:	135
Pathways:	Neurotrophin Signaling Pathway , cAMP Metabolic Process , Synaptic Membrane , Feeding Behaviour , Cancer Immune Checkpoints

Application Details

Application Notes:	ELISA: 1:10000, WB: 1:500 - 1:2000, ICC: 1:100 - 1:500, FCM: 1:200 - 1:400, IHC: N/A
Restrictions:	For Research Use only

Handling

Format:	Liquid
Buffer:	Purified antibody in PBS with 0.05 % sodium azide
Preservative:	Sodium azide
Precaution of Use:	This product contains Sodium azide: a POISONOUS AND HAZARDOUS SUBSTANCE which should be handled by trained staff only.
Storage:	4 °C/-20 °C
Storage Comment:	4°C, -20°C for long term storage



Western Blotting

Image 1. Western blot analysis using ADORA2A mAb against HEK293 (1) and ADORA2A (AA: 274-412)-hlgGfc transfected HEK293 (2) cell lysate.

ELISA

Image 2. Black line: Control Antigen (100 ng),Purple line: Antigen (10 ng), Blue line: Antigen (50 ng), Red line:Antigen (100 ng)

Flow Cytometry

Image 3. Flow cytometric analysis of Hela cells using ADORA2A mouse mAb (green) and negative control (red).

Please check the [product details page](#) for more images. Overall 5 images are available for ABIN5611128.