

Datasheet for ABIN5611136
anti-CSF3R antibody (AA 25-187)



[Go to Product page](#)

6 Images

Overview

Quantity:	100 µL
Target:	CSF3R
Binding Specificity:	AA 25-187
Reactivity:	Human
Host:	Mouse
Clonality:	Monoclonal
Conjugate:	This CSF3R antibody is un-conjugated
Application:	Western Blotting (WB), ELISA, Immunohistochemistry (IHC), Flow Cytometry (FACS)

Product Details

Purpose:	CD114 Antibody
Immunogen:	Purified recombinant fragment of human CD114 (AA: 25-187) expressed in E. Coli.
Clone:	8F8B12
Isotype:	IgG1
Purification:	Purified antibody

Target Details

Target:	CSF3R
Alternative Name:	CD114 (CSF3R Products)
Background:	Description: The protein encoded by this gene is the receptor for colony stimulating factor 3, a

Target Details

cytokine that controls the production, differentiation, and function of granulocytes. The encoded protein, which is a member of the family of cytokine receptors, may also function in some cell surface adhesion or recognition processes. Alternatively spliced transcript variants have been described. Mutations in this gene are a cause of Kostmann syndrome, also known as severe congenital neutropenia.

Aliases: CSF3R, SCN7, GCSFR

Molecular Weight: 92.2kDa

Gene ID: 1441

HGNC: 1441

UniProt: [Q99062](#)

Application Details

Application Notes: ELISA: 1/10000
FCM: 1/200 - 1/400

Restrictions: For Research Use only

Handling

Format: Liquid

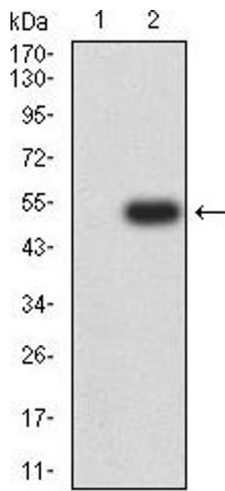
Buffer: Purified antibody in PBS with 0.05 % sodium azide.

Preservative: Sodium azide

Precaution of Use: This product contains Sodium azide: a POISONOUS AND HAZARDOUS SUBSTANCE which should be handled by trained staff only.

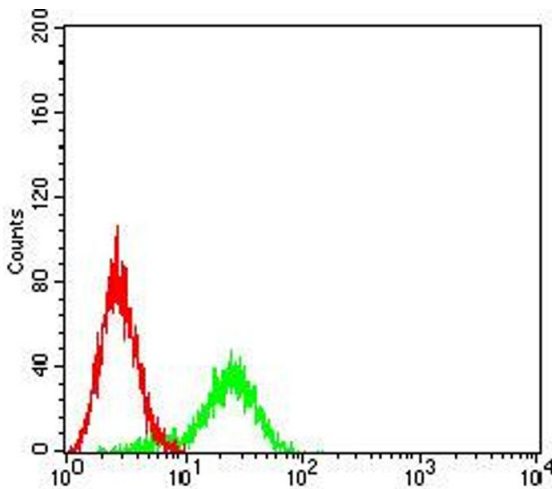
Storage: 4 °C, -20 °C

Storage Comment: Store at 4°C short term. Aliquot and store at -20°C long term. Avoid freeze/thaw cycles.



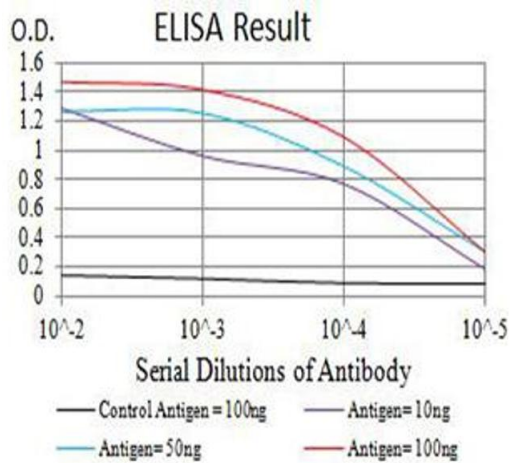
Western Blotting

Image 1. Western blot analysis using CD114 mAb against HEK293 (1) and CD114 (AA: extra 25-187)-hlgGFc transfected HEK293 (2) cell lysate.



Flow Cytometry

Image 2. Flow cytometric analysis of Ramos cells using CD114 mouse mAb (green) and negative control (red).



ELISA

Image 3. Black line: Control Antigen (100 ng), Purple line: Antigen (10 ng), Blue line: Antigen (50 ng), Red line: Antigen (100 ng)

Please check the [product details page](#) for more images. Overall 6 images are available for ABIN5611136.