

Datasheet for ABIN5611149
anti-PD-1 antibody (AA 21-170)[Go to Product page](#)

4 Images

Overview

Quantity:	0.1 mg
Target:	PD-1 (PDCD1)
Binding Specificity:	AA 21-170
Reactivity:	Human
Host:	Mouse
Clonality:	Monoclonal
Application:	Flow Cytometry (FACS), Western Blotting (WB), Immunohistochemistry (IHC), ELISA, Immunocytochemistry (ICC), Neutralization (Neut)

Product Details

Immunogen:	Purified recombinant fragment of human PD1 (AA: extra 21-170) expressed in HEK293 cells.
Clone:	3E12A10
Isotype:	IgG2a
Purification:	purified

Target Details

Target:	PD-1 (PDCD1)
Alternative Name:	PD1 (PDCD1 Products)
Background:	Description: This gene encodes a cell surface membrane protein of the immunoglobulin superfamily. This protein is expressed in pro-B-cells and is thought to play a role in their differentiation. In mice, expression of this gene is induced in the thymus when anti-CD3

Target Details

antibodies are injected and large numbers of thymocytes undergo apoptosis. Mice deficient for this gene bred on a BALB/c background developed dilated cardiomyopathy and died from congestive heart failure. These studies suggest that this gene product may also be important in T cell function and contribute to the prevention of autoimmune diseases.

Aliases: PDCD1, PD-1, CD279, SLEB2, hPD-1, hPD-I, hSLE1

Molecular Weight: 31.6KD

Gene ID: 5133

HGNC: 5133

Pathways: [Cancer Immune Checkpoints](#)

Application Details

Application Notes: ELISA: 1:10000, WB: 1:500 - 1:2000, ICC: 1:200 - 1:1000, FCM: 1:200 - 1:400, IHC: N/A

Restrictions: For Research Use only

Handling

Format: Liquid

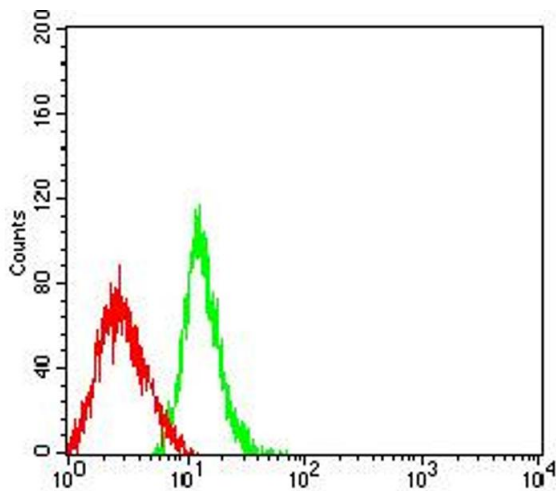
Buffer: Purified antibody in PBS with 0.05 % sodium azide

Preservative: Sodium azide

Precaution of Use: This product contains Sodium azide: a POISONOUS AND HAZARDOUS SUBSTANCE which should be handled by trained staff only.

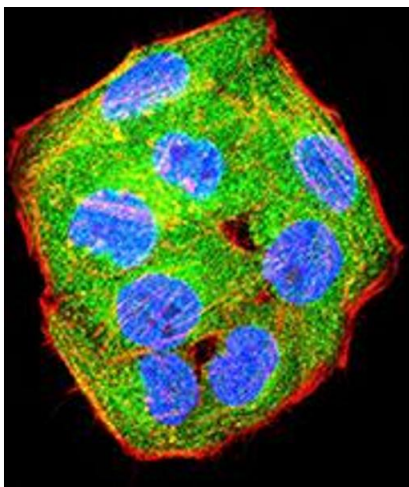
Storage: 4 °C/-20 °C

Storage Comment: 4°C, -20°C for long term storage



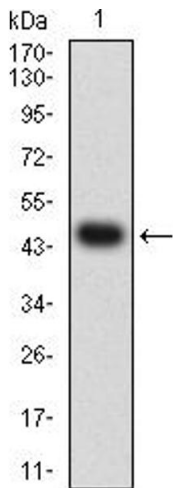
Flow Cytometry

Image 1. Flow cytometric analysis of HL-60 cells using PD1 mouse mAb (green) and negative control (red).



Immunofluorescence

Image 2. Immunofluorescence analysis of Hela cells using PD1 mouse mAb (green). Blue: DRAQ5 fluorescent DNA dye. Red: Actin filaments have been labeled with Alexa Fluor- 555 phalloidin. Secondary antibody from Fisher (Cat#: 35503)



Western Blotting

Image 3. Western blot analysis using PD1 mAb against human PD1 (AA: extra 21-170) recombinant protein. (Expected MW is 46.6 kDa)

Please check the [product details page](#) for more images. Overall 4 images are available for ABIN5611149.