



[Go to Product page](#)

Datasheet for ABIN5611152
anti-CD56 antibody (AA 568-708)

4 Images

Overview

Quantity:	0.1 mg
Target:	CD56 (NCAM1)
Binding Specificity:	AA 568-708
Reactivity:	Human, Mouse
Host:	Mouse
Clonality:	Monoclonal
Application:	Flow Cytometry (FACS), Western Blotting (WB), Immunohistochemistry (IHC), ELISA, Immunocytochemistry (ICC), Neutralization (Neut)

Product Details

Immunogen:	Purified recombinant fragment of human *** (AA: 568-708) expressed in E. coli.
Clone:	1F6F10
Isotype:	IgG1
Purification:	purified

Target Details

Target:	CD56 (NCAM1)
Alternative Name:	NCAM1 (NCAM1 Products)
Background:	Description: This gene encodes a cell adhesion protein which is a member of the immunoglobulin superfamily. The encoded protein is involved in cell-to-cell interactions as well as cell-matrix interactions during development and differentiation. The encoded protein has

Target Details

been shown to be involved in development of the nervous system, and for cells involved in the expansion of T cells and dendritic cells which play an important role in immune surveillance.

Alternative splicing results in multiple transcript variants.

Aliases: CD56, NCAM, MSK39

Molecular Weight: 94.6 kDa

Gene ID: 4684

HGNC: 4684

Application Details

Application Notes: ELISA: 1:10000, WB: 1:500 - 1:2000, ICC: N/A, FCM: N/A, IHC: N/A

Restrictions: For Research Use only

Handling

Format: Liquid

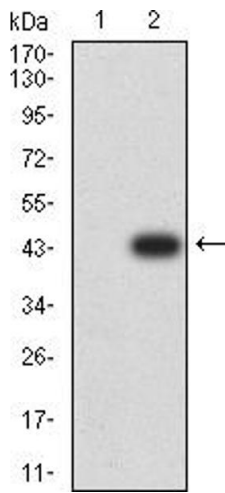
Buffer: Purified antibody in PBS with 0.05 % sodium azide

Preservative: Sodium azide

Precaution of Use: This product contains Sodium azide: a POISONOUS AND HAZARDOUS SUBSTANCE which should be handled by trained staff only.

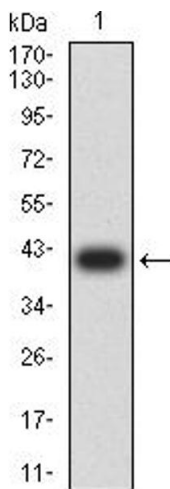
Storage: 4 °C/-20 °C

Storage Comment: 4°C, -20°C for long term storage



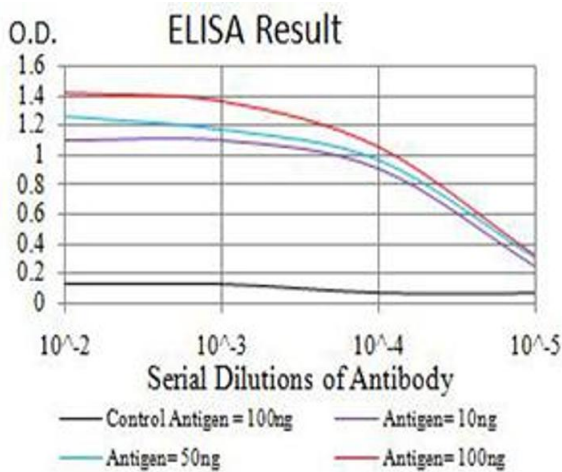
Western Blotting

Image 1. Western blot analysis using NCAM1 mAb against HEK293 (1) and NCAM1 (AA: 568-708)-hlgGFc transfected HEK293 (2) cell lysate.



Western Blotting

Image 2. Western blot analysis using NCAM1 mAb against human NCAM1 (AA: 568-708) recombinant protein. (Expected MW is 40.1 kDa)



ELISA

Image 3. Black line: Control Antigen (100 ng), Purple line: Antigen (10 ng), Blue line: Antigen (50 ng), Red line: Antigen (100 ng)

Please check the [product details page](#) for more images. Overall 4 images are available for ABIN5611152.