

Datasheet for ABIN5611159  
**anti-GRM2 antibody (AA 414-558)**



[Go to Product page](#)

5 Images

## Overview

Quantity:	100 µL
Target:	GRM2
Binding Specificity:	AA 414-558
Reactivity:	Human
Host:	Mouse
Clonality:	Monoclonal
Conjugate:	This GRM2 antibody is un-conjugated
Application:	ELISA, Western Blotting (WB), Flow Cytometry (FACS)

## Product Details

Purpose:	GRM2 Antibody
Immunogen:	Purified recombinant fragment of human GRM2 (AA: 414-558) expressed in E. Coli.
Clone:	6E4F6
Isotype:	IgG1
Purification:	Purified antibody

## Target Details

Target:	GRM2
Alternative Name:	GRM2 ( <a href="#">GRM2 Products</a> )
Background:	Description: L-glutamate is the major excitatory neurotransmitter in the central nervous system

## Target Details

---

and activates both ionotropic and metabotropic glutamate receptors. Glutamatergic neurotransmission is involved in most aspects of normal brain function and can be perturbed in many neuropathologic conditions. The metabotropic glutamate receptors are a family of G protein-coupled receptors, that have been divided into 3 groups on the basis of sequence homology, putative signal transduction mechanisms, and pharmacologic properties. Group I includes GRM1 and GRM5 and these receptors have been shown to activate phospholipase C. Group II includes GRM2 and GRM3 while Group III includes GRM4, GRM6, GRM7 and GRM8. Group II and III receptors are linked to the inhibition of the cyclic AMP cascade but differ in their agonist selectivities. Several transcript variants encoding different isoforms have been found for this gene.

Aliases: GLUR2, mGlu2, GPRC1B, MGLUR2

Molecular Weight:	95.6kDa
Gene ID:	2912
HGNC:	2912
UniProt:	<a href="#">Q14416</a>
Pathways:	<a href="#">cAMP Metabolic Process</a> , <a href="#">Dicarboxylic Acid Transport</a>

## Application Details

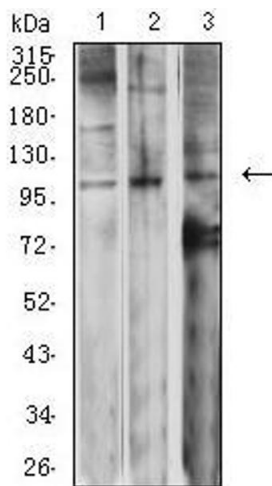
---

Application Notes:	ELISA: 1/10000 FCM: 1/200 - 1/400
Restrictions:	For Research Use only

## Handling

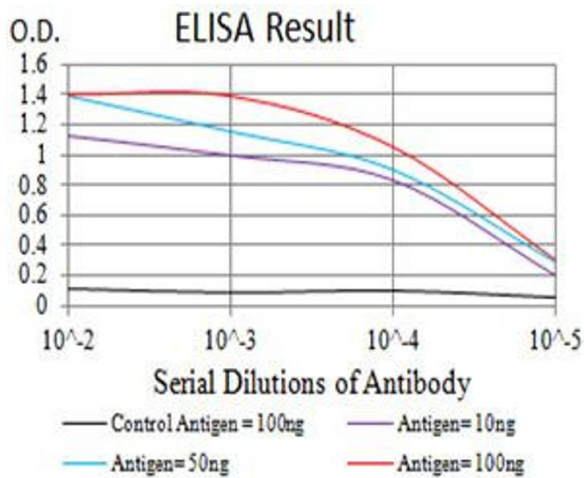
---

Format:	Liquid
Buffer:	Purified antibody in PBS with 0.05 % sodium azide.
Preservative:	Sodium azide
Precaution of Use:	This product contains Sodium azide: a POISONOUS AND HAZARDOUS SUBSTANCE which should be handled by trained staff only.
Storage:	4 °C,-20 °C
Storage Comment:	Store at 4°C short term. Aliquot and store at -20°C long term. Avoid freeze/thaw cycles.



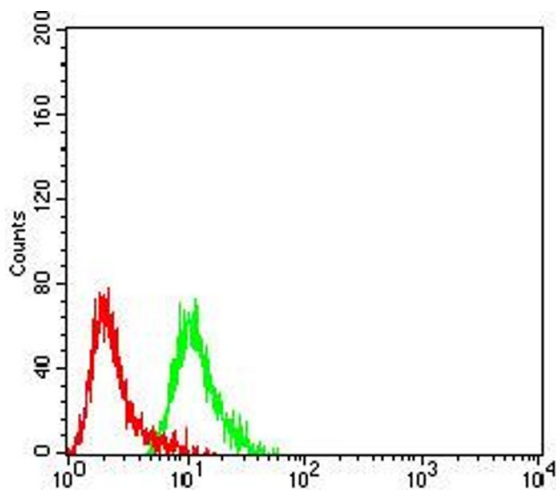
### Western Blotting

**Image 1.** Western blot analysis using GRM2 mouse mAb against SK-N-SH (1), Jurkat (2), and SW620 (3) cell lysate.



### ELISA

**Image 2.** Black line: Control Antigen (100 ng), Purple line: Antigen (10 ng), Blue line: Antigen (50 ng), Red line: Antigen (100 ng)



### Flow Cytometry

**Image 3.** Flow cytometric analysis of SK-N-SH cells using GRM2 mouse mAb (green) and negative control (red).

Please check the [product details page](#) for more images. Overall 5 images are available for ABIN5611159.