

Datasheet for ABIN5611162  
**anti-GRM8 antibody (AA 440-583)**

## 5 Images

[Go to Product page](#)

## Overview

Quantity:	0.1 mg
Target:	GRM8
Binding Specificity:	AA 440-583
Reactivity:	Human
Host:	Mouse
Clonality:	Monoclonal
Application:	Western Blotting (WB), ELISA, Immunohistochemistry (IHC), Immunocytochemistry (ICC), Flow Cytometry (FACS), Neutralization (Neut)

## Product Details

Immunogen:	Purified recombinant fragment of human GRM8 (AA: extra 440-583) expressed in E. coli.
Clone:	4C1C1
Isotype:	IgG1
Purification:	purified

## Target Details

Target:	GRM8
Alternative Name:	GRM8 ( <a href="#">GRM8 Products</a> )
Background:	Description: L-glutamate is the major excitatory neurotransmitter in the central nervous system and activates both ionotropic and metabotropic glutamate receptors. Glutamatergic neurotransmission is involved in most aspects of normal brain function and can be perturbed in

## Target Details

many neuropathologic conditions. The metabotropic glutamate receptors are a family of G protein-coupled receptors, that have been divided into 3 groups on the basis of sequence homology, putative signal transduction mechanisms, and pharmacologic properties. Group I includes GRM1 and GRM5 and these receptors have been shown to activate phospholipase C. Group II includes GRM2 and GRM3 while Group III includes GRM4, GRM6, GRM7 and GRM8. Group II and III receptors are linked to the inhibition of the cyclic AMP cascade but differ in their agonist selectivities. Alternatively spliced transcript variants encoding different isoforms have been described for this gene.

Aliases: GLUR8, mGlu8, GPRC1H, MGLUR8

Molecular Weight:	101.7 kDa
-------------------	-----------

Gene ID:	2918
----------	------

HGNC:	2918
-------	------

Pathways:	<a href="#">cAMP Metabolic Process</a> , <a href="#">Synaptic Membrane</a>
-----------	--

## Application Details

Application Notes:	ELISA: 1:10000, WB: 1:500 - 1:2000, ICC: N/A, FCM: 1:200 - 1:400, IHC: N/A
--------------------	--

Restrictions:	For Research Use only
---------------	-----------------------

## Handling

Format:	Liquid
---------	--------

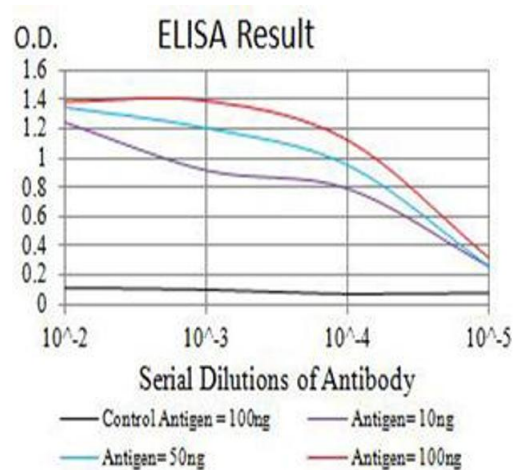
Buffer:	Purified antibody in PBS with 0.05 % sodium azide
---------	---

Preservative:	Sodium azide
---------------	--------------

Precaution of Use:	This product contains Sodium azide: a POISONOUS AND HAZARDOUS SUBSTANCE which should be handled by trained staff only.
--------------------	--

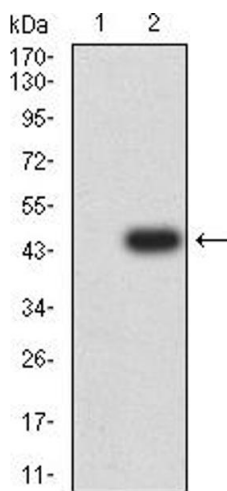
Storage:	4 °C/-20 °C
----------	-------------

Storage Comment:	4°C, -20°C for long term storage
------------------	----------------------------------



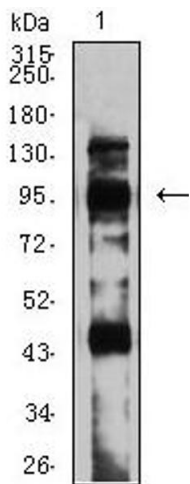
**ELISA**

**Image 1.** Black line: Control Antigen (100 ng),Purple line: Antigen (10 ng), Blue line: Antigen (50 ng), Red line:Antigen (100 ng)



**Western Blotting**

**Image 2.** Western blot analysis using GRM8 mAb against HEK293 (1) and GRM8 (AA: extra 440-583)-hlgGfc transfected HEK293 (2) cell lysate.



**Western Blotting**

**Image 3.** Western blot analysis using GRM8 mouse mAb against C6 (1) cell lysate.

Please check the [product details page](#) for more images. Overall 5 images are available for ABIN5611162.