



[Go to Product page](#)

Datasheet for ABIN561117
anti-GPS1 antibody (AA 390-491)

1 Image

Overview

Quantity:	100 µg
Target:	GPS1
Binding Specificity:	AA 390-491
Reactivity:	Human
Host:	Mouse
Clonality:	Monoclonal
Conjugate:	This GPS1 antibody is un-conjugated
Application:	ELISA

Product Details

Purpose:	Mouse monoclonal antibody raised against a partial recombinant GPS1.
Immunogen:	GPS1 (AAH00155, 390 a.a. ~ 491 a.a) partial recombinant protein with GST tag. MW of the GST tag alone is 26 KDa.
Sequence:	AAAFNTTVAA LEDELTLIL EGLISARVDS HSKILYARDV DQRSTTFEKS LLMGKEFQRR AKAMMLRAAV LRNQIHKVSP PREGSQGELT PANSQSRMST NM
Clone:	1E8
Isotype:	IgG2b
Cross-Reactivity:	Human
Characteristics:	Antibody Reactive Against Recombinant Protein.

Target Details

Target:	GPS1
Alternative Name:	GPS1 (GPS1 Products)
Background:	Full Gene Name: G protein pathway suppressor 1 Synonyms: COPS1,CSN1,MGC71287
Gene ID:	2873
Pathways:	Cell Division Cycle

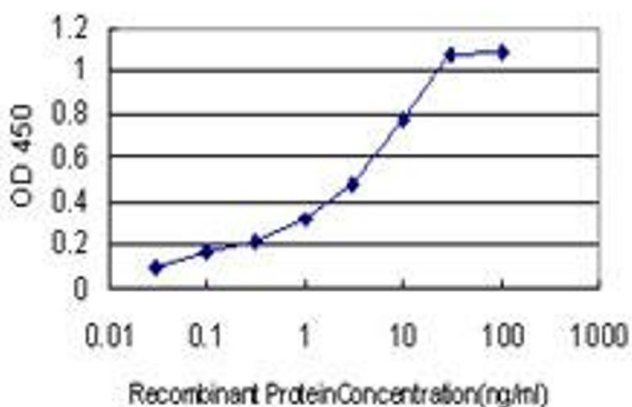
Application Details

Application Notes:	Optimal working dilution should be determined by the investigator.
Restrictions:	For Research Use only

Handling

Buffer:	In 1x PBS, pH 7.4
Handling Advice:	Aliquot to avoid repeated freezing and thawing.
Storage:	-20 °C
Storage Comment:	Store at -20°C or lower. Aliquot to avoid repeated freezing and thawing.

Images



ELISA

Image 1. Detection limit for recombinant GST tagged GPS1 is approximately 1ng/ml as a capture antibody.