

Datasheet for ABIN5611175

**anti-Metabotropic Glutamate Receptor 1 antibody (AA 387-486)**[Go to Product page](#)**3** Images

## Overview

Quantity:	0.1 mg
Target:	Metabotropic Glutamate Receptor 1 (GRM1)
Binding Specificity:	AA 387-486
Reactivity:	Human
Host:	Mouse
Clonality:	Monoclonal
Application:	Western Blotting (WB), ELISA, Immunohistochemistry (IHC), Immunocytochemistry (ICC), Flow Cytometry (FACS), Neutralization (Neut)

## Product Details

Immunogen:	Purified recombinant fragment of human GRM1 (AA: extra 387-486) expressed in E. coli.
Clone:	5E12D8
Isotype:	IgG1
Purification:	purified

## Target Details

Target:	Metabotropic Glutamate Receptor 1 (GRM1)
Alternative Name:	GRM1 ( <a href="#">GRM1 Products</a> )
Background:	Description: This gene encodes a metabotropic glutamate receptor that functions by activating phospholipase C. L-glutamate is the major excitatory neurotransmitter in the central nervous system and activates both ionotropic and metabotropic glutamate receptors. Glutamatergic

## Target Details

neurotransmission is involved in most aspects of normal brain function and can be perturbed in many neuropathologic conditions. The canonical alpha isoform of the encoded protein is a disulfide-linked homodimer whose activity is mediated by a G-protein-coupled phosphatidylinositol-calcium second messenger system. This gene may be associated with many disease states, including schizophrenia, bipolar disorder, depression, and breast cancer. Alternative splicing results in multiple transcript variants encoding different isoforms.

Aliases: MGLU1, GPRC1A, MGLUR1, SCAR13, PPP1R85

Molecular Weight:	132.4 kDa
-------------------	-----------

Gene ID:	2911
----------	------

HGNC:	2911
-------	------

## Application Details

Application Notes:	ELISA: 1:10000, WB: 1:500 - 1:2000, ICC: N/A, FCM: N/A, IHC: N/A
--------------------	--

Restrictions:	For Research Use only
---------------	-----------------------

## Handling

Format:	Liquid
---------	--------

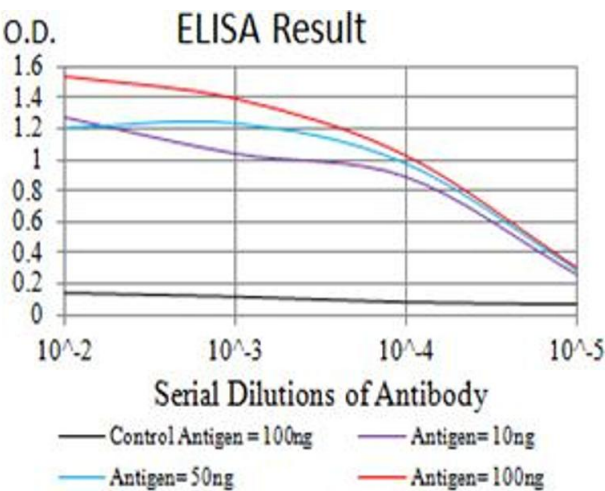
Buffer:	Purified antibody in PBS with 0.05 % sodium azide
---------	---

Preservative:	Sodium azide
---------------	--------------

Precaution of Use:	This product contains Sodium azide: a POISONOUS AND HAZARDOUS SUBSTANCE which should be handled by trained staff only.
--------------------	--

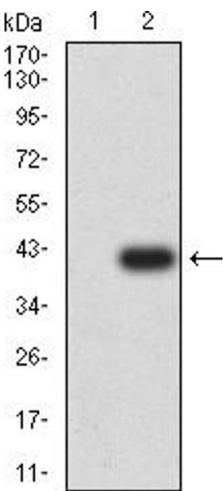
Storage:	4 °C/-20 °C
----------	-------------

Storage Comment:	4°C, -20°C for long term storage
------------------	----------------------------------



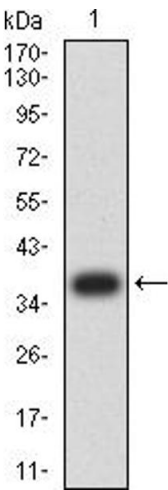
**ELISA**

**Image 1.** Black line: Control Antigen (100 ng),Purple line: Antigen (10 ng), Blue line: Antigen (50 ng), Red line:Antigen (100 ng)



**Western Blotting**

**Image 2.** Western blot analysis using GRM1 mAb against HEK293 (1) and GRM1 (AA: 387-486)-hlgGFc transfected HEK293 (2) cell lysate.



**Western Blotting**

**Image 3.** Western blot analysis using GRM1 mAb against human GRM1 (AA: 387-486) recombinant protein. (Expected MW is 37.1 kDa)