

Datasheet for ABIN5611176

anti-Metabotropic Glutamate Receptor 3 antibody (AA 433-576)[Go to Product page](#)**6** Images

Overview

Quantity:	0.1 mg
Target:	Metabotropic Glutamate Receptor 3 (GRM3)
Binding Specificity:	AA 433-576
Reactivity:	Human
Host:	Mouse
Clonality:	Monoclonal
Application:	Western Blotting (WB), ELISA, Immunohistochemistry (IHC), Flow Cytometry (FACS), Immunocytochemistry (ICC), Neutralization (Neut)

Product Details

Immunogen:	Purified recombinant fragment of human GRM3 (AA: extra 433-576) expressed in E. coli.
Clone:	6H10C3
Isotype:	IgG1
Purification:	purified

Target Details

Target:	Metabotropic Glutamate Receptor 3 (GRM3)
Alternative Name:	GRM3 (GRM3 Products)
Background:	Description: L-glutamate is the major excitatory neurotransmitter in the central nervous system and activates both ionotropic and metabotropic glutamate receptors. Glutamatergic neurotransmission is involved in most aspects of normal brain function and can be perturbed in

Target Details

many neuropathologic conditions. The metabotropic glutamate receptors are a family of G protein-coupled receptors, that have been divided into 3 groups on the basis of sequence homology, putative signal transduction mechanisms, and pharmacologic properties. Group I includes GRM1 and GRM5 and these receptors have been shown to activate phospholipase C. Group II includes GRM2 and GRM3 while Group III includes GRM4, GRM6, GRM7 and GRM8. Group II and III receptors are linked to the inhibition of the cyclic AMP cascade but differ in their agonist selectivities.

Aliases: GLUR3, mGlu3, GPRC1C, MGLUR3

Molecular Weight: 99 kDa

Gene ID: 2913

HGNC: 2913

Pathways: [cAMP Metabolic Process](#), [Synaptic Membrane](#)

Application Details

Application Notes: ELISA: 1:10000, WB: 1:500 - 1:2000, ICC: N/A, FCM: 1:200 - 1:400, IHC: 1:200 - 1:1000

Restrictions: For Research Use only

Handling

Format: Liquid

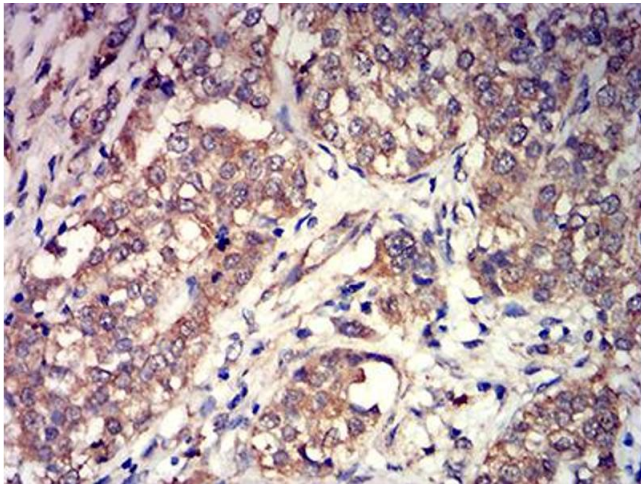
Buffer: Purified antibody in PBS with 0.05 % sodium azide

Preservative: Sodium azide

Precaution of Use: This product contains Sodium azide: a POISONOUS AND HAZARDOUS SUBSTANCE which should be handled by trained staff only.

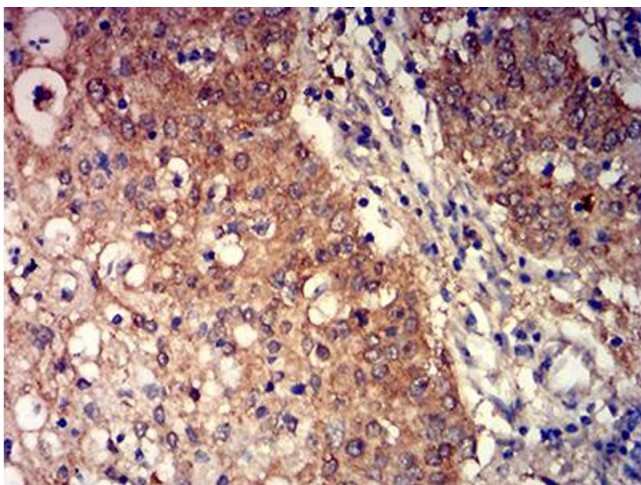
Storage: 4 °C/-20 °C

Storage Comment: 4°C, -20°C for long term storage



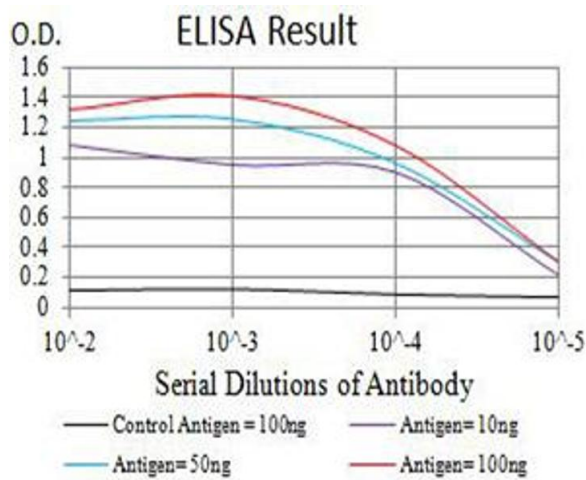
Immunohistochemistry

Image 1. Immunohistochemical analysis of paraffin-embedded bladder cancer tissues using GRM3 mouse mAb with DAB staining.



Immunohistochemistry

Image 2. Immunohistochemical analysis of paraffin-embedded stomach cancer tissues using GRM3 mouse mAb with DAB staining.



ELISA

Image 3. Black line: Control Antigen (100 ng),Purple line: Antigen (10 ng), Blue line: Antigen (50 ng), Red line:Antigen (100 ng)

Please check the [product details page](#) for more images. Overall 6 images are available for ABIN5611176.