

Datasheet for ABIN5611180

anti-Metabotropic Glutamate Receptor 6 antibody (AA 480-585)



[Go to Product page](#)

4 Images

Overview

Quantity:	0.1 mg
Target:	Metabotropic Glutamate Receptor 6 (GRM6)
Binding Specificity:	AA 480-585
Reactivity:	Human
Host:	Mouse
Clonality:	Monoclonal
Application:	Western Blotting (WB), ELISA, Immunohistochemistry (IHC), Immunocytochemistry (ICC), Flow Cytometry (FACS), Neutralization (Neut)

Product Details

Immunogen:	Purified recombinant fragment of human GRM6 (AA: extra 480-585) expressed in E. coli.
Clone:	7D9C9
Isotype:	IgG1
Purification:	purified

Target Details

Target:	Metabotropic Glutamate Receptor 6 (GRM6)
Alternative Name:	GRM6 (GRM6 Products)
Background:	Description: L-glutamate is the major excitatory neurotransmitter in the central nervous system and activates both ionotropic and metabotropic glutamate receptors. Glutamatergic neurotransmission is involved in most aspects of normal brain function and can be perturbed in

Target Details

many neuropathologic conditions. The metabotropic glutamate receptors are a family of G protein-coupled receptors, that have been divided into 3 groups on the basis of sequence homology, putative signal transduction mechanisms, and pharmacologic properties. Group I includes GRM1 and GRM5 and these receptors have been shown to activate phospholipase C. Group II includes GRM2 and GRM3 while Group III includes GRM4, GRM6, GRM7 and GRM8. Group II and III receptors are linked to the inhibition of the cyclic AMP cascade but differ in their agonist selectivities.

Aliases: mGlu6, CSNB1B, GPRC1F, MGLUR6

Molecular Weight:	95.5 kDa
-------------------	----------

Gene ID:	2916
----------	------

HGNC:	2916
-------	------

Application Details

Application Notes:	ELISA: 1:10000, WB: 1:500 - 1:2000, ICC: N/A, FCM: 1:200 - 1:400, IHC: N/A
--------------------	--

Restrictions:	For Research Use only
---------------	-----------------------

Handling

Format:	Liquid
---------	--------

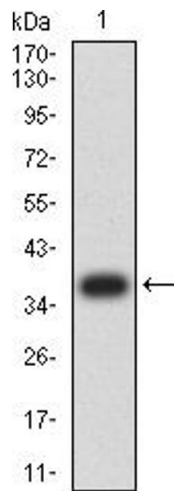
Buffer:	Purified antibody in PBS with 0.05 % sodium azide
---------	---

Preservative:	Sodium azide
---------------	--------------

Precaution of Use:	This product contains Sodium azide: a POISONOUS AND HAZARDOUS SUBSTANCE which should be handled by trained staff only.
--------------------	--

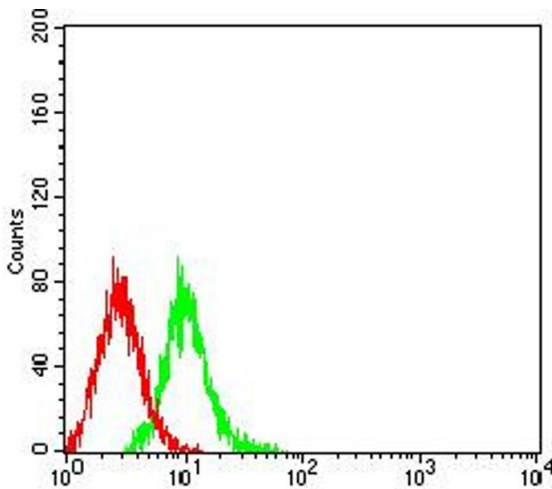
Storage:	4 °C/-20 °C
----------	-------------

Storage Comment:	4°C, -20°C for long term storage
------------------	----------------------------------



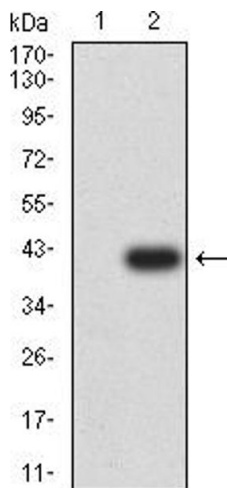
Western Blotting

Image 1. Western blot analysis using GRM6 mAb against human GRM6 (AA: extra 480-585) recombinant protein. (Expected MW is 37.5 kDa)



Flow Cytometry

Image 2. Flow cytometric analysis of K562 cells using GRM6 mouse mAb (green) and negative control (red).



Western Blotting

Image 3. Western blot analysis using GRM6 mAb against HEK293 (1) and GRM6 (AA: extra 480-585)-hlgGFc transfected HEK293 (2) cell lysate.

Please check the [product details page](#) for more images. Overall 4 images are available for ABIN5611180.