

Datasheet for ABIN5611200
anti-AMY1A antibody (AA 172-284)

5 Images

[Go to Product page](#)

Overview

Quantity:	0.1 mg
Target:	AMY1A
Binding Specificity:	AA 172-284
Reactivity:	Human, Rat
Host:	Mouse
Clonality:	Monoclonal
Application:	Western Blotting (WB), ELISA, Immunohistochemistry (IHC), Flow Cytometry (FACS), Immunocytochemistry (ICC), Neutralization (Neut)

Product Details

Immunogen:	Purified recombinant fragment of human AMY1A (AA: 172-284) expressed in E. coli.
Clone:	5G6F7
Isotype:	IgG1
Purification:	purified

Target Details

Target:	AMY1A
Alternative Name:	AMY1A (AMY1A Products)
Background:	Description: Amylases are secreted proteins that hydrolyze 1,4-alpha-glucoside bonds in oligosaccharides and polysaccharides, and thus catalyze the first step in digestion of dietary starch and glycogen. The human genome has a cluster of several amylase genes that are

Target Details

expressed at high levels in either salivary gland or pancreas. This gene encodes an amylase isoenzyme produced by the salivary gland. Alternative splicing results in multiple transcript variants encoding the same protein.

Aliases: AMY1

Molecular Weight: 57.8 kDa

Gene ID: 276

HGNC: 276

Application Details

Application Notes: ELISA: 1:10000, WB: 1:500 - 1:2000, ICC: N/A, FCM: 1:200 - 1:400, IHC: N/A

Restrictions: For Research Use only

Handling

Format: Liquid

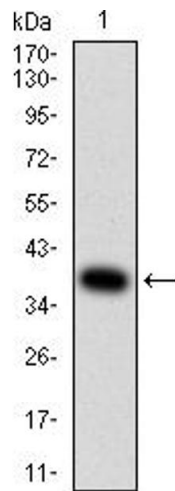
Buffer: Purified antibody in PBS with 0.05 % sodium azide

Preservative: Sodium azide

Precaution of Use: This product contains Sodium azide: a POISONOUS AND HAZARDOUS SUBSTANCE which should be handled by trained staff only.

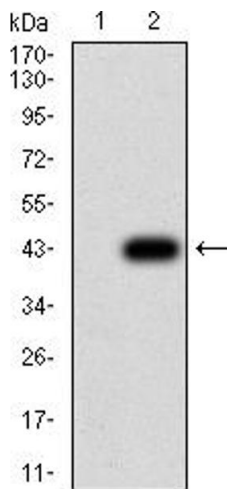
Storage: 4 °C/-20 °C

Storage Comment: 4°C, -20°C for long term storage



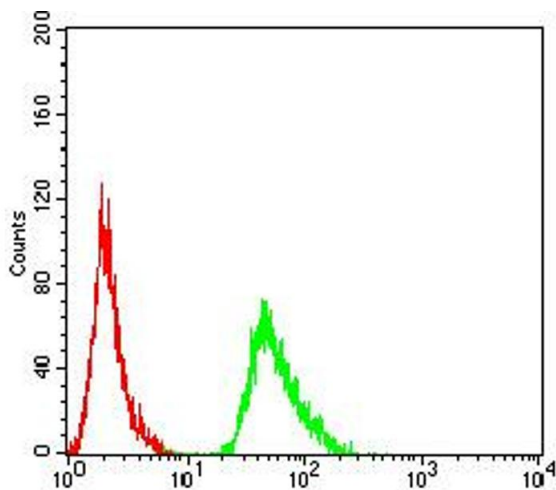
Western Blotting

Image 1. Western blot analysis using AMY1A mAb against human AMY1A (AA: 172-284) recombinant protein. (Expected MW is 38.7 kDa)



Western Blotting

Image 2. Western blot analysis using AMY1A mAb against HEK293 (1) and AMY1A (AA: 172-284)-hlgGFc transfected HEK293 (2) cell lysate.



Flow Cytometry

Image 3. Flow cytometric analysis of MCF-7 cells using AMY1A mouse mAb (green) and negative control (red).

Please check the [product details page](#) for more images. Overall 5 images are available for ABIN5611200.