

Datasheet for ABIN5611202

anti-CCR5 antibody**5** Images[Go to Product page](#)

Overview

| | |
|--------------|---|
| Quantity: | 0.1 mg |
| Target: | CCR5 |
| Reactivity: | Human |
| Host: | Mouse |
| Clonality: | Monoclonal |
| Conjugate: | This CCR5 antibody is un-conjugated |
| Application: | Western Blotting (WB), ELISA, Flow Cytometry (FACS), Immunohistochemistry (IHC), Immunocytochemistry (ICC), Neutralization (Neut) |

Product Details

| | |
|---------------|--|
| Immunogen: | Purified recombinant fragment of human CD195 (AA: extra mix) expressed in E. coli. |
| Clone: | 6H3D5 |
| Isotype: | IgG1 |
| Purification: | purified |

Target Details

| | |
|-------------------|---|
| Target: | CCR5 |
| Alternative Name: | CD195 (CCR5 Products) |
| Background: | Description: This gene encodes a member of the beta chemokine receptor family, which is predicted to be a seven transmembrane protein similar to G protein-coupled receptors. This protein is expressed by T cells and macrophages, and is known to be an important co-receptor |

Target Details

for macrophage-tropic virus, including HIV, to enter host cells. Defective alleles of this gene have been associated with the HIV infection resistance. The ligands of this receptor include monocyte chemoattractant protein 2 (MCP-2), macrophage inflammatory protein 1 alpha (MIP-1 alpha), macrophage inflammatory protein 1 beta (MIP-1 beta) and regulated on activation normal T expressed and secreted protein (RANTES). Expression of this gene was also detected in a promyeloblastic cell line, suggesting that this protein may play a role in granulocyte lineage proliferation and differentiation. This gene is located at the chemokine receptor gene cluster region. An allelic polymorphism in this gene results in both functional and non-functional alleles, the reference genome represents the functional allele. Two transcript variants encoding the same protein have been found for this gene.

Aliases: CCR5, CKR5, CCR-5, CKR-5, CCCKR5, CMKBR5, IDDM22, CC-CKR-5

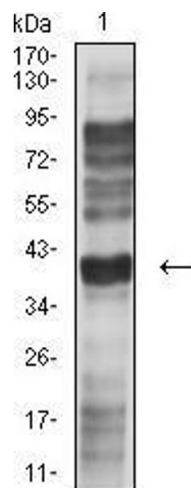
| | |
|-------------------|--|
| Molecular Weight: | 40.5 kDa |
| Gene ID: | 1234 |
| HGNC: | 1234 |
| Pathways: | Cellular Response to Molecule of Bacterial Origin , cAMP Metabolic Process , Regulation of Cell Size |

Application Details

| | |
|--------------------|--|
| Application Notes: | ELISA: 1:10000, WB: 1:500 - 1:2000, ICC: N/A, FCM: 1:200 - 1:400, IHC: N/A |
| Restrictions: | For Research Use only |

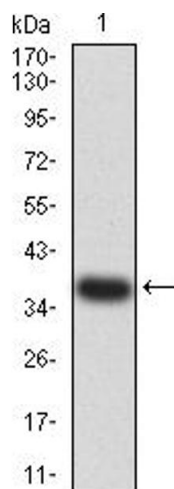
Handling

| | |
|--------------------|--|
| Format: | Liquid |
| Buffer: | Purified antibody in PBS with 0.05 % sodium azide |
| Preservative: | Sodium azide |
| Precaution of Use: | This product contains Sodium azide: a POISONOUS AND HAZARDOUS SUBSTANCE which should be handled by trained staff only. |
| Storage: | 4 °C/-20 °C |
| Storage Comment: | 4°C, -20°C for long term storage |



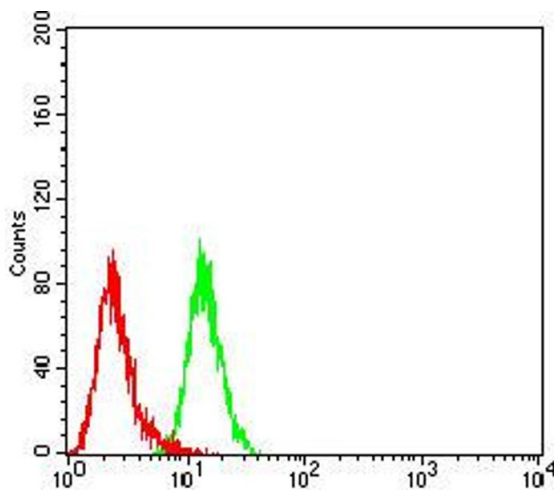
Western Blotting

Image 1. Western blot analysis using CD195 mouse mAb against L-02 (1) cell lysate.



Western Blotting

Image 2. Western blot analysis using CD195 mAb against human CD195 (AA: extra mix) recombinant protein. (Expected MW is 36.7 kDa)



Flow Cytometry

Image 3. Flow cytometric analysis of HL-60 cells using CD195 mouse mAb (green) and negative control (red).

Please check the [product details page](#) for more images. Overall 5 images are available for ABIN5611202.