

Datasheet for ABIN5611210
anti-NLRC4 antibody (pSer533)



[Go to Product page](#)

4 Images

Overview

Quantity:	100 µL
Target:	NLRC4
Binding Specificity:	pSer533
Reactivity:	Human
Host:	Rat
Clonality:	Monoclonal
Conjugate:	This NLRC4 antibody is un-conjugated
Application:	ELISA, Immunocytochemistry (ICC), Flow Cytometry (FACS)

Product Details

Purpose:	Phospho-NLRC4(Ser-533) Antibody
Immunogen:	Synthesized peptide of mouse phospho-NLRC4(Ser-533) (AA: 525-538) expressed in E. Coli.
Clone:	9A6A1
Isotype:	IgG2b
Purification:	Purified antibody

Target Details

Target:	NLRC4
Alternative Name:	NLRC4 (NLRC4 Products)
Background:	Description: NLRC4 is a cytosolic NOD (nucleotide binding and oligomerization domain)-like

Target Details

receptor (NLR) that can trigger inflammasome formation in response to bacterial flagellin, an immunodominant antigen in the intestine.

Aliases: CLAN, IPAF, CLAN1, CLANA, CLANB, CLANC, CLAND, Card12, 9530011P19Rik

Molecular Weight: 116.7kDa

Gene ID: 268973

HGNC: 268973

UniProt: [Q3UP24](#)

Pathways: [Activation of Innate immune Response](#), [Positive Regulation of Endopeptidase Activity](#), [Inflammasome](#)

Application Details

Application Notes: ELISA: 1/10000
FCM: 1/200 - 1/400
ICC: 1/200 - 1/1000

Restrictions: For Research Use only

Handling

Format: Liquid

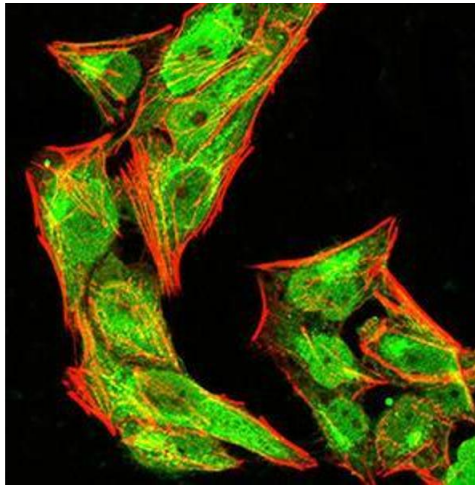
Buffer: Purified antibody in PBS with 0.05 % sodium azide.

Preservative: Sodium azide

Precaution of Use: This product contains Sodium azide: a POISONOUS AND HAZARDOUS SUBSTANCE which should be handled by trained staff only.

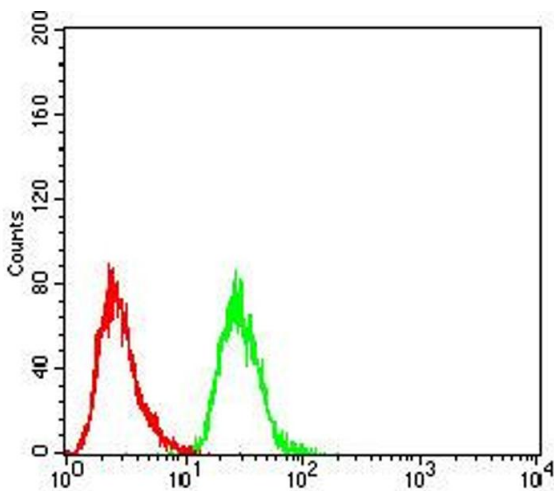
Storage: 4 °C,-20 °C

Storage Comment: Store at 4°C short term. Aliquot and store at -20°C long term. Avoid freeze/thaw cycles.



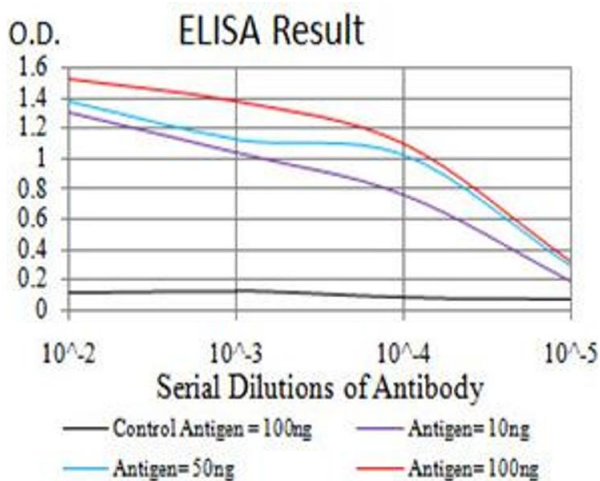
Immunofluorescence

Image 1. Immunofluorescence analysis of HeLa cells using phospho-NLRC4(Ser-533) rat mAb (green). Blue: DRAQ5 fluorescent DNA dye. Red: Actin filaments have been labeled with Alexa Fluor- 555 phalloidin. Secondary antibody from Fisher (Cat#: 35503)



Flow Cytometry

Image 2. Flow cytometric analysis of HeLa cells using phospho-NLRC4(Ser-533) rat mAb (green) and negative control (red).



ELISA

Image 3. Black line: Control Antigen (100 ng),Purple line: Antigen (10 ng), Blue line: Antigen (50 ng), Red line:Antigen (100 ng)

Please check the [product details page](#) for more images. Overall 4 images are available for ABIN5611210.