

Datasheet for ABIN5611215
anti-ATL1 antibody (AA 1-100)

3 Images

[Go to Product page](#)

Overview

Quantity:	0.1 mg
Target:	ATL1
Binding Specificity:	AA 1-100
Reactivity:	Human
Host:	Mouse
Clonality:	Monoclonal
Application:	Western Blotting (WB), ELISA, Immunohistochemistry (IHC), Immunocytochemistry (ICC), Flow Cytometry (FACS), Neutralization (Neut)

Product Details

Immunogen:	Purified recombinant fragment of human ATL1 (AA: 1-100) expressed in E. coli.
Clone:	1F6B12
Isotype:	IgG1
Purification:	purified

Target Details

Target:	ATL1
Alternative Name:	ATL1 (ATL1 Products)
Background:	Description: The protein encoded by this gene is a GTPase and a Golgi body transmembrane protein. The encoded protein can form a homotetramer and has been shown to interact with spastin and with mitogen-activated protein kinase kinase kinase 4. This protein may be

Target Details

involved in axonal maintenance as evidenced by the fact that defects in this gene are a cause of spastic paraplegia type 3. Three transcript variants encoding two different isoforms have been found for this gene.

Aliases: FSP1, GBP3, SPG3, HSN1D, SPG3A, AD-FSP, atlastin1

Molecular Weight: 63.5 kDa

Gene ID: 51062

HGNC: 51062

Application Details

Application Notes: ELISA: 1:10000, WB: 1:500 - 1:2000, ICC: N/A, FCM: N/A, IHC: N/A

Restrictions: For Research Use only

Handling

Format: Liquid

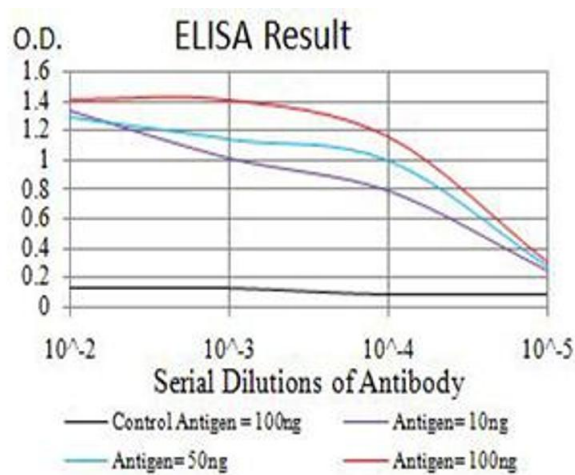
Buffer: Purified antibody in PBS with 0.05 % sodium azide

Preservative: Sodium azide

Precaution of Use: This product contains Sodium azide: a POISONOUS AND HAZARDOUS SUBSTANCE which should be handled by trained staff only.

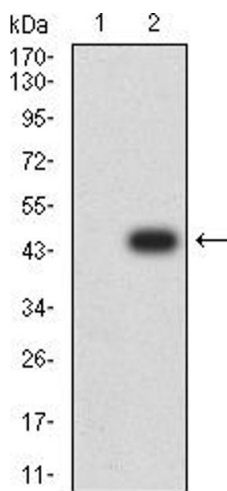
Storage: 4 °C/-20 °C

Storage Comment: 4°C, -20°C for long term storage



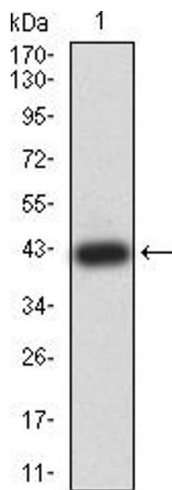
ELISA

Image 1. Black line: Control Antigen (100 ng),Purple line: Antigen (10 ng), Blue line: Antigen (50 ng), Red line:Antigen (100 ng)



Western Blotting

Image 2. Western blot analysis using ATL1 mAb against HEK293 (1) and ATL1 (AA: 1-100)-hlgGfc transfected HEK293 (2) cell lysate.



Western Blotting

Image 3. Western blot analysis using ATL1 mAb against human ATL1 (AA: 1-100) recombinant protein. (Expected MW is 41.3 kDa)