

Datasheet for ABIN5611217  
**anti-TIM3 antibody (AA 22-202)**



[Go to Product page](#)

4 Images

### Overview

Quantity:	0.1 mg
Target:	TIM3 (TIM 3)
Binding Specificity:	AA 22-202
Reactivity:	Human
Host:	Mouse
Clonality:	Monoclonal
Application:	Western Blotting (WB), Flow Cytometry (FACS), ELISA, Immunohistochemistry (IHC), Immunocytochemistry (ICC), Neutralization (Neut)

### Product Details

Immunogen:	Purified recombinant fragment of human TIM3 (AA: extra 22-202) expressed in HEK293 cells.
Clone:	7C8A7
Isotype:	IgG1
Purification:	purified

### Target Details

Target:	TIM3 (TIM 3)
Alternative Name:	TIM3 ( <a href="#">TIM 3 Products</a> )
Target Type:	Virus
Background:	Description: The protein encoded by this gene belongs to the immunoglobulin superfamily, and

## Target Details

---

TIM family of proteins. CD4-positive T helper lymphocytes can be divided into types 1 (Th1) and 2 (Th2) on the basis of their cytokine secretion patterns. Th1 cells are involved in cell-mediated immunity to intracellular pathogens and delayed-type hypersensitivity reactions, whereas, Th2 cells are involved in the control of extracellular helminthic infections and the promotion of atopic and allergic diseases. This protein is a Th1-specific cell surface protein that regulates macrophage activation, and inhibits Th1-mediated auto- and alloimmune responses, and promotes immunological tolerance.

Aliases: HAVCR2, CD366, KIM-3, TIMD3, Tim-3, TIMD-3, HAVcr-2

---

Molecular Weight: 33.4 kDa

---

Gene ID: 84868

---

HGNC: 84868

---

Pathways: [Regulation of Lipid Metabolism by PPARalpha](#), [Cancer Immune Checkpoints](#)

## Application Details

---

---

Application Notes: ELISA: 1:10000, WB: 1:500 - 1:2000, ICC: 1:200 - 1:1000, FCM: 1:200 - 1:400, IHC: N/A

---

Restrictions: For Research Use only

## Handling

---

---

Format: Liquid

---

Buffer: Purified antibody in PBS with 0.05 % sodium azide

---

Preservative: Sodium azide

---

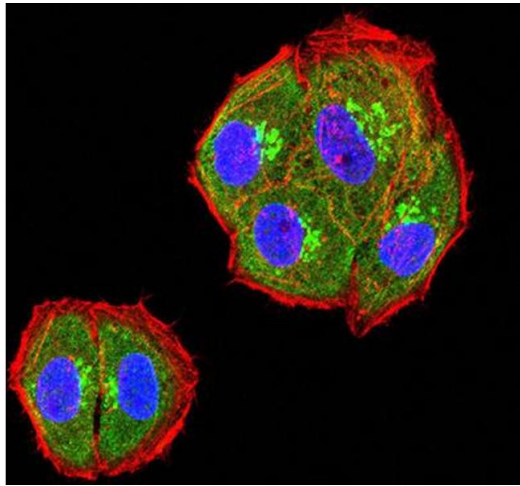
Precaution of Use: This product contains Sodium azide: a POISONOUS AND HAZARDOUS SUBSTANCE which should be handled by trained staff only.

---

Storage: 4 °C/-20 °C

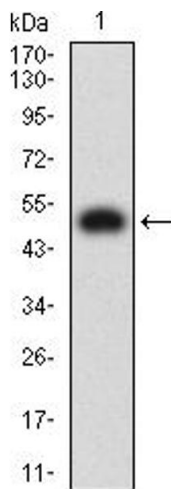
---

Storage Comment: 4°C, -20°C for long term storage



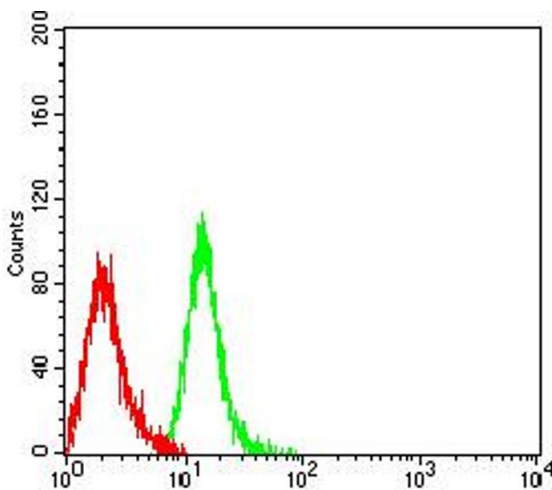
### Immunofluorescence

**Image 1.** Immunofluorescence analysis of HeLa cells using TIM3 mouse mAb (green). Blue: DRAQ5 fluorescent DNA dye. Red: Actin filaments have been labeled with Alexa Fluor- 555 phalloidin. Secondary antibody from Fisher (Cat#: 35503)



### Western Blotting

**Image 2.** Western blot analysis using TIM3 mAb against human TIM3 (AA: extra 22-202) recombinant protein. (Expected MW is 50 kDa)



### Flow Cytometry

**Image 3.** Flow cytometric analysis of Jurkat cells using TIM3 mouse mAb (green) and negative control (red).

Please check the [product details page](#) for more images. Overall 4 images are available for ABIN5611217.