

Datasheet for ABIN5611222  
**anti-ALDOA antibody (AA 9-145)**

## 5 Images

[Go to Product page](#)

## Overview

Quantity:	0.1 mg
Target:	ALDOA
Binding Specificity:	AA 9-145
Reactivity:	Human
Host:	Mouse
Clonality:	Monoclonal
Conjugate:	This ALDOA antibody is un-conjugated
Application:	Western Blotting (WB), ELISA, Immunohistochemistry (IHC), Immunocytochemistry (ICC), Flow Cytometry (FACS), Neutralization (Neut)

## Product Details

Immunogen:	Purified recombinant fragment of human ALDOA (AA: 9-145) expressed in E. coli.
Clone:	2H2B1
Isotype:	IgG1
Purification:	purified

## Target Details

Target:	ALDOA
Alternative Name:	ALDOA ( <a href="#">ALDOA Products</a> )
Background:	Description: The protein encoded by this gene, Aldolase A (fructose-bisphosphate aldolase), is a

## Target Details

glycolytic enzyme that catalyzes the reversible conversion of fructose-1,6-bisphosphate to glyceraldehyde 3-phosphate and dihydroxyacetone phosphate. Three aldolase isozymes (A, B, and C), encoded by three different genes, are differentially expressed during development. Aldolase A is found in the developing embryo and is produced in even greater amounts in adult muscle. Aldolase A expression is repressed in adult liver, kidney and intestine and similar to aldolase C levels in brain and other nervous tissue. Aldolase A deficiency has been associated with myopathy and hemolytic anemia. Alternative splicing and alternative promoter usage results in multiple transcript variants. Related pseudogenes have been identified on chromosomes 3 and 10.

Aliases: ALDA, GSD12, HEL-S-87p

Molecular Weight:	39.4 kDa
-------------------	----------

Gene ID:	226
----------	-----

HGNC:	226
-------	-----

Pathways:	<a href="#">Ribonucleoside Biosynthetic Process</a>
-----------	---

## Application Details

Application Notes:	ELISA: 1:10000, WB: 1:500 - 1:2000, ICC: 1:100 - 1:500, FCM: 1:200 - 1:400, IHC: N/A
--------------------	--

Restrictions:	For Research Use only
---------------	-----------------------

## Handling

Format:	Liquid
---------	--------

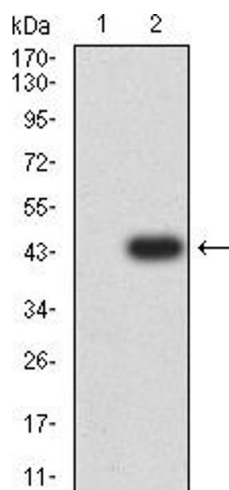
Buffer:	Purified antibody in PBS with 0.05 % sodium azide
---------	---

Preservative:	Sodium azide
---------------	--------------

Precaution of Use:	This product contains Sodium azide: a POISONOUS AND HAZARDOUS SUBSTANCE which should be handled by trained staff only.
--------------------	--

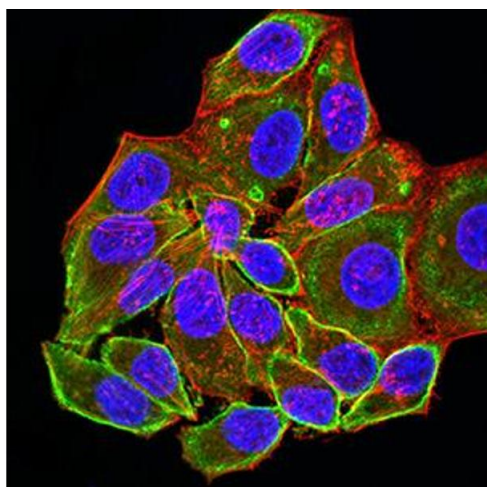
Storage:	4 °C/-20 °C
----------	-------------

Storage Comment:	4°C, -20°C for long term storage
------------------	----------------------------------



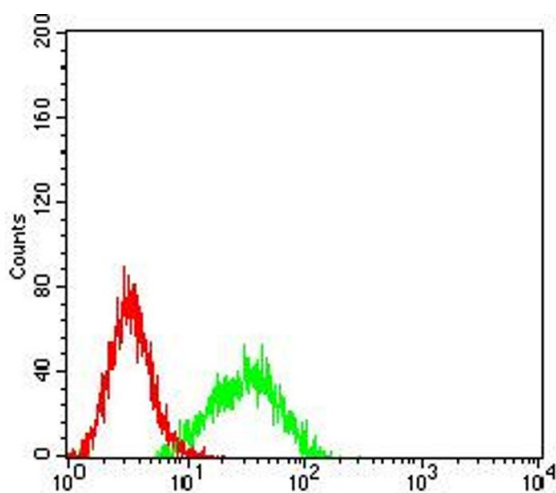
### Western Blotting

**Image 1.** Western blot analysis using ALDOA mAb against HEK293 (1) and ALDOA (AA: 9-145)-hlgGFc transfected HEK293 (2) cell lysate.



### Immunofluorescence

**Image 2.** Immunofluorescence analysis of HeLa cells using ALDOA mouse mAb (green). Blue: DRAQ5 fluorescent DNA dye. Red: Actin filaments have been labeled with Alexa Fluor-555 phalloidin. Secondary antibody from Fisher (Cat#: 35503)



### Flow Cytometry

**Image 3.** Flow cytometric analysis of K562 cells using ALDOA mouse mAb (green) and negative control (red).

Please check the [product details page](#) for more images. Overall 5 images are available for ABIN5611222.