

Datasheet for ABIN5611231  
**anti-APC1 antibody (AA 12-155)**



[Go to Product page](#)

5 Images

## Overview

Quantity:	100 µL
Target:	APC1 (ANAPC1)
Binding Specificity:	AA 12-155
Reactivity:	Human
Host:	Mouse
Clonality:	Monoclonal
Conjugate:	This APC1 antibody is un-conjugated
Application:	ELISA, Immunocytochemistry (ICC), Flow Cytometry (FACS)

## Product Details

Purpose:	ANAPC1 Antibody
Immunogen:	Purified recombinant fragment of human ANAPC1 (AA: 12-155) expressed in E. Coli.
Clone:	7G9B3
Isotype:	IgG1
Purification:	Purified antibody

## Target Details

Target:	APC1 (ANAPC1)
Alternative Name:	ANAPC1 ( <a href="#">ANAPC1 Products</a> )
Background:	Description: This gene encodes a subunit of the anaphase-promoting complex. This complex is

## Target Details

---

an E3 ubiquitin ligase that regulates progression through the metaphase to anaphase portion of the cell cycle by ubiquitinating proteins which targets them for degradation.

Aliases: APC1, MCPR, TSG24

---

Molecular Weight: 216kDa

---

Gene ID: 64682

---

HGNC: 64682

---

UniProt: [Q9H1A4](#)

---

## Application Details

---

Application Notes: ELISA: 1/10000  
FCM: 1/200 - 1/400  
ICC: 1/100 - 1/500

---

Restrictions: For Research Use only

---

## Handling

---

Format: Liquid

---

Buffer: Purified antibody in PBS with 0.05 % sodium azide.

---

Preservative: Sodium azide

---

Precaution of Use: This product contains Sodium azide: a POISONOUS AND HAZARDOUS SUBSTANCE which should be handled by trained staff only.

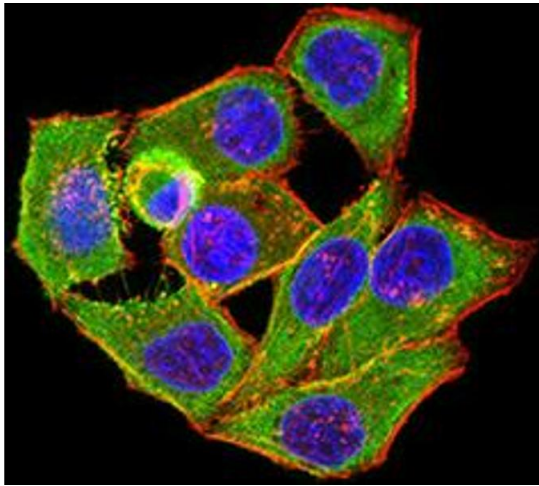
---

Storage: 4 °C,-20 °C

---

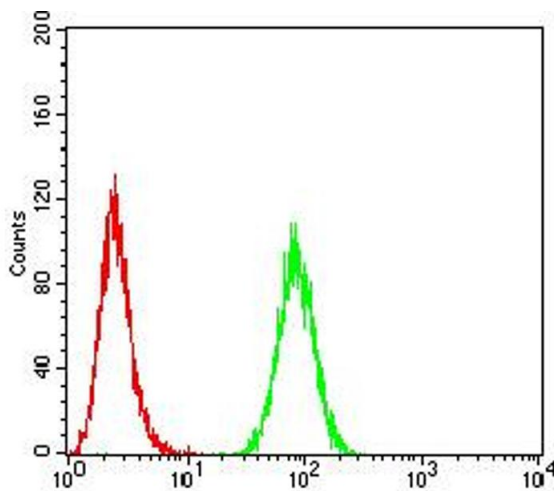
Storage Comment: Store at 4°C short term. Aliquot and store at -20°C long term. Avoid freeze/thaw cycles.

---



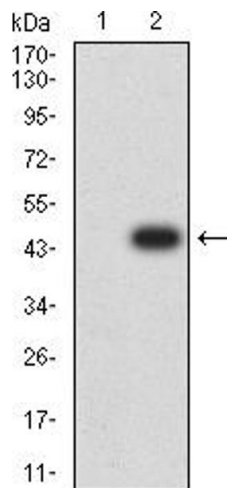
### Immunofluorescence

**Image 1.** Immunofluorescence analysis of HeLa cells using ANAPC1 mouse mAb (green). Blue: DRAQ5 fluorescent DNA dye. Red: Actin filaments have been labeled with Alexa Fluor-555 phalloidin. Secondary antibody from Fisher (Cat#: 35503)



### Flow Cytometry

**Image 2.** Flow cytometric analysis of HeLa cells using ANAPC1 mouse mAb (green) and negative control (red).



### Western Blotting

**Image 3.** Western blot analysis using ANAPC1 mAb against HEK293 (1) and ANAPC1 (AA: 12-155)-hlgGFc transfected HEK293 (2) cell lysate.

Please check the [product details page](#) for more images. Overall 5 images are available for ABIN5611231.