

Datasheet for ABIN5611232  
**anti-APC2 antibody (AA 2041-2181)**[Go to Product page](#)

## 7 Images

## Overview

Quantity:	0.1 mg
Target:	APC2
Binding Specificity:	AA 2041-2181
Reactivity:	Human
Host:	Mouse
Clonality:	Monoclonal
Application:	Western Blotting (WB), ELISA, Immunohistochemistry (IHC), Immunocytochemistry (ICC), Flow Cytometry (FACS)

## Product Details

Immunogen:	Purified recombinant fragment of human APC2 (AA: 2041-2181) expressed in E. coli.
Clone:	3A2G2
Isotype:	IgG1
Purification:	purified

## Target Details

Target:	APC2
Alternative Name:	APC2 ( <a href="#">APC2 Products</a> )
Background:	Description: This gene encodes a strongly conserved protein that has an N-terminal coiled-coil domain followed by an armadillo domain, five 20-amino acid repeats, and two SAMP domains. This protein promotes the assembly of a multiprotein complex that recruits and phosphorylates

## Target Details

the Wnt effector beta-catenin and targets beta-catenin for ubiquitylation and proteasomal degradation. This protein therefore plays a role in the reduction of cytoplasmic levels of beta-catenin which in turn reduces activation of Wnt target genes that play a pivotal role in the pathogenesis of various human cancers. The protein encoded by this gene is closely related to the adenomatous polyposis coli (APC) tumor-suppressor protein and has similar tumor-suppressor effects. This gene also plays a role in actin assembly, cell-cell adhesion, and microtubule network formation through its interaction with cytoskeletal proteins. This gene has its highest expression in the central nervous system and is involved in brain development through cytoskeletal regulation in neurons. Alternative splicing produces multiple transcript variants encoding distinct isoforms.

Aliases: APCL

Molecular Weight:	244 kDa
-------------------	---------

Gene ID:	10297
----------	-------

HGNC:	10297
-------	-------

Pathways:	<a href="#">WNT Signaling</a>
-----------	-------------------------------

## Application Details

Application Notes:	ELISA: 1:10000, WB: 1:500 - 1:2000, ICC: 1:200 - 1:1000, FCM: 1:200 - 1:400, IHC: 1:200 - 1:1000
--------------------	--

Restrictions:	For Research Use only
---------------	-----------------------

## Handling

Format:	Liquid
---------	--------

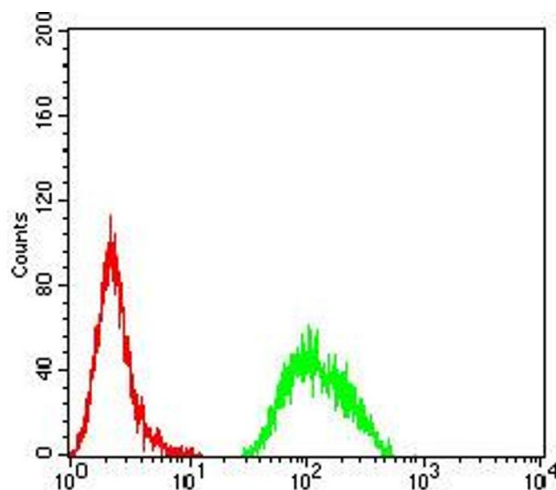
Buffer:	Purified antibody in PBS with 0.05 % sodium azide
---------	---

Preservative:	Sodium azide
---------------	--------------

Precaution of Use:	This product contains Sodium azide: a POISONOUS AND HAZARDOUS SUBSTANCE which should be handled by trained staff only.
--------------------	--

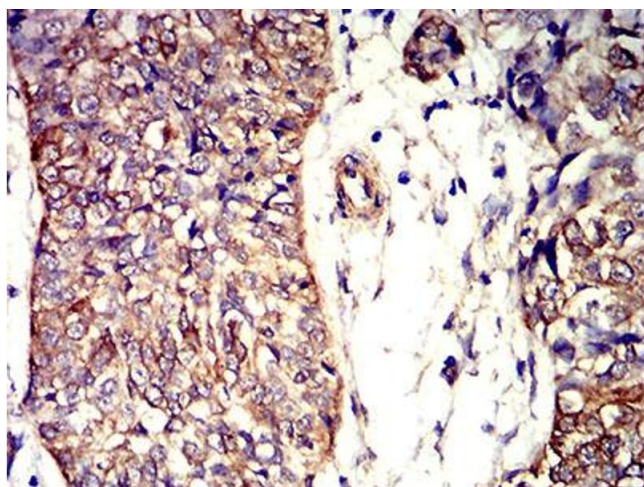
Storage:	4 °C/-20 °C
----------	-------------

Storage Comment:	4°C, -20°C for long term storage
------------------	----------------------------------



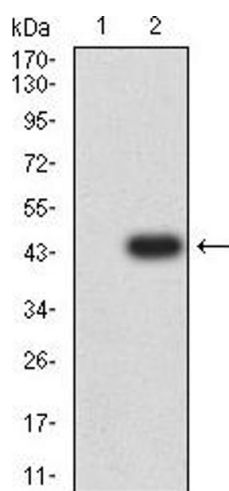
### Flow Cytometry

**Image 1.** Flow cytometric analysis of HeLa cells using APC2 mouse mAb (green) and negative control (red).



### Immunohistochemistry

**Image 2.** Immunohistochemical analysis of paraffin-embedded bladder cancer tissues using APC2 mouse mAb with DAB staining.



### Western Blotting

**Image 3.** Western blot analysis using APC2 mAb against HEK293 (1) and APC2 (AA: 2041-2181)-hlgGfc transfected HEK293 (2) cell lysate.

Please check the [product details page](#) for more images. Overall 7 images are available for ABIN5611232.