

Datasheet for ABIN5611238
anti-RUNX1 antibody (AA 237-337)[Go to Product page](#)

4 Images

Overview

Quantity:	0.1 mg
Target:	RUNX1
Binding Specificity:	AA 237-337
Reactivity:	Human
Host:	Mouse
Clonality:	Monoclonal
Application:	Western Blotting (WB), ELISA, Immunohistochemistry (IHC), Flow Cytometry (FACS), Immunocytochemistry (ICC), Neutralization (Neut)

Product Details

Immunogen:	Purified recombinant fragment of human RUNX1 (AA: 237-337) expressed in E. coli.
Clone:	6C12A5
Isotype:	IgG1
Purification:	purified

Target Details

Target:	RUNX1
Alternative Name:	RUNX1 (RUNX1 Products)
Background:	Description: Core binding factor (CBF) is a heterodimeric transcription factor that binds to the core element of many enhancers and promoters. The protein encoded by this gene represents the alpha subunit of CBF and is thought to be involved in the development of normal

Target Details

hematopoiesis. Chromosomal translocations involving this gene are well-documented and have been associated with several types of leukemia. Three transcript variants encoding different isoforms have been found for this gene.

Aliases: AML1, CBFA2, EVI-1, AMLCR1, PEBP2aB, CBF2alpha, AML1-EVI-1, PEBP2alpha

Molecular Weight:	48.7 kDa
-------------------	----------

Gene ID:	861
----------	-----

HGNC:	861
-------	-----

Application Details

Application Notes:	ELISA: 1:10000, WB: 1:500 - 1:2000, ICC: N/A, FCM: 1:200 - 1:400, IHC: N/A
--------------------	--

Restrictions:	For Research Use only
---------------	-----------------------

Handling

Format:	Liquid
---------	--------

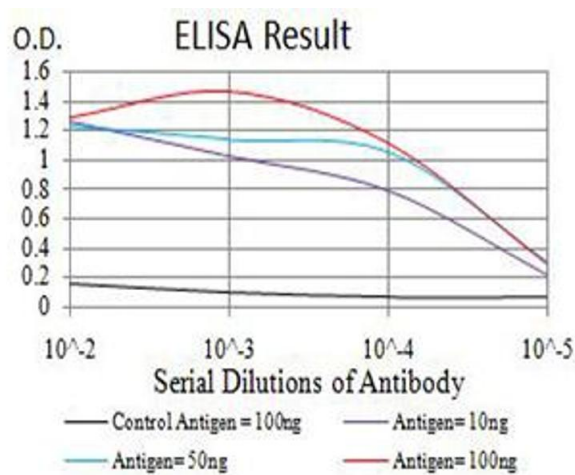
Buffer:	Purified antibody in PBS with 0.05 % sodium azide
---------	---

Preservative:	Sodium azide
---------------	--------------

Precaution of Use:	This product contains Sodium azide: a POISONOUS AND HAZARDOUS SUBSTANCE which should be handled by trained staff only.
--------------------	--

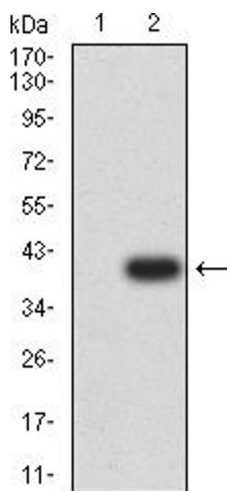
Storage:	4 °C/-20 °C
----------	-------------

Storage Comment:	4°C, -20°C for long term storage
------------------	----------------------------------



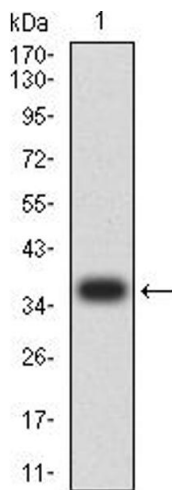
ELISA

Image 1. Black line: Control Antigen (100 ng), Purple line: Antigen (10 ng), Blue line: Antigen (50 ng), Red line: Antigen (100 ng)



Western Blotting

Image 2. Western blot analysis using RUNX1 mAb against HEK293 (1) and RUNX1 (AA: 237-337)-hlgGFc transfected HEK293 (2) cell lysate.



Western Blotting

Image 3. Western blot analysis using RUNX1 mAb against human RUNX1 (AA: 237-337) recombinant protein. (Expected MW is 36.9 kDa)

Please check the [product details page](#) for more images. Overall 4 images are available for ABIN5611238.