

Datasheet for ABIN5611241  
**anti-BCL2L2 antibody (AA 6-118)**

## 9 Images

[Go to Product page](#)

## Overview

Quantity:	0.1 mg
Target:	BCL2L2
Binding Specificity:	AA 6-118
Reactivity:	Human
Host:	Mouse
Clonality:	Monoclonal
Conjugate:	This BCL2L2 antibody is un-conjugated
Application:	Western Blotting (WB), Immunohistochemistry (IHC), ELISA, Immunocytochemistry (ICC), Flow Cytometry (FACS)

## Product Details

Immunogen:	Purified recombinant fragment of human BCL2L2 (AA: 6-118) expressed in E. coli.
Clone:	4G12E6
Isotype:	IgG2a
Purification:	purified

## Target Details

Target:	BCL2L2
Alternative Name:	BCL2L2 ( <a href="#">BCL2L2 Products</a> )
Background:	Description: This gene encodes a member of the BCL-2 protein family. The proteins of this

## Target Details

family form hetero- or homodimers and act as anti- and pro-apoptotic regulators. Expression of this gene in cells has been shown to contribute to reduced cell apoptosis under cytotoxic conditions. Studies of the related gene in mice indicated a role in the survival of NGF- and BDNF-dependent neurons. Mutation and knockout studies of the mouse gene demonstrated an essential role in adult spermatogenesis. Alternative splicing results in multiple transcript variants. Read-through transcription also exists between this gene and the neighboring downstream PABPN1 (poly(A) binding protein, nuclear 1) gene.

Aliases: BCLW, BCL-W, PPP1R51, BCL2-L-2

Molecular Weight:	20.7 kDa
-------------------	----------

Gene ID:	599
----------	-----

HGNC:	599
-------	-----

## Application Details

Application Notes:	ELISA: 1:10000, WB: 1:500 - 1:2000, ICC: 1:200 - 1:1000, FCM: 1:200 - 1:400, IHC: 1:200 - 1:1000
--------------------	--

Restrictions:	For Research Use only
---------------	-----------------------

## Handling

Format:	Liquid
---------	--------

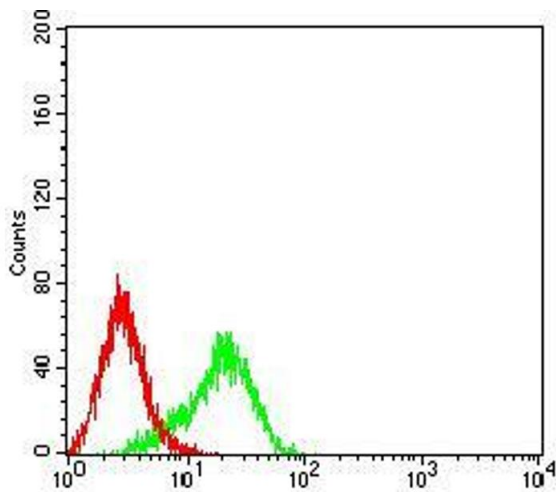
Buffer:	Purified antibody in PBS with 0.05 % sodium azide
---------	---

Preservative:	Sodium azide
---------------	--------------

Precaution of Use:	This product contains Sodium azide: a POISONOUS AND HAZARDOUS SUBSTANCE which should be handled by trained staff only.
--------------------	--

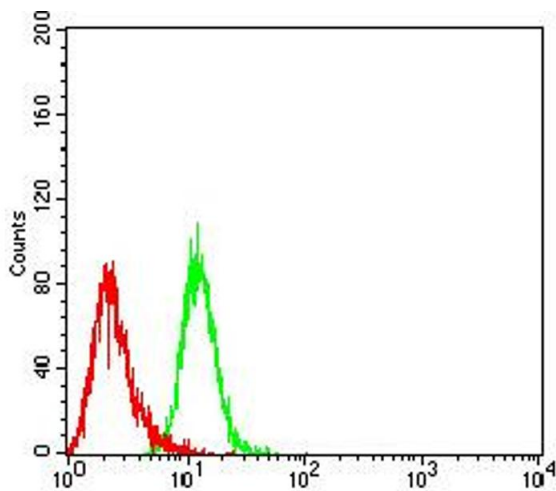
Storage:	4 °C/-20 °C
----------	-------------

Storage Comment:	4°C, -20°C for long term storage
------------------	----------------------------------



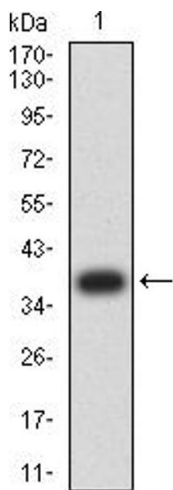
Flow Cytometry

**Image 1.** Flow cytometric analysis of K562 cells using BCL2L2 mouse mAb (green) and negative control (red).



Flow Cytometry

**Image 2.** Flow cytometric analysis of HeLa cells using BCL2L2 mouse mAb (green) and negative control (red).



Western Blotting

**Image 3.** Western blot analysis using BCL2L2 mAb against human BCL2L2 (AA: 6-118) recombinant protein. (Expected MW is 38.2 kDa)

Please check the [product details page](#) for more images. Overall 9 images are available for ABIN5611241.