

Datasheet for ABIN5611245  
**anti-BTLA antibody (AA 31-157)**



[Go to Product page](#)

4 Images

## Overview

Quantity:	100 µL
Target:	BTLA
Binding Specificity:	AA 31-157
Reactivity:	Human
Host:	Mouse
Clonality:	Monoclonal
Conjugate:	This BTLA antibody is un-conjugated
Application:	ELISA, Immunocytochemistry (ICC)

## Product Details

Purpose:	BTLA Antibody
Immunogen:	Purified recombinant fragment of human BTLA (AA: 31-157) expressed in E. Coli.
Clone:	7B8B4
Isotype:	IgG1
Purification:	Purified antibody

## Target Details

Target:	BTLA
Alternative Name:	<a href="#">BTLA (BTLA Products)</a>
Background:	Description: This gene encodes a member of the immunoglobulin superfamily. The encoded

## Target Details

---

protein contains a single immunoglobulin (Ig) domain and is a receptor that relays inhibitory signals to suppress the immune response. Alternative splicing results in multiple transcript variants. Polymorphisms in this gene have been associated with an increased risk of rheumatoid arthritis.

Aliases: BTLA1, CD272

---

Molecular Weight: 32.8kDa

---

Gene ID: 151888

---

HGNC: 151888

---

Pathways: [Cancer Immune Checkpoints](#)

## Application Details

---

Application Notes: ELISA: 1/10000  
ICC: 1/100 - 1/500

---

Restrictions: For Research Use only

## Handling

---

Format: Liquid

---

Buffer: Purified antibody in PBS with 0.05 % sodium azide.

---

Preservative: Sodium azide

---

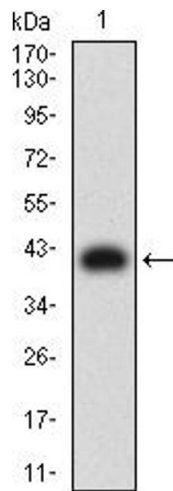
Precaution of Use: This product contains Sodium azide: a POISONOUS AND HAZARDOUS SUBSTANCE which should be handled by trained staff only.

---

Storage: 4 °C, -20 °C

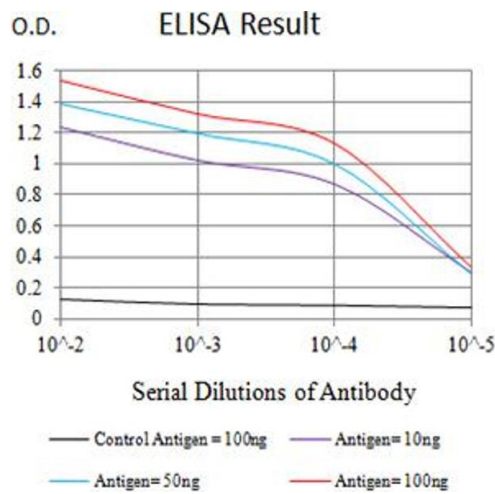
---

Storage Comment: Store at 4°C short term. Aliquot and store at -20°C long term. Avoid freeze/thaw cycles.



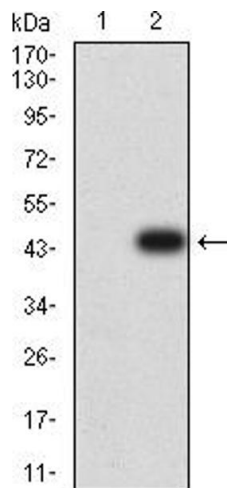
### Western Blotting

**Image 1.** Western blot analysis using BTLA mAb against human BTLA (AA: extra 31-157) recombinant protein. (Expected MW is 41 kDa)



### ELISA

**Image 2.** Black line: Control Antigen (100 ng), Purple line: Antigen (10 ng), Blue line: Antigen (50 ng), Red line: Antigen (100 ng)



### Western Blotting

**Image 3.** Western blot analysis using BTLA mAb against HEK293 (1) and BTLA (AA: extra 31-157)-hlgGfc transfected HEK293 (2) cell lysate.

Please check the [product details page](#) for more images. Overall 4 images are available for ABIN5611245.