

Datasheet for ABIN5611249  
**anti-BAG1 antibody (AA 219-346)**



[Go to Product page](#)

5 Images

## Overview

Quantity:	100 µL
Target:	BAG1
Binding Specificity:	AA 219-346
Reactivity:	Human
Host:	Mouse
Clonality:	Monoclonal
Conjugate:	This BAG1 antibody is un-conjugated
Application:	ELISA, Flow Cytometry (FACS), Immunocytochemistry (ICC)

## Product Details

Purpose:	BAG1 Antibody
Immunogen:	Purified recombinant fragment of human BAG1 (AA: 219-346) expressed in E. Coli.
Clone:	1E4B5
Isotype:	IgG1
Purification:	Purified antibody

## Target Details

Target:	BAG1
Alternative Name:	BAG1 ( <a href="#">BAG1 Products</a> )
Background:	Description: The oncogene BCL2 is a membrane protein that blocks a step in a pathway leading

## Target Details

---

to apoptosis or programmed cell death. The protein encoded by this gene binds to BCL2 and is referred to as BCL2-associated athanogene. It enhances the anti-apoptotic effects of BCL2 and represents a link between growth factor receptors and anti-apoptotic mechanisms. Multiple protein isoforms are encoded by this mRNA through the use of a non-AUG (CUG) initiation codon, and three alternative downstream AUG initiation codons. A related pseudogene has been defined on chromosome X.

Aliases: HAP, BAG-1, RAP46

---

Molecular Weight: 38.8kDa

---

Gene ID: 573

---

HGNC: 573

---

UniProt: [Q99933](#)

## Application Details

---

Application Notes: ELISA: 1/10000  
FCM: 1/200 - 1/400  
ICC: 1/100 - 1/500

---

Restrictions: For Research Use only

## Handling

---

Format: Liquid

---

Buffer: Purified antibody in PBS with 0.05 % sodium azide.

---

Preservative: Sodium azide

---

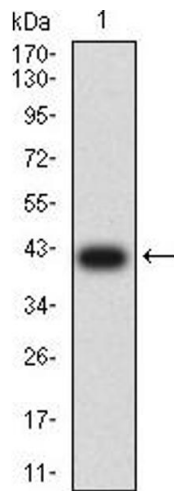
Precaution of Use: This product contains Sodium azide: a POISONOUS AND HAZARDOUS SUBSTANCE which should be handled by trained staff only.

---

Storage: 4 °C, -20 °C

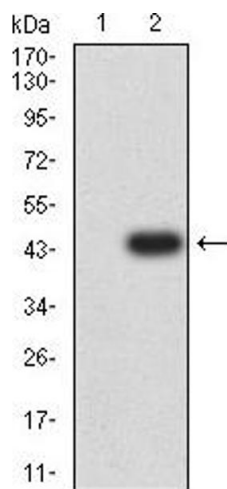
---

Storage Comment: Store at 4°C short term. Aliquot and store at -20°C long term. Avoid freeze/thaw cycles.



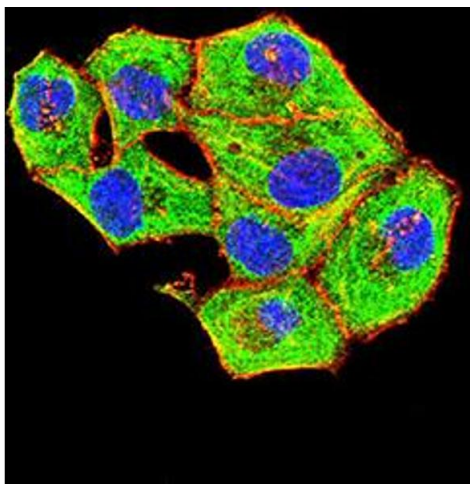
#### Western Blotting

**Image 1.** Western blot analysis using BAG1 mAb against human BAG1 (AA: 219-346) recombinant protein. (Expected MW is 40.6 kDa)



#### Western Blotting

**Image 2.** Western blot analysis using BAG1 mAb against HEK293 (1) and BAG1 (AA: 219-346)-hlgGfC transfected HEK293 (2) cell lysate.



#### Immunofluorescence

**Image 3.** Immunofluorescence analysis of HeLa cells using BAG1 mouse mAb (green). Blue: DRAQ5 fluorescent DNA dye. Red: Actin filaments have been labeled with Alexa Fluor-555 phalloidin. Secondary antibody from Fisher (Cat#: 35503)

Please check the [product details page](#) for more images. Overall 5 images are available for ABIN5611249.