

Datasheet for ABIN5611253
anti-BCL6 antibody (AA 147-276)

5 Images

[Go to Product page](#)

Overview

Quantity:	0.1 mg
Target:	BCL6
Binding Specificity:	AA 147-276
Reactivity:	Human
Host:	Mouse
Clonality:	Monoclonal
Conjugate:	This BCL6 antibody is un-conjugated
Application:	Western Blotting (WB), Flow Cytometry (FACS), Immunohistochemistry (IHC), ELISA, Immunocytochemistry (ICC), Neutralization (Neut)

Product Details

Immunogen:	Purified recombinant fragment of human BCL6 (AA: 147-276) expressed in E. coli.
Clone:	2G1B6
Isotype:	IgG1
Purification:	purified

Target Details

Target:	BCL6
Alternative Name:	BCL6 (BCL6 Products)
Background:	Description: The protein encoded by this gene is a zinc finger transcription factor and contains

Target Details

an N-terminal POZ domain. This protein acts as a sequence-specific repressor of transcription, and has been shown to modulate the transcription of STAT-dependent IL-4 responses of B cells. This protein can interact with a variety of POZ-containing proteins that function as transcription corepressors. This gene is found to be frequently translocated and hypermutated in diffuse large-cell lymphoma (DLCL), and may be involved in the pathogenesis of DLCL. Alternatively spliced transcript variants encoding different protein isoforms have been found for this gene.

Aliases: BCL5, LAZ3, BCL6A, ZNF51, ZBTB27

Molecular Weight: 78.8 kDa

Gene ID: 604

HGNC: 604

Pathways: [Chromatin Binding](#), [Regulation of Leukocyte Mediated Immunity](#), [Production of Molecular Mediator of Immune Response](#), [Protein targeting to Nucleus](#)

Application Details

Application Notes: ELISA: 1:10000, WB: 1:500 - 1:2000, ICC: 1:200 - 1:1000, FCM: 1:200 - 1:400, IHC: N/A

Restrictions: For Research Use only

Handling

Format: Liquid

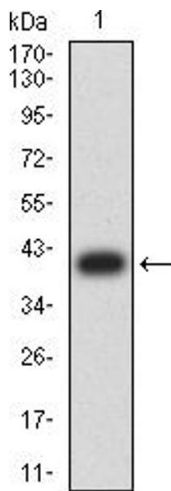
Buffer: Purified antibody in PBS with 0.05 % sodium azide

Preservative: Sodium azide

Precaution of Use: This product contains Sodium azide: a POISONOUS AND HAZARDOUS SUBSTANCE which should be handled by trained staff only.

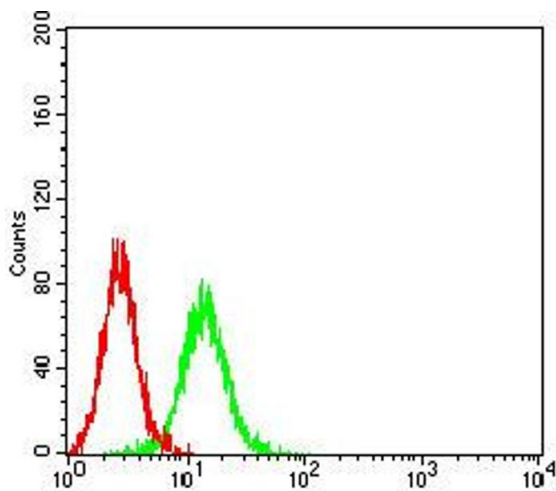
Storage: 4 °C/-20 °C

Storage Comment: 4°C, -20°C for long term storage



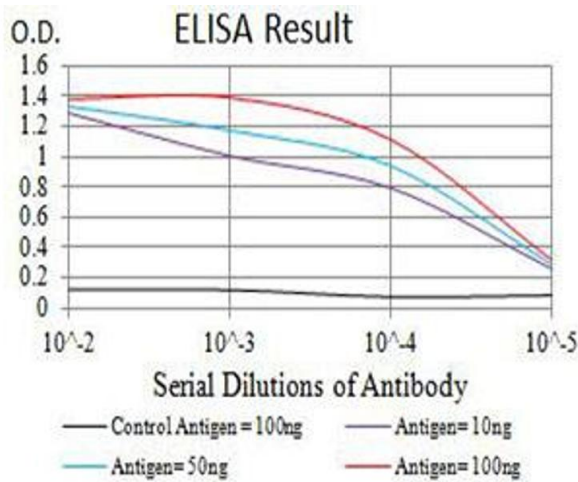
Western Blotting

Image 1. Western blot analysis using BCL6 mAb against human BCL6 (AA: 147-276) recombinant protein. (Expected MW is 40.5 kDa)



Flow Cytometry

Image 2. Flow cytometric analysis of K562 cells using BCL6 mouse mAb (green) and negative control (red).



ELISA

Image 3. Black line: Control Antigen (100 ng), Purple line: Antigen (10 ng), Blue line: Antigen (50 ng), Red line: Antigen (100 ng)

Please check the [product details page](#) for more images. Overall 5 images are available for ABIN5611253.